

500 800

SOUTHWEST QUADRANT

800 *Pls #1*

STANTOWN

850

250

MERIDIAN

900

US ROUTE 31

950

1000

400

200

25

1000

1050

ELM

150

1075

1080

1100

1100

1150

500

1200

MERIDIAN

50

100

STATE ROAD 18

EAST

100

1300

1300

1350

MEADOW  
DEVER

200

1350

200

150

100

Main 50

550

100

1400

200

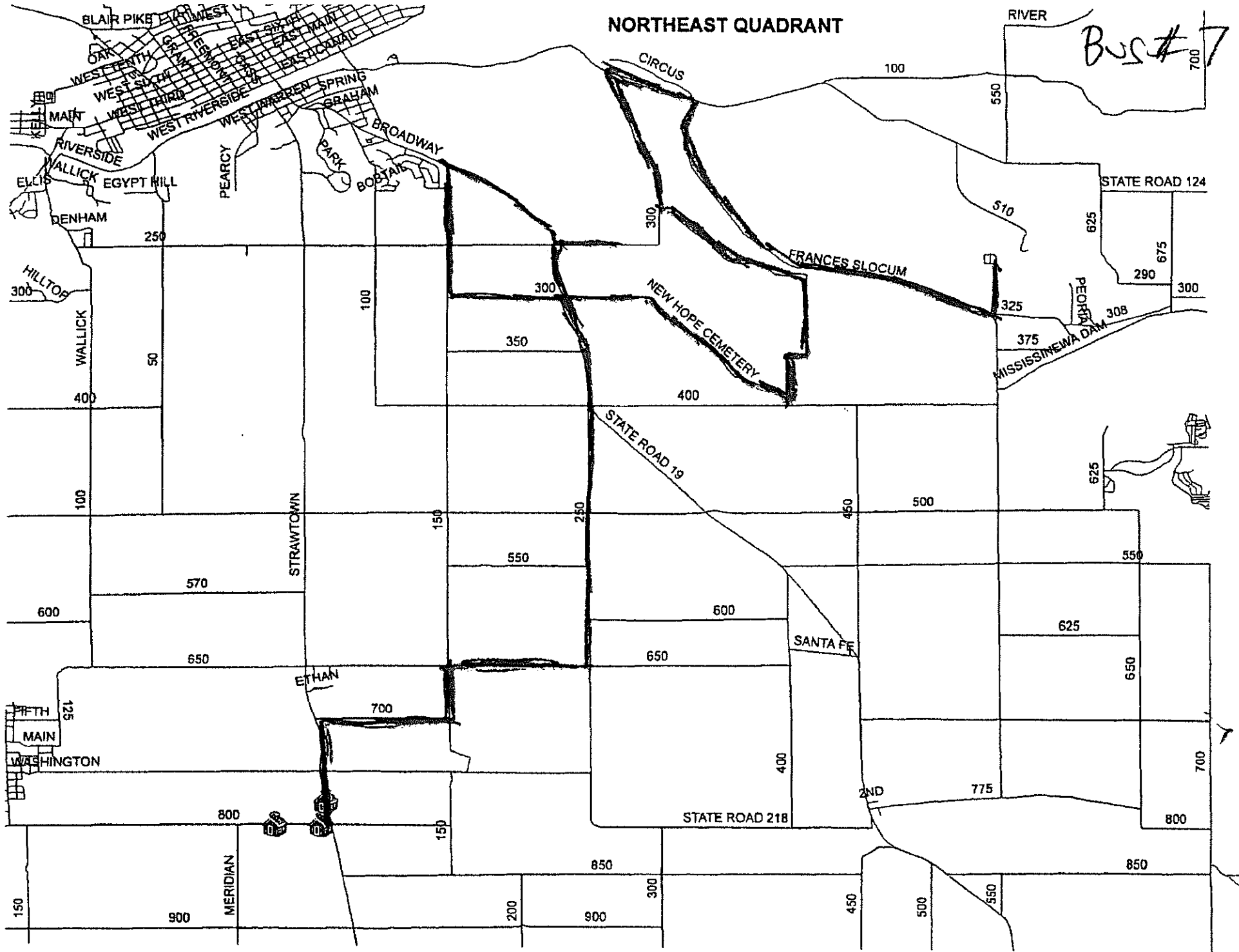
300

1400



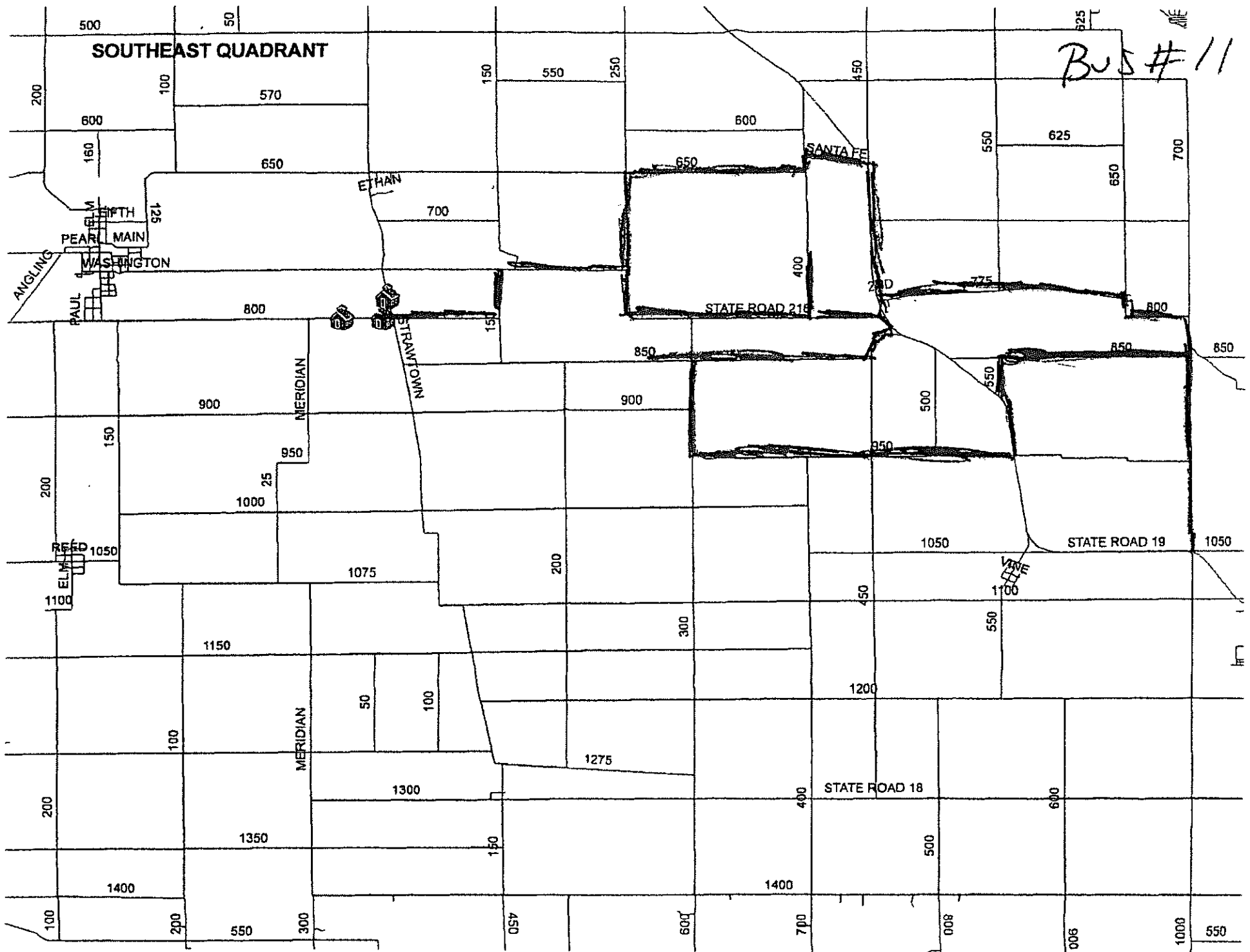
NORTHEAST QUADRANT

Bus # 7



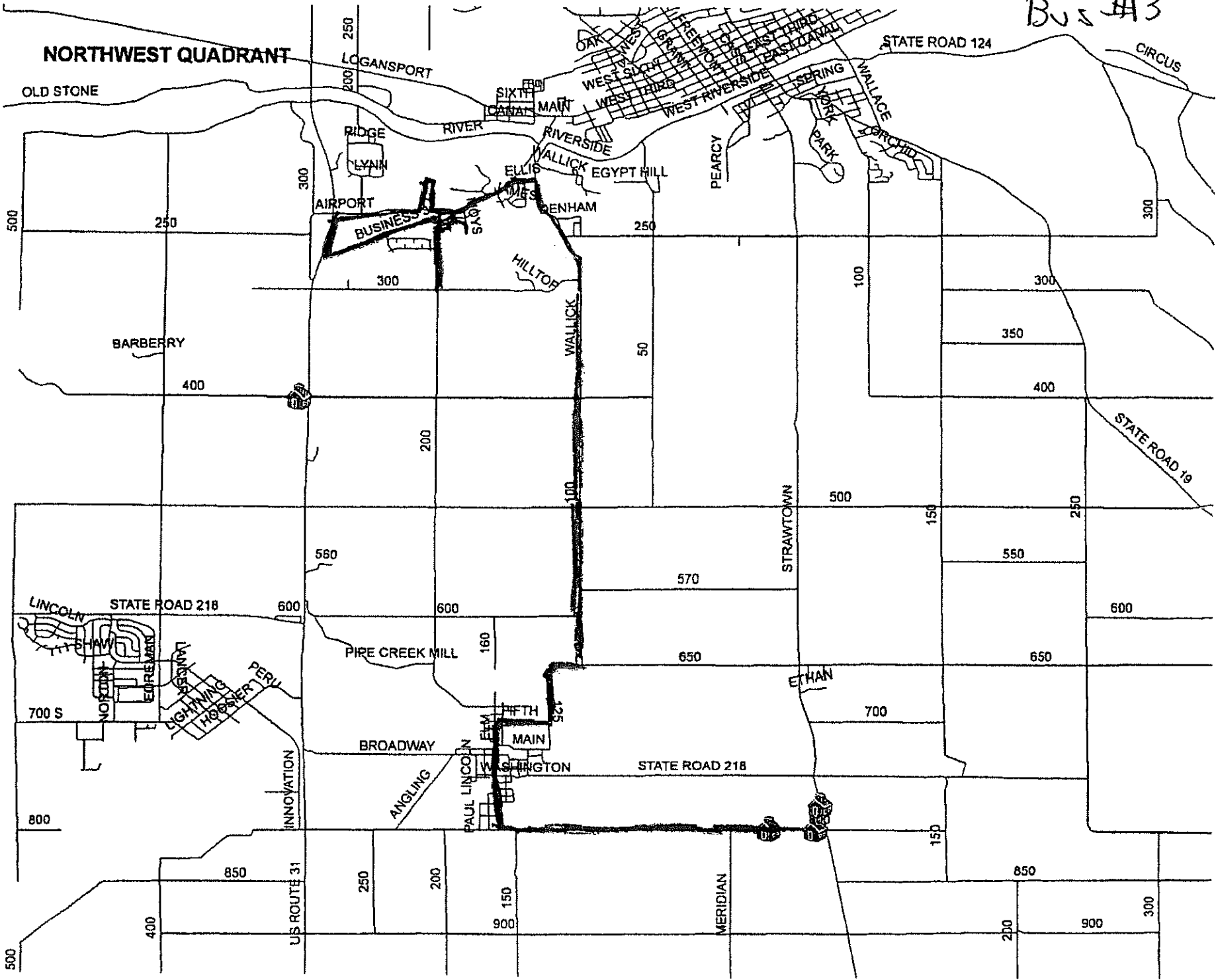








Bus #13



**NORTHWEST QUADRANT**

OLD STONE

LOGANSPORT

STATE ROAD 124

CIRCUS

RIDGE  
LYNN

AIRPORT

BUSINESS

HILLTOP

BARBERRY

WALLICK

WALLICK

WALLICK

WALLICK

WALLICK

WALLICK

WALLICK

WALLICK

WALLICK

WALLICK

WALLICK

WALLICK

WALLICK

WALLICK

WALLICK

WALLICK

WALLICK

WALLICK

WALLICK

WALLICK

SIXTH

SEVENTH

EIGHTH

NINTH

TENTH

ELEVENTH

TWELFTH

THIRTEENTH

FOURTEENTH

FIFTEENTH

SIXTEENTH

SEVENTEENTH

EIGHTEENTH

NINETEENTH

TWENTIETH

TWENTY-FIRST

TWENTY-SECOND

TWENTY-THIRD

TWENTY-FOURTH

TWENTY-FIFTH

TWENTY-SIXTH

TWENTY-SEVENTH

TWENTY-EIGHTH

TWENTY-NINTH

THIRTIETH

THIRTY-FIRST

THIRTY-SECOND

THIRTY-THIRD

THIRTY-FOURTH

THIRTY-FIFTH

THIRTY-SIXTH

THIRTY-SEVENTH

THIRTY-EIGHTH

THIRTY-NINTH

FOURTIETH

FOURTY-FIRST

FOURTY-SECOND

FOURTY-THIRD

FOURTY-FOURTH

FOURTY-FIFTH

FOURTY-SIXTH

FOURTY-SEVENTH

FOURTY-EIGHTH

FOURTY-NINTH

FIFTIETH

FIFTY-FIRST

FIFTY-SECOND

FIFTY-THIRD

FIFTY-FOURTH

FIFTY-FIFTH

FIFTY-SIXTH

FIFTY-SEVENTH

FIFTY-EIGHTH

FIFTY-NINTH

SIXTIETH

SIXTY-FIRST

SIXTY-SECOND

SIXTY-THIRD

SIXTY-FOURTH

SIXTY-FIFTH

SIXTY-SIXTH

SIXTY-SEVENTH

SIXTY-EIGHTH

SIXTY-NINTH

SEVENTIETH

SEVENTY-FIRST

SEVENTY-SECOND

SEVENTY-THIRD

SEVENTY-FOURTH

SEVENTY-FIFTH

SEVENTY-SIXTH

SEVENTY-SEVENTH

SEVENTY-EIGHTH

SEVENTY-NINTH

EIGHTIETH

EIGHTY-FIRST

EIGHTY-SECOND

EIGHTY-THIRD

EIGHTY-FOURTH

EIGHTY-FIFTH

EIGHTY-SIXTH

EIGHTY-SEVENTH

EIGHTY-EIGHTH

EIGHTY-NINTH

NINETY

NINETY-FIRST

NINETY-SECOND

NINETY-THIRD

NINETY-FOURTH

NINETY-FIFTH

NINETY-SIXTH

NINETY-SEVENTH

NINETY-EIGHTH

NINETY-NINTH

HUNDRETH

HUNDRETH

HUNDRETH

HUNDRETH

HUNDRETH

HUNDRETH

HUNDRETH

HUNDRETH

HUNDRETH

HUNDRETH

HUNDRETH

HUNDRETH

HUNDRETH

HUNDRETH

HUNDRETH

HUNDRETH

HUNDRETH

HUNDRETH

HUNDRETH

HUNDRETH

HUNDRETH

HUNDRETH

HUNDRETH

HUNDRETH

HUNDRETH

HUNDRETH

HUNDRETH

HUNDRETH

HUNDRETH

HUNDRETH

HUNDRETH

HUNDRETH

HUNDRETH

HUNDRETH

HUNDRETH

HUNDRETH

HUNDRETH

HUNDRETH

HUNDRETH

HUNDRETH

HUNDRETH

HUNDRETH

HUNDRETH

HUNDRETH

HUNDRETH

HUNDRETH

HUNDRETH

HUNDRETH

HUNDRETH

HUNDRETH

HUNDRETH

HUNDRETH

HUNDRETH

HUNDRETH

HUNDRETH

HUNDRETH

HUNDRETH

HUNDRETH

HUNDRETH

HUNDRETH

HUNDRETH

HUNDRETH

HUNDRETH

HUNDRETH

HUNDRETH

HUNDRETH

HUNDRETH

HUNDRETH

HUNDRETH

HUNDRETH

HUNDRETH

HUNDRETH

HUNDRETH

HUNDRETH

HUNDRETH

HUNDRETH

HUNDRETH

HUNDRETH

HUNDRETH

HUNDRETH

HUNDRETH

HUNDRETH

HUNDRETH

HUNDRETH

HUNDRETH

HUNDRETH

HUNDRETH

HUNDRETH

HUNDRETH

HUNDRETH

HUNDRETH

HUNDRETH

HUNDRETH

HUNDRETH

HUNDRETH

HUNDRETH

HUNDRETH

HUNDRETH

HUNDRETH

HUNDRETH

HUNDRETH

HUNDRETH

HUNDRETH

HUNDRETH

HUNDRETH

HUNDRETH

HUNDRETH

HUNDRETH

HUNDRETH

HUNDRETH

HUNDRETH

HUNDRETH

HUNDRETH

HUNDRETH

HUNDRETH

HUNDRETH

HUNDRETH

HUNDRETH

HUNDRETH

HUNDRETH

HUNDRETH

HUNDRETH

HUNDRETH

HUNDRETH

HUNDRETH

HUNDRETH

HUNDRETH

HUNDRETH

HUNDRETH

HUNDRETH

HUNDRETH

HUNDRETH

HUNDRETH

HUNDRETH

HUNDRETH

HUNDRETH

HUNDRETH

HUNDRETH

HUNDRETH

HUNDRETH

HUNDRETH

HUNDRETH

HUNDRETH

HUNDRETH

HUNDRETH

HUNDRETH

HUNDRETH

HUNDRETH

HUNDRETH

HUNDRETH

HUNDRETH

HUNDRETH

HUNDRETH

HUNDRETH

HUNDRETH

HUNDRETH

HUNDRETH

HUNDRETH

HUNDRETH

HUNDRETH

HUNDRETH

HUNDRETH

HUNDRETH

HUNDRETH

HUNDRETH

HUNDRETH

HUNDRETH

HUNDRETH

HUNDRETH

HUNDRETH

HUNDRETH

HUNDRETH

HUNDRETH

HUNDRETH

HUNDRETH

HUNDRETH

HUNDRETH

HUNDRETH

HUNDRETH

HUNDRETH

HUNDRETH

HUNDRETH

HUNDRETH

HUNDRETH

HUNDRETH

HUNDRETH

HUNDRETH

HUNDRETH

HUNDRETH

HUNDRETH

HUNDRETH

HUNDRETH

HUNDRETH

HUNDRETH

HUNDRETH

HUNDRETH

HUNDRETH

HUNDRETH

HUNDRETH

HUNDRETH

HUNDRETH

HUNDRETH

HUNDRETH

HUNDRETH

HUNDRETH

HUNDRETH

HUNDRETH

HUNDRETH



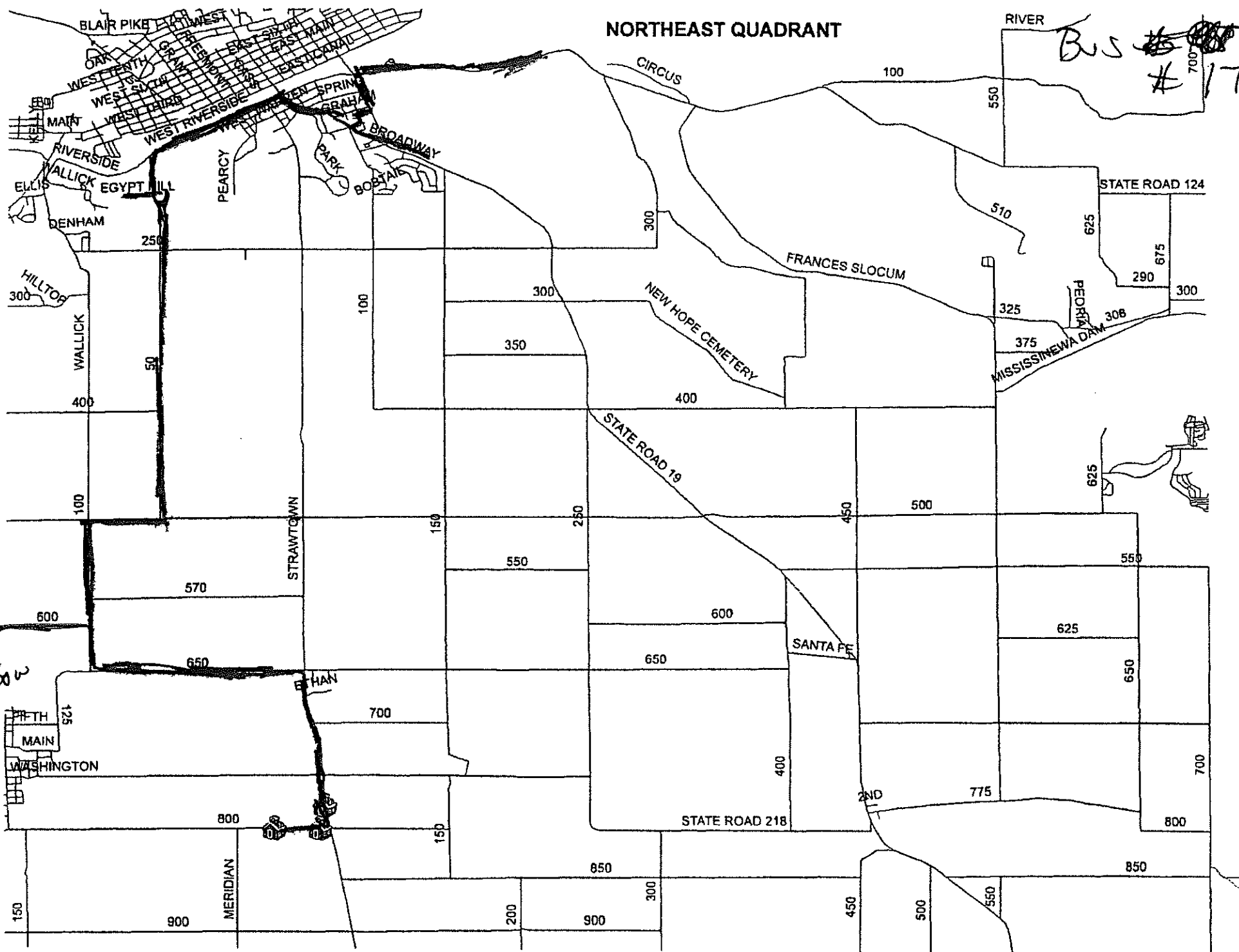


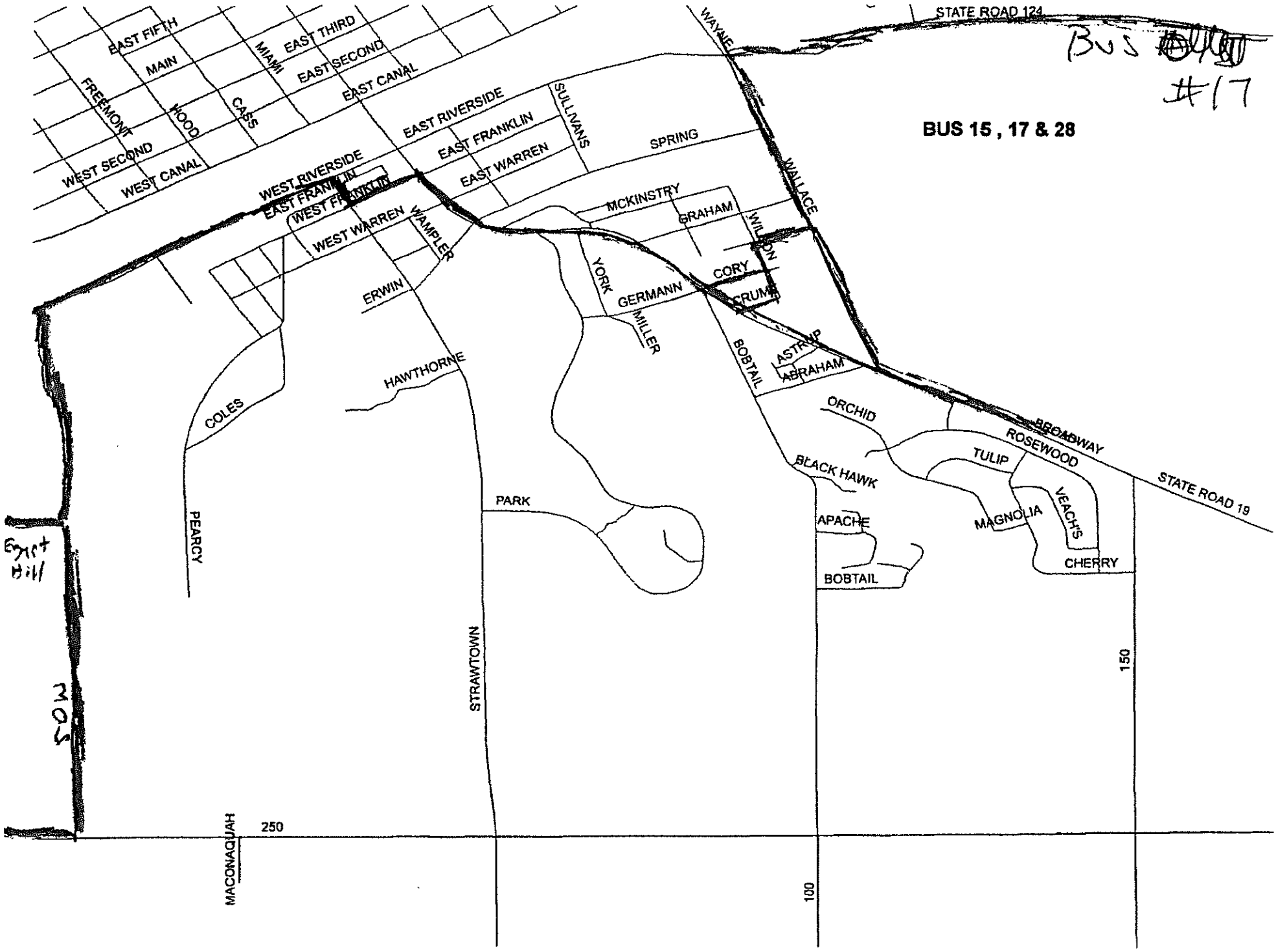


NORTHEAST QUADRANT

RIVER

Bus # ~~15~~ 17





Bus ~~15~~  
#17

BUS 15, 17 & 28

East Hill

MOS

PEARCY

MACONACUAH

250

STRAWTOWN

PARK

100

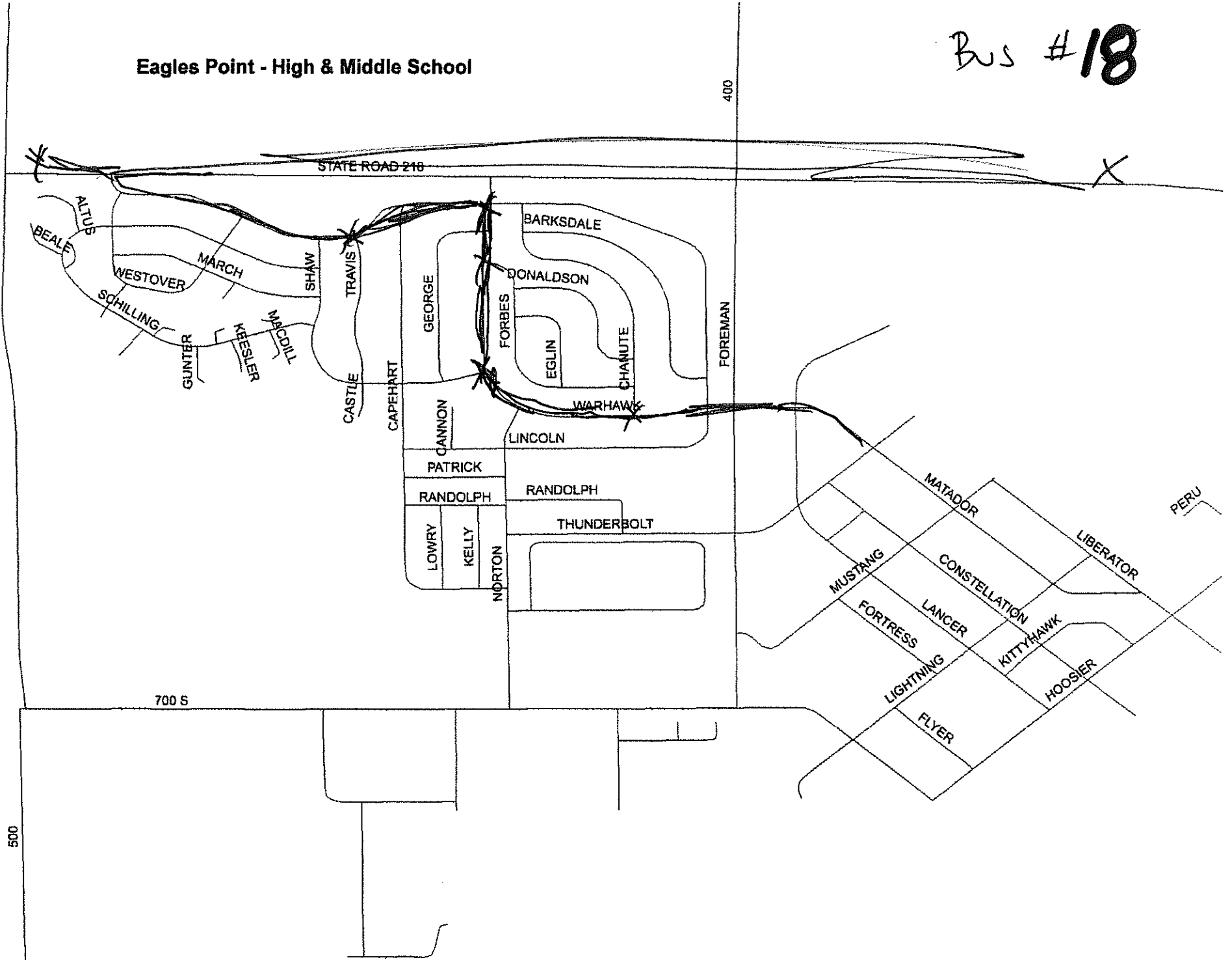
150

STATE ROAD 18

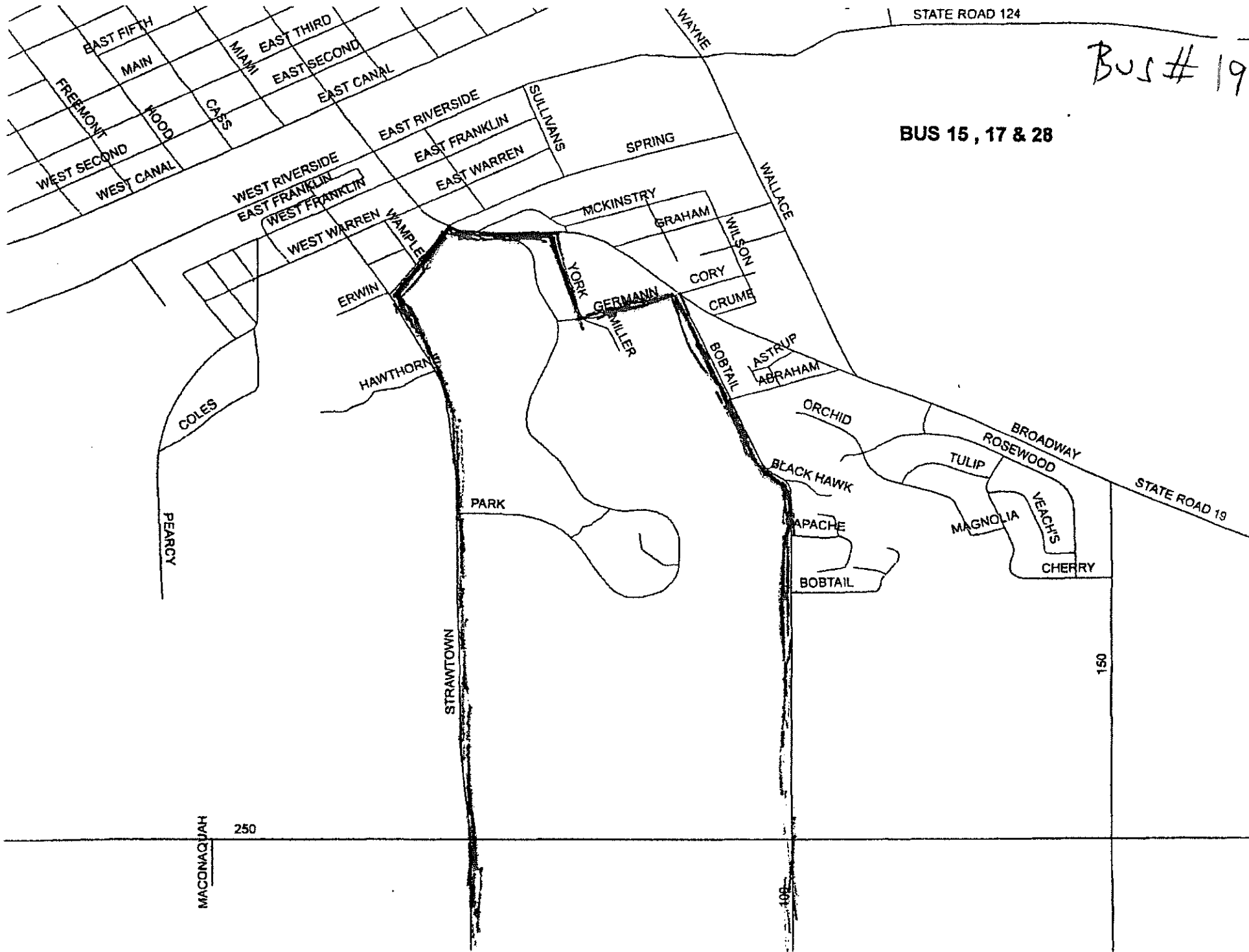
STATE ROAD 124

Eagles Point - High & Middle School

Bus #18







Bus # 19

BUS 15, 17 & 28

MACONAJAH 250

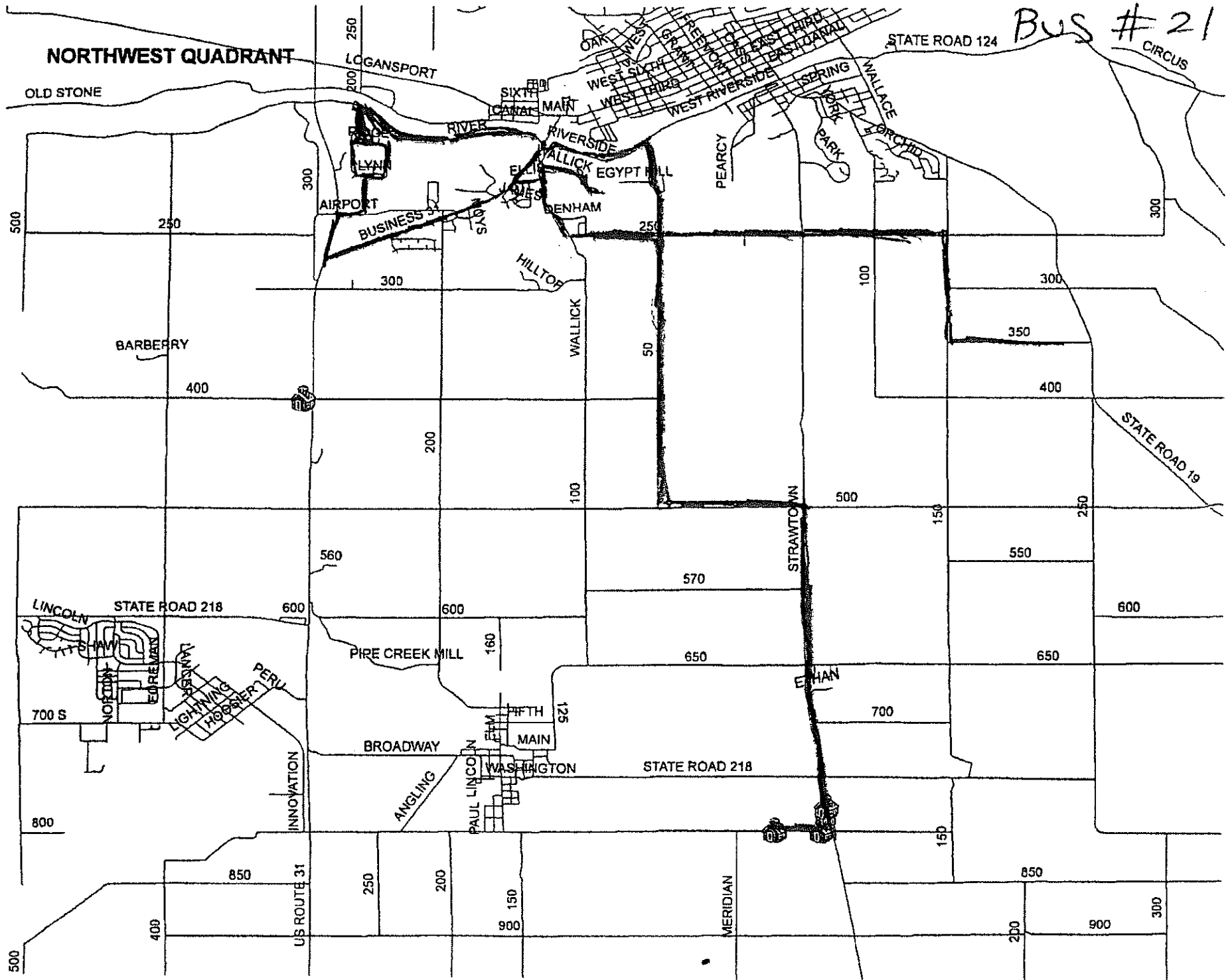
150

100



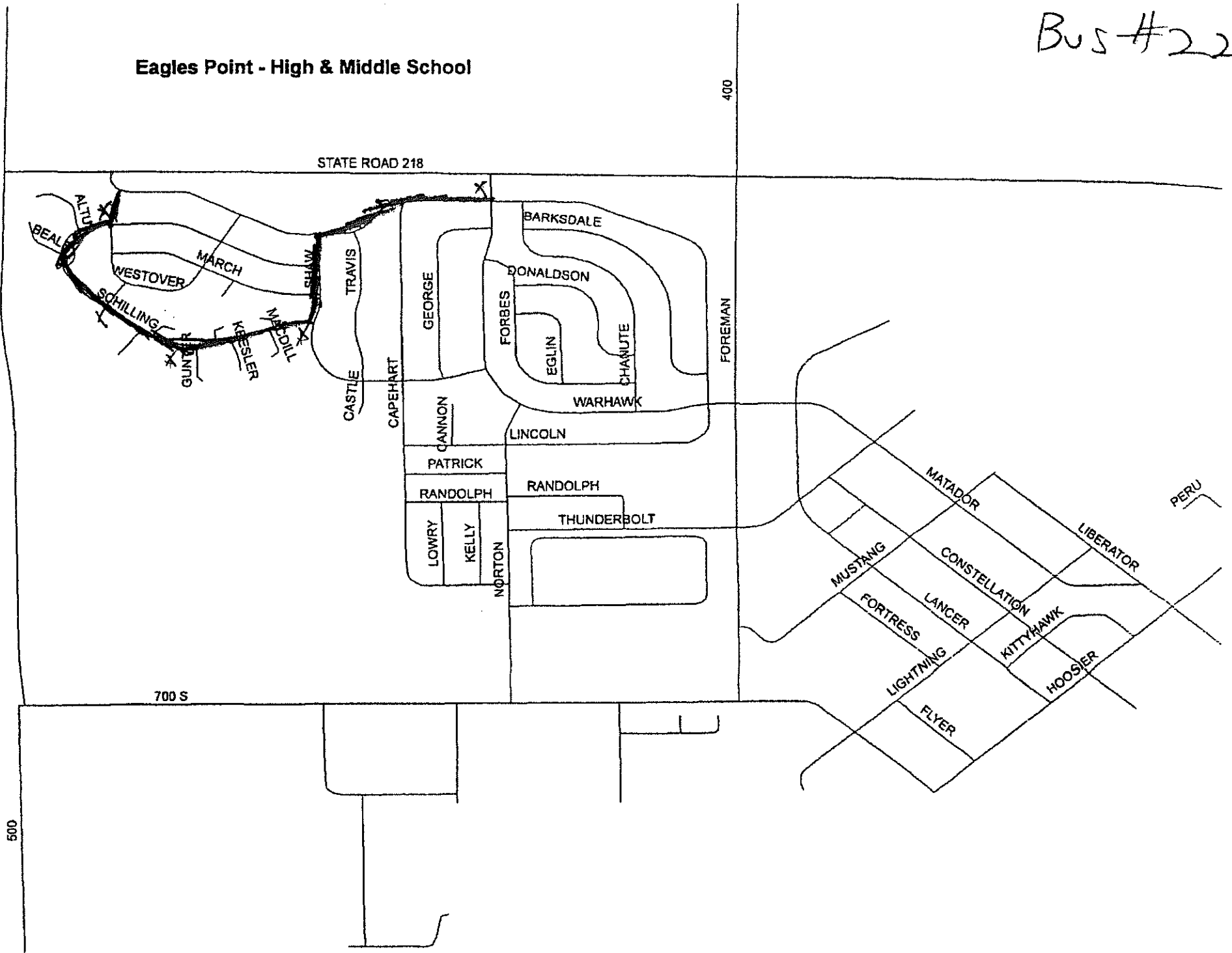


Bus # 21



Eagles Point - High & Middle School

Bus #22

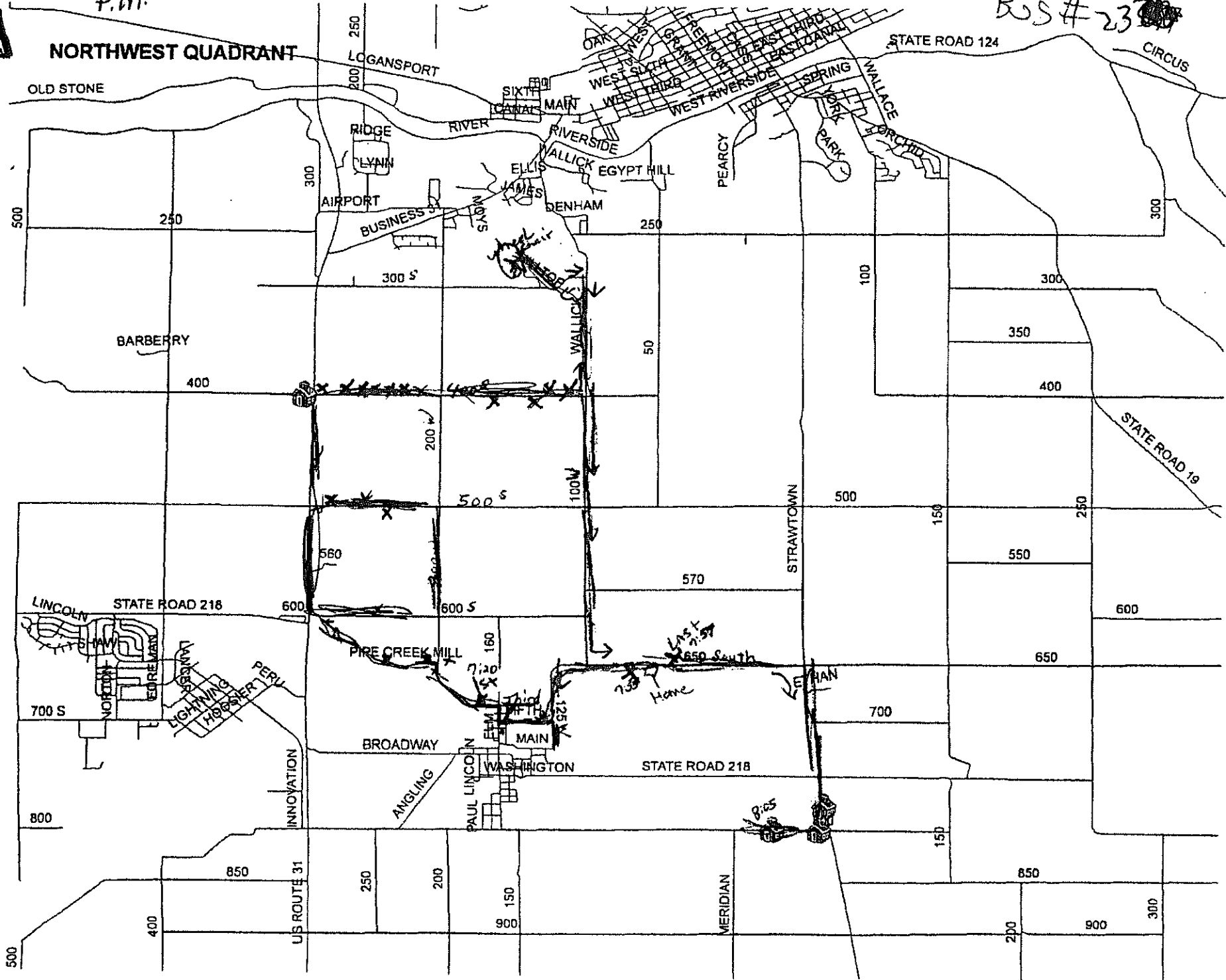




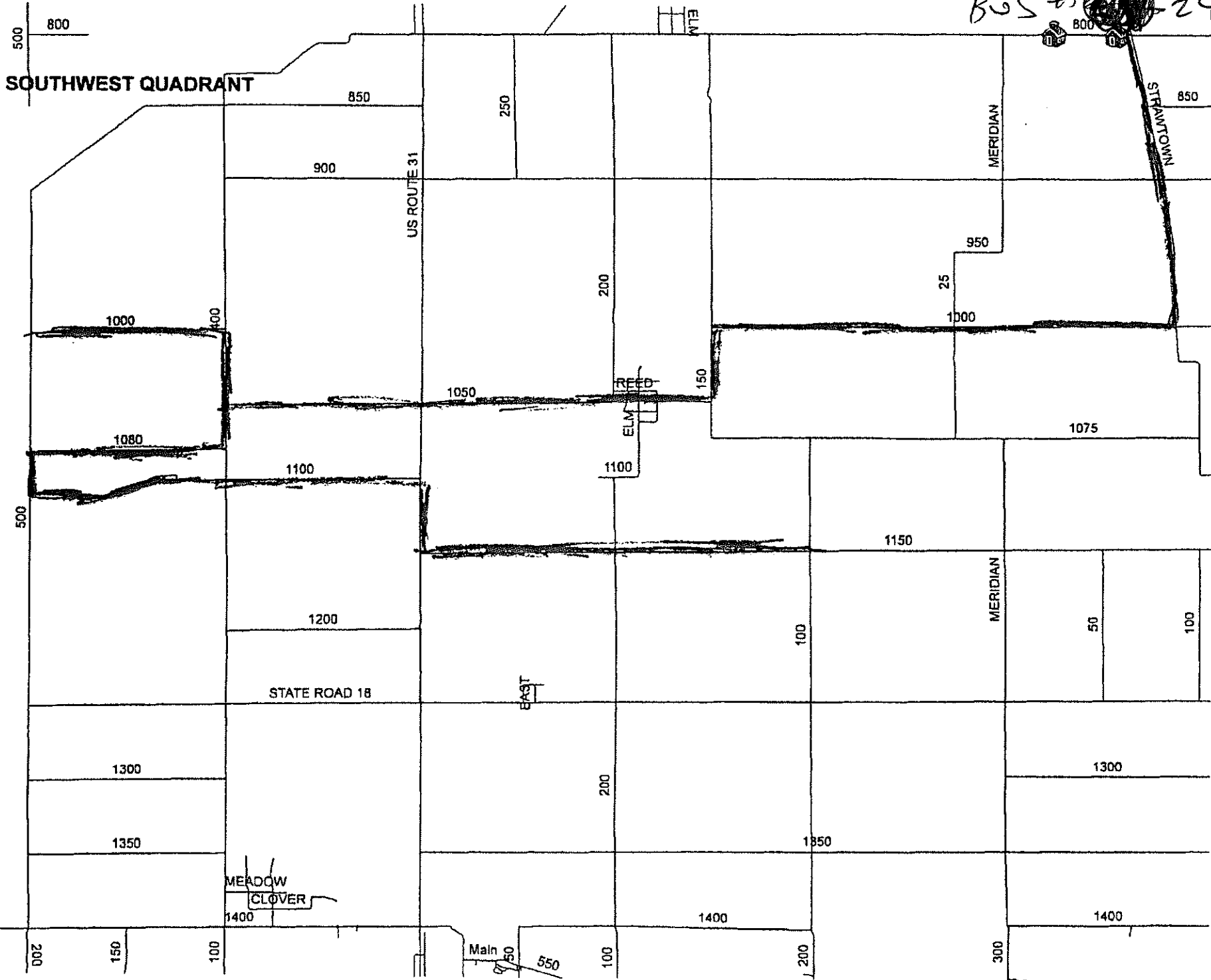
P. 17.

505 # 23

# NORTHWEST QUADRANT



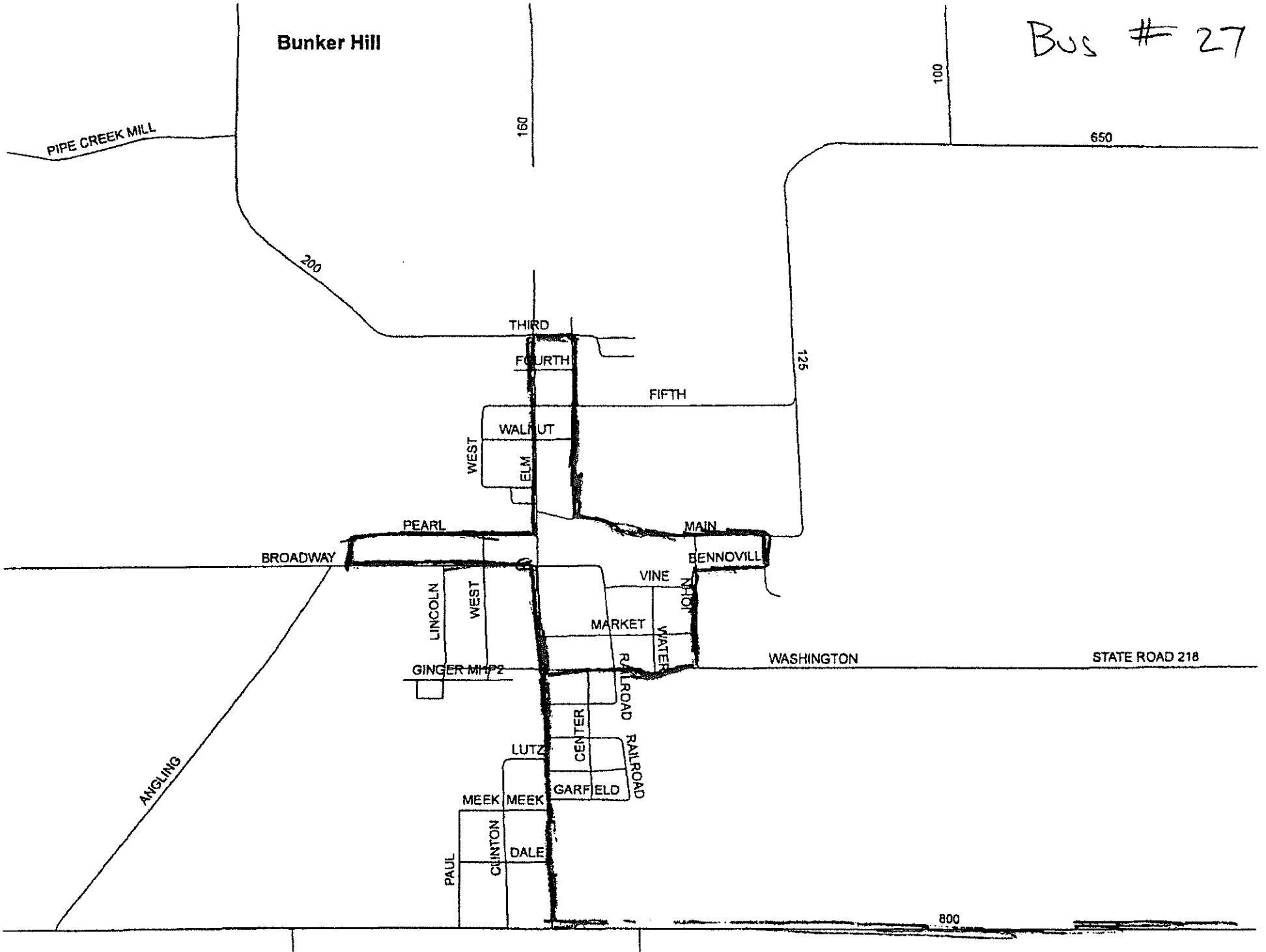
BOS # 24





Bus # 27

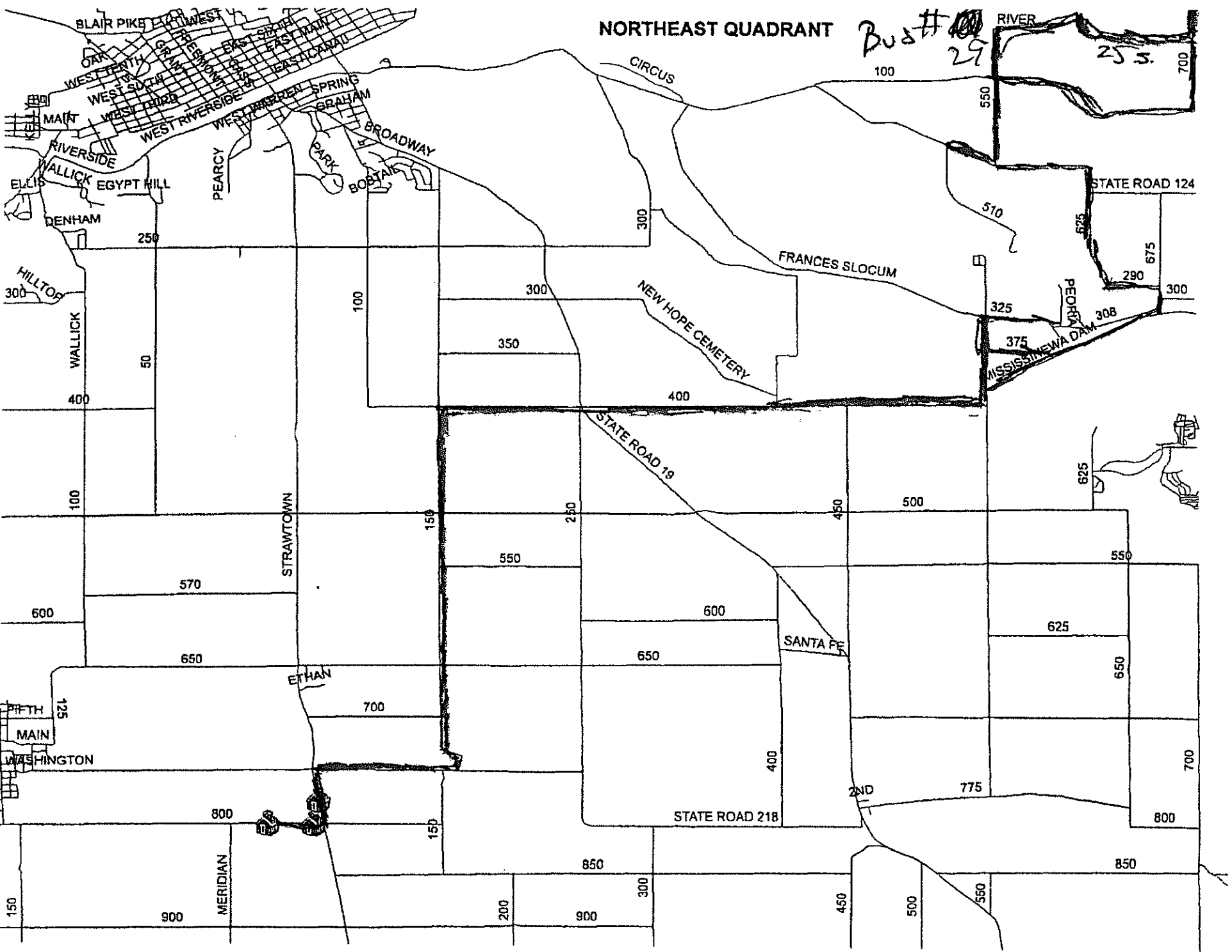
Bunker Hill



NORTHEAST QUADRANT

Bu # 29

RIVER



253

STATE ROAD 124

FRANCES SLOCUM

NEW HOPE CEMETERY

STATE ROAD 18

SANTA FE

STATE ROAD 218

MISSISSINAWA DAM

625

625

650

700

800

850

900

1000

1100

1200

1300

1400

1500

1600

1700

1800

1900

2000

2100

2200

2300

2400

2500

2600

2700

2800

2900

3000

3100

3200

3300

3400

3500

3600

3700

3800

3900

4000

4100

4200

4300

4400

4500

4600

4700

4800

4900

5000

5100

5200

5300

5400

5500

5600

5700

5800

5900

6000

6100

6200

6300

6400

6500

6600

6700

6800

6900

7000

7100

7200

7300

7400

7500

7600

7700

7800

7900

8000

8100

8200

8300

8400

8500

8600

8700

8800

8900

9000

9100

9200

9300

9400

9500

9600

9700

9800

9900

10000

10100

10200

10300

10400

10500

10600

10700

10800

10900

11000

11100

11200

11300

11400

11500

11600

11700

11800

11900

12000

12100

12200

12300

12400

12500

12600

12700

12800

12900

13000

13100

13200

13300

13400

13500

13600

13700

13800

13900

14000

14100

14200

14300

14400

14500

14600

14700

14800

14900

15000

15100

15200

15300

15400

15500

15600

15700

15800

15900

16000

16100

16200

16300

16400

16500

16600

16700

16800

16900

17000

17100

17200

17300

17400

17500

17600

17700

17800

17900

18000

18100

18200

18300

18400

18500

18600

18700

18800

18900

19000

19100

19200

19300

19400

19500

19600

19700

19800

19900

20000

20100

20200

20300

20400

20500

20600

20700

20800

20900

21000

21100

21200

21300

21400

21500

21600

21700

21800

21900

22000

22100

22200

22300

22400

22500

22600

22700

22800

22900

23000

23100

23200

23300

23400

23500

23600

23700

23800

23900

24000

24100

24200

24300

24400

24500

24600

24700

24800

24900

25000

25100

25200

25300

25400

25500

25600

25700

25800

25900

26000

26100

26200

26300

26400

26500

26600

26700

26800

26900

27000

27100

27200

27300

27400

27500

27600

27700

27800

27900

28000

28100

28200

28300

28400

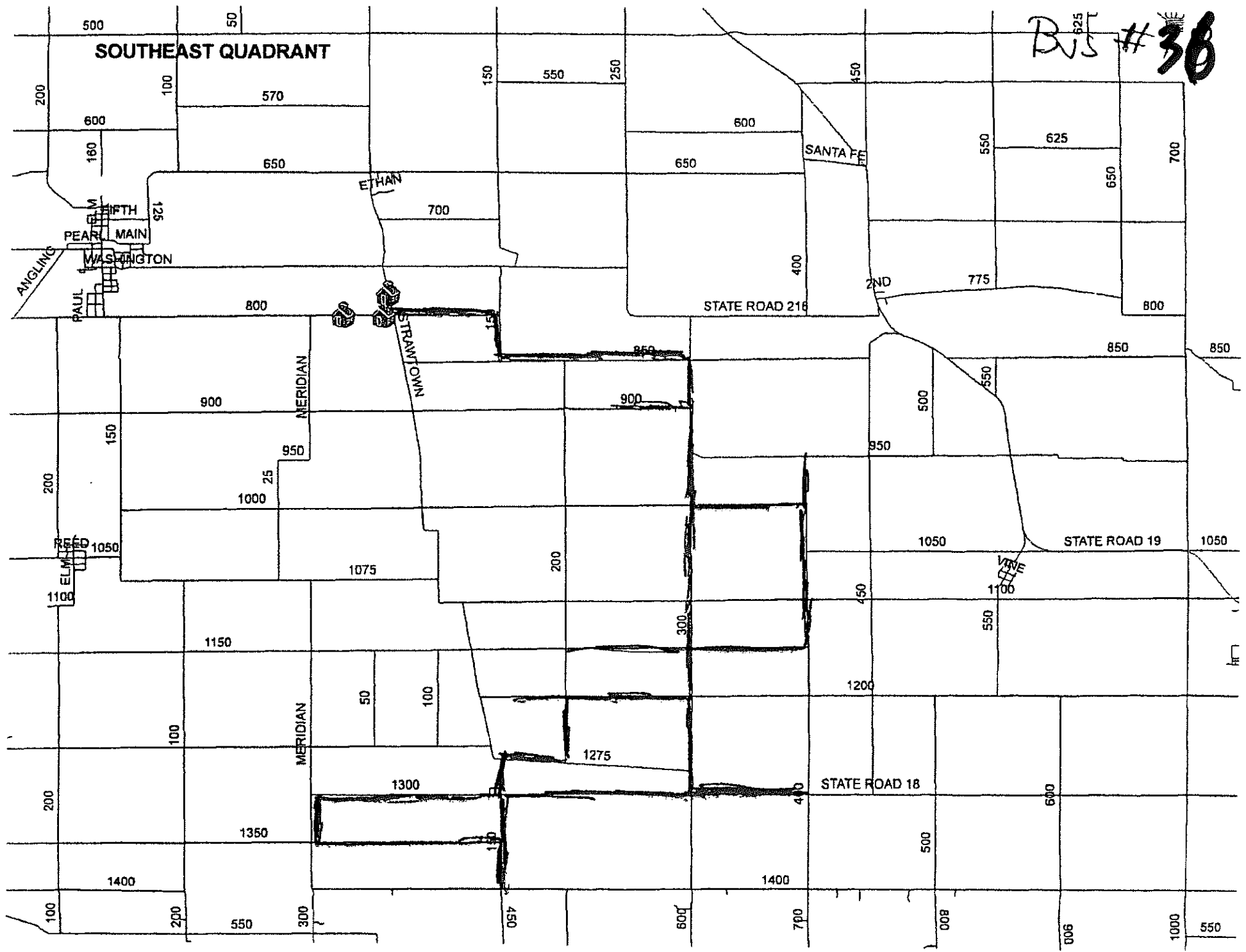
28500

28600

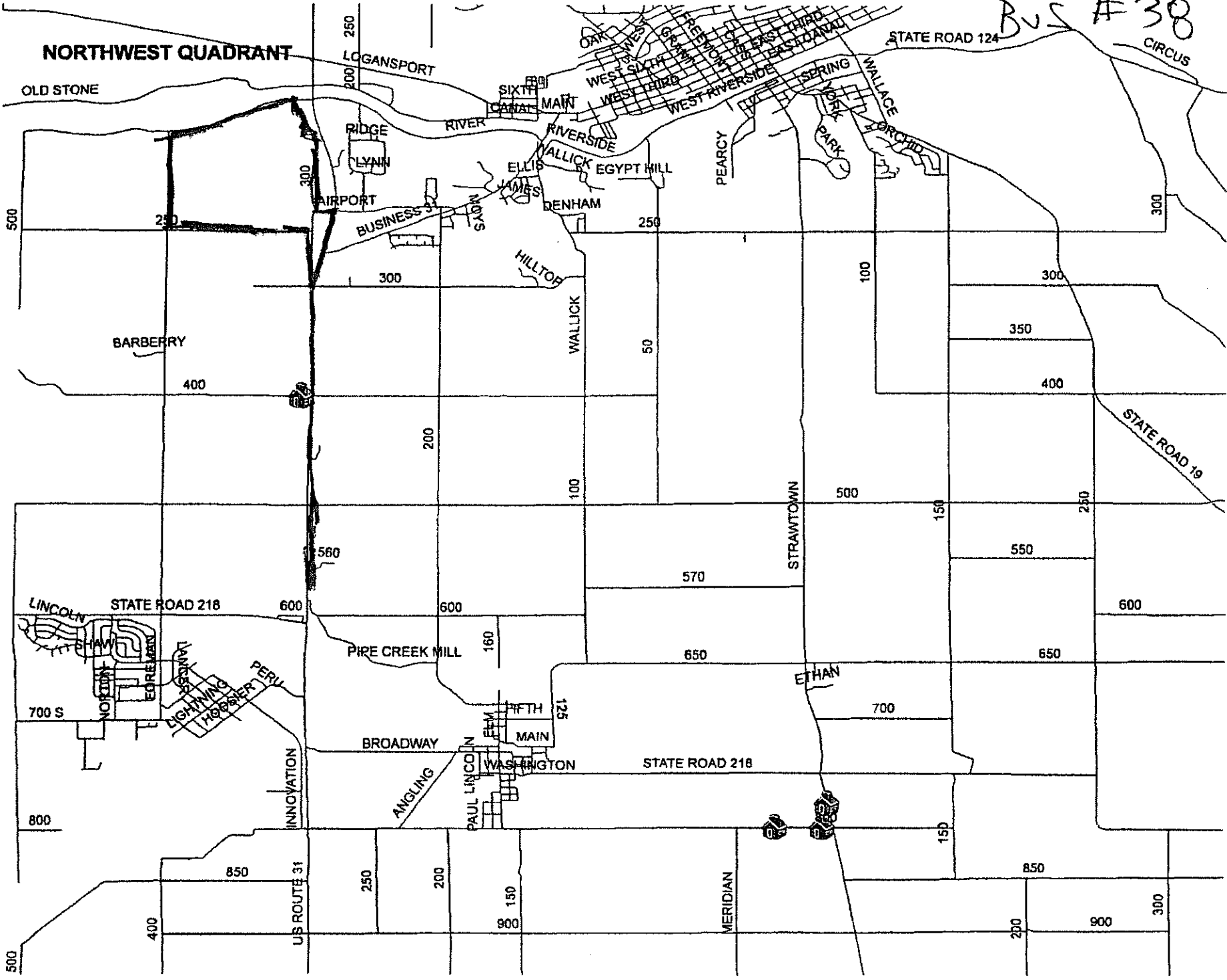




BJS # 38



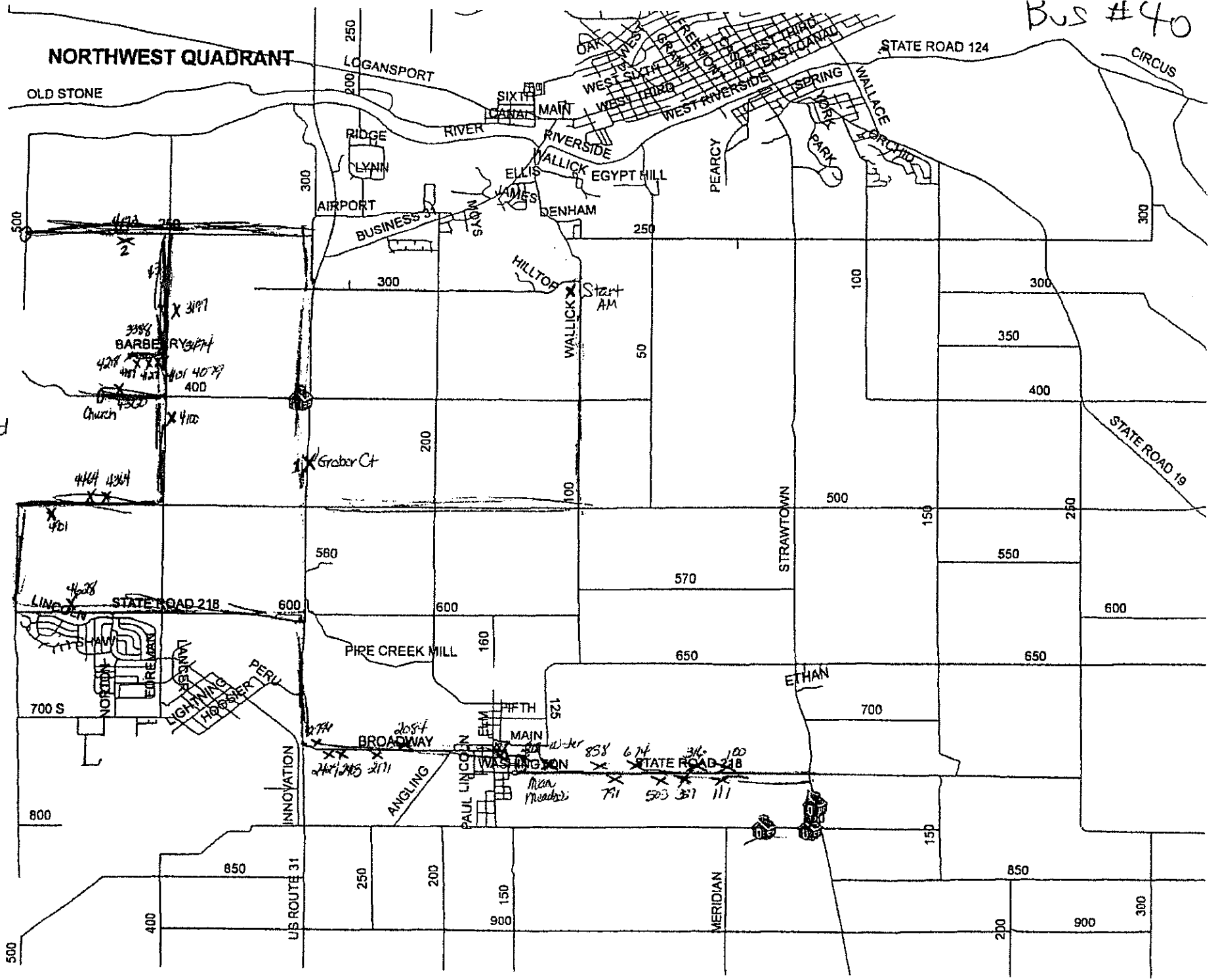
BUS # 38



Bus #40

NORTHWEST QUADRANT

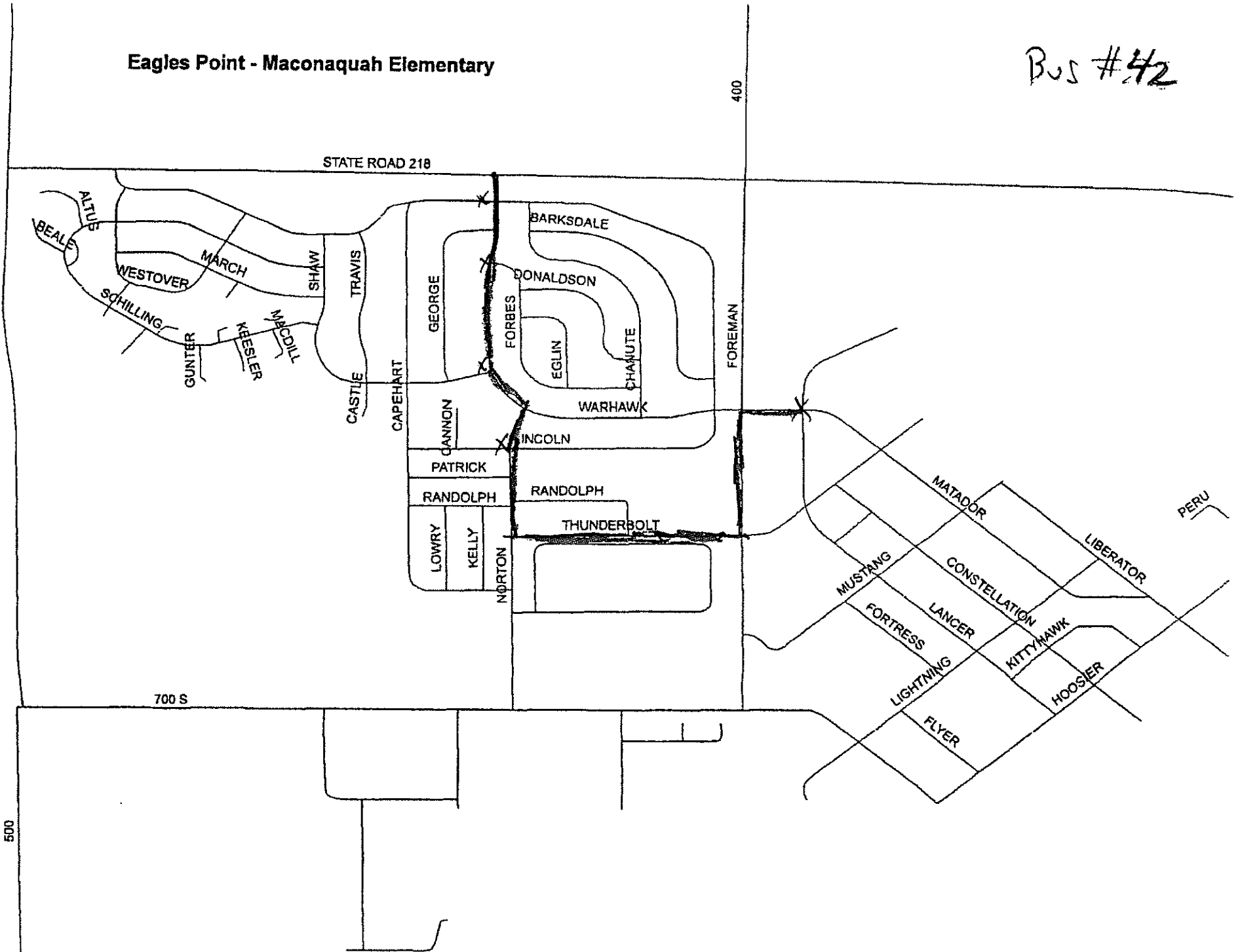
turn around





Eagles Point - Maconaquah Elementary

Bus #42



BUS # 43

500

800

SOUTHWEST QUADRANT

850

900

1000

400

US ROUTE 31

1050

1080

1100

1100

950  
25  
1000

MERIDIAN

1075

STAMTOWN

850

500

1200

1150

MERIDIAN

50

100

STATE ROAD 18

100

1300

1300

1350

MEADOW  
CLOVER

1400

1400

1400

200

150

100

Main 50

550

100

200

300

