

Jan 1, 2019 to Present

# PROFESSIONAL DEVELOPMENT



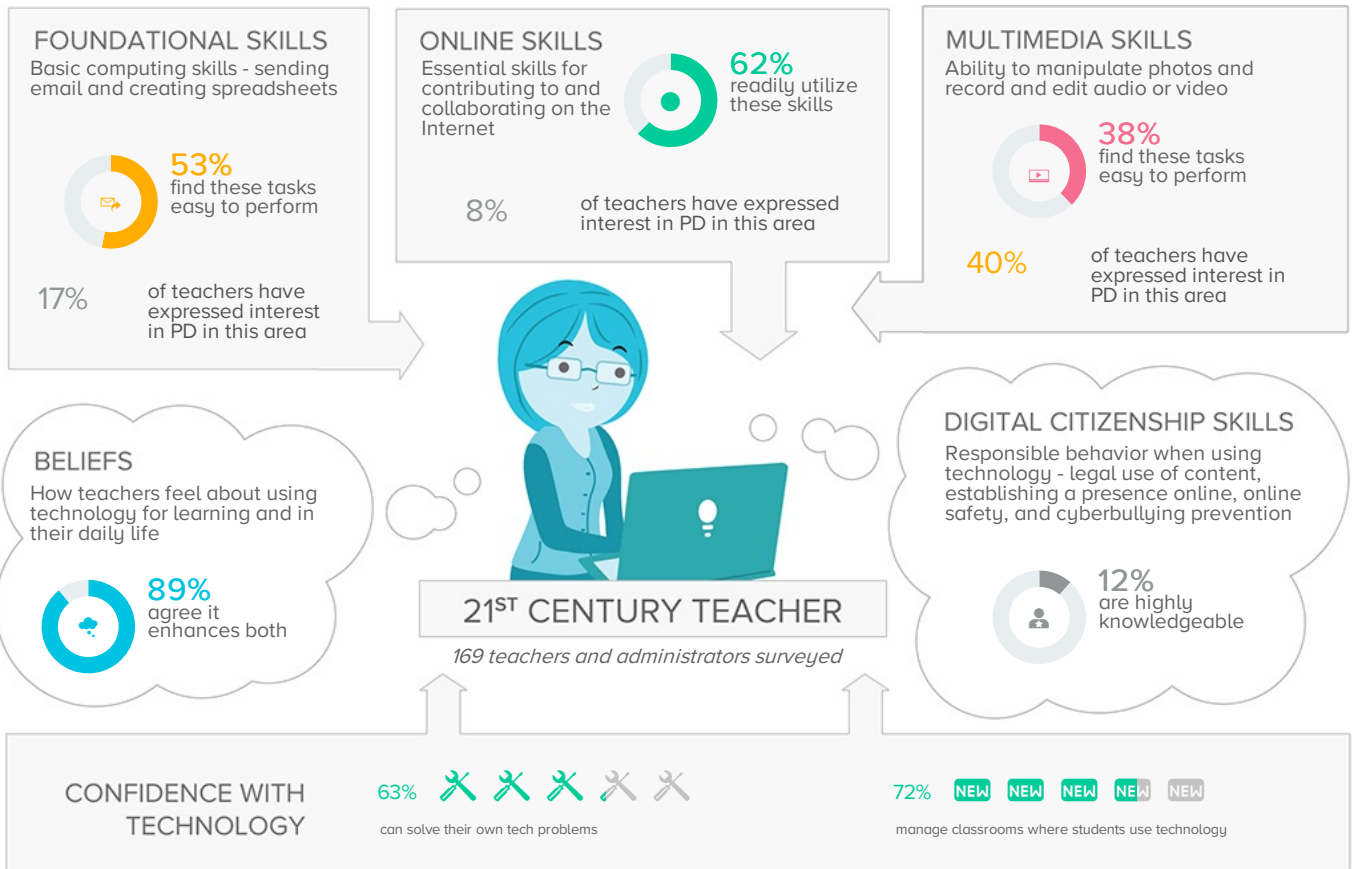
Progress reports that 14 hours of high quality professional development on a single topic is needed before the classroom is impacted to a statistically significant degree.

Effective professional development for teachers can have an enormous impact on teaching and learning in an organization. However, professional development experiences for teachers must be sustained and of high quality for improved learning outcomes to be realized. Specifically, the *Center for American Progress* reports that 14 hours of high quality professional development on a single topic is needed before the classroom is impacted to a statistically significant degree. However, CASE data collected from hundreds of schools indicates that 73% of teachers report less than 17 hours of school-sponsored professional development around technology in the last 12 months.

Research from the International Society of Technology Education (ISTE) also reveals that high quality professional development is job-embedded, personalized, and designed to promote skill transfer. Professional learning experiences must respond to teachers' interests, needs, and classroom settings. In many cases, these types of learning experiences can extend beyond the traditional school in-service setting to include webinars, Twitter chats, and other virtual experiences.

This type of dynamic instruction helps both teachers and students alike. A *Walden University* study reports that teachers who use technology frequently place the highest emphasis on using technology to promote problem-solving, critical thinking, and communication.

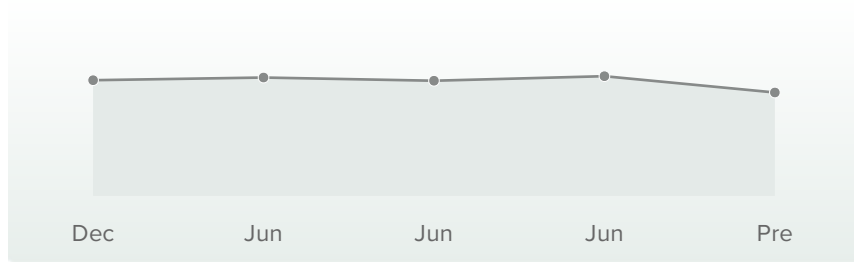
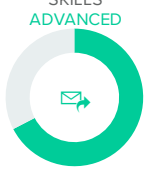
Being aware of teachers' skill profiles and interests with technology can greatly inform the development of a cohesive, integrated professional development plan that will enhance student learning outcomes.



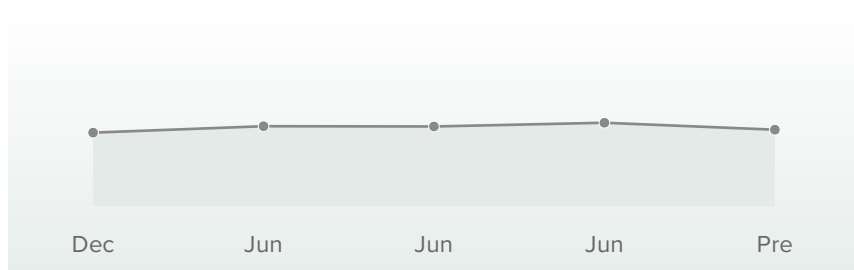
### Contributing Factors

The factors that most contribute to the success of your organization include ...

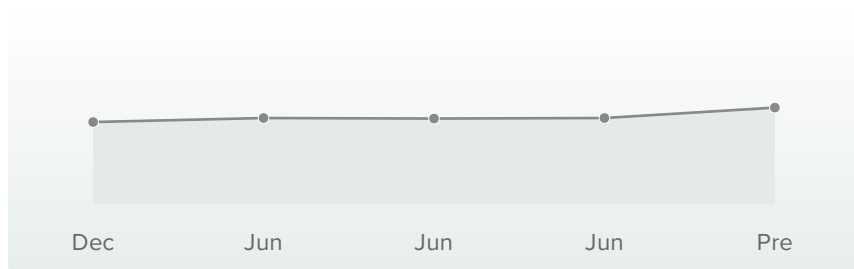
TEACHER FOUNDATIONAL SKILLS



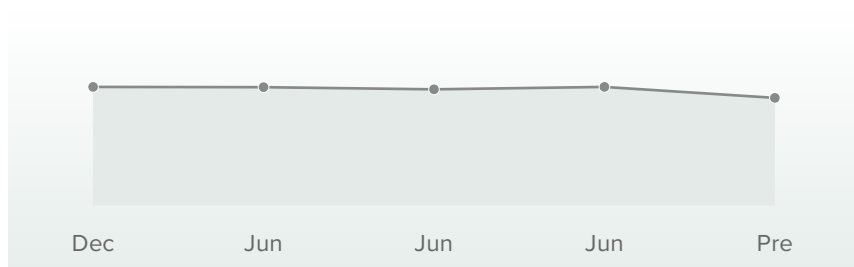
TEACHER ONLINE SKILLS



TEACHER MULTIMEDIA SKILLS



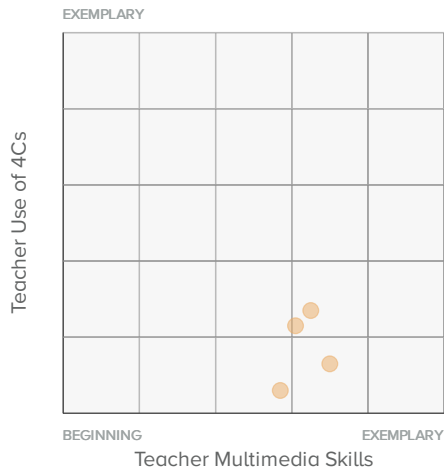
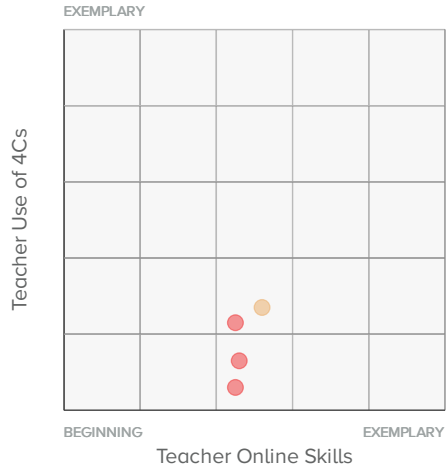
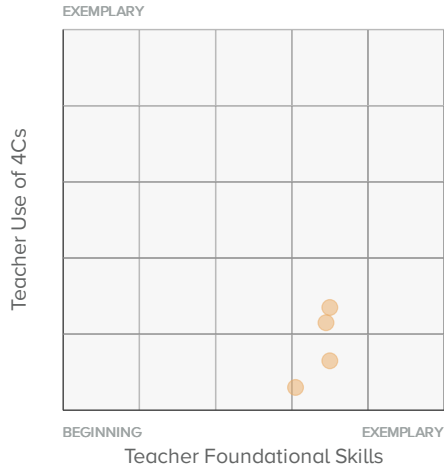
TEACHER BELIEFS



CASE™ Score Legend

- Beginning  
800-899
- Emerging  
900-999
- Proficient  
1000-1099
- Advanced  
1100-1199
- Exemplary  
1200-1300

Scatterplots



CASE™ Score Legend



Beginning  
800-899



Emerging  
900-999



Proficient  
1000-1099



Advanced  
1100-1199



Exemplary  
1200-1300

**SCHOOL SCORECARD**

| Schools                           | Date Range                  | Foundational Skills | Online Skills | Multimedia Skills | Beliefs |
|-----------------------------------|-----------------------------|---------------------|---------------|-------------------|---------|
| A Macarthur Barr Middle School    | Mar 25, 2019 - Apr 29, 2019 | ●                   | ●             | ●                 | ●       |
| George W Miller Elementary School | Mar 25, 2019 - Apr 29, 2019 | ●                   | ●             | ●                 | ●       |
| Highview Elementary School        | Mar 25, 2019 - Apr 29, 2019 | ●                   | ●             | ●                 | ●       |
| Nanuet Senior High School         | Mar 25, 2019 - Apr 29, 2019 | ●                   | ●             | ●                 | ●       |

CASE™ Score Legend

● Beginning  
800-899

● Emerging  
900-999

● Proficient  
1000-1099

● Advanced  
1100-1199

● Exemplary  
1200-1300