

*Jan 1, 2017 to Present*

# ***INFRASTRUCTURE*** *AT HOME*

*Nanuet Union Free School District*

## INFRASTRUCTURE AT HOME REPORT

NANUET UNION FREE SCHOOL DISTRICT



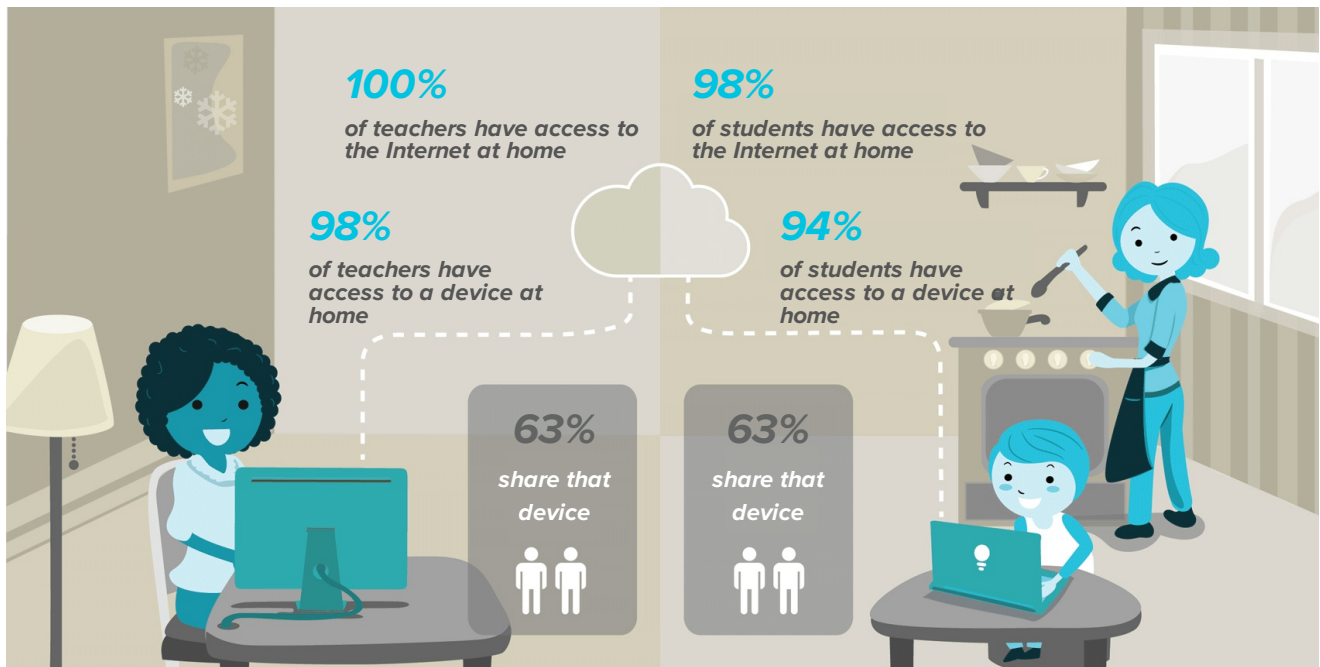
A recent Pew report states that 92% of teachers believe that access to technology and the Internet has had a major impact on instruction.

Teachers' and students' access to technology both at home and at school deeply affects the learning environment. Specifically, a recent Pew report states that 92% of teachers believe that access to technology and the Internet has had a major impact on instruction.

Students who are able to access technology at home can engage in anytime, anywhere learning. However, gaps in technology access often exist. While almost all teens have access to a digital device at home, the number of people with whom the device is shared is important. Devices shared between multiple people may not always be available for learning. According to Pew, although 93% of teens have a computer or have access to one at home, 71% share that access with other family members.

Teachers who are able to access technology at home can better plan transformative instruction. Teachers who have access to computers at home are more likely to use technology frequently and thus have better technology skills. These skills are a prerequisite to the use of digital creativity, digital collaboration, digital communication, and critical thinking in the classroom. According to the 2011 US Census, close to 80% of Americans have access to a home computer, and 98% of all American homes are capable of receiving high speed Internet.

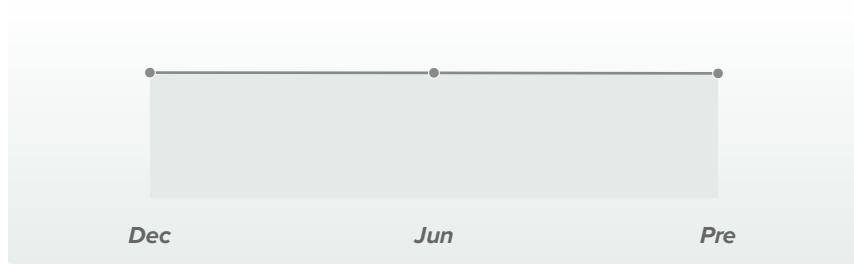
Schools and districts should create and support policies that increase access to technology at home for teachers and students. Anytime, anywhere access to technology fosters anytime, anywhere access to connected learning.



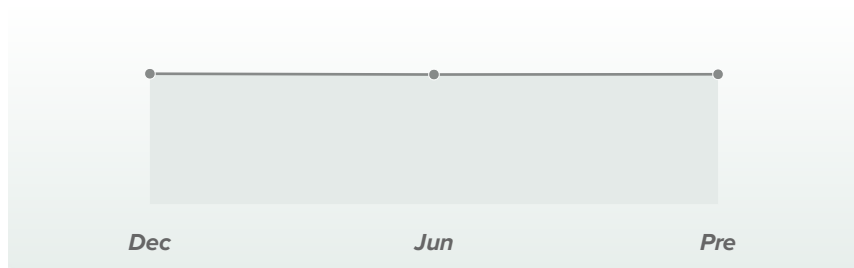
### Contributing Factors

The factors that most contribute to the success of your organization include ...

STUDENT TECHNOLOGY  
ACCESS AT HOME  
EXEMPLARY



TEACHER TECHNOLOGY  
ACCESS AT HOME  
EXEMPLARY



CASE™ Score Legend



Beginning  
800-899



Emerging  
900-999



Proficient  
1000-1099

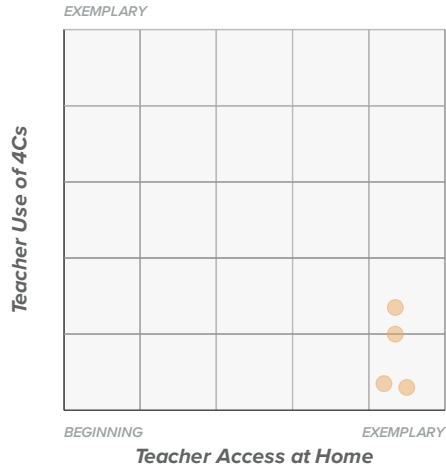
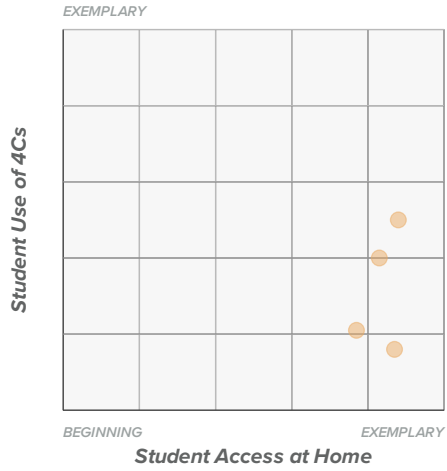


Advanced  
1100-1199



Exemplary  
1200-1300

**Scatterplots**



**CASE™ Score Legend**

- **Beginning**  
800-899
- **Emerging**  
900-999
- **Proficient**  
1000-1099
- **Advanced**  
1100-1199
- **Exemplary**  
1200-1300

**SCHOOL SCORECARD**

Schools	Date Range	Student Access at Home	Teacher Access at Home
<i>A Macarthur Barr Middle School</i>	<i>Apr 3, 2017 - Apr 24, 2017</i>		
<i>George W Miller Elementary School</i>	<i>Apr 3, 2017 - May 8, 2017</i>		
<i>Highview Elementary School</i>	<i>Apr 3, 2017 - Apr 24, 2017</i>		
<i>Nanuet Senior High School</i>	<i>Apr 3, 2017 - Apr 24, 2017</i>		

CASE™ Score Legend

Beginning  
800-899

Emerging  
900-999

Proficient  
1000-1099

Advanced  
1100-1199

Exemplary  
1200-1300