

Jan 1, 2019 to Present

INFRASTRUCTURE AT HOME

INFRASTRUCTURE AT HOME REPORT

NANUET UNION FREE SCHOOL DISTRICT



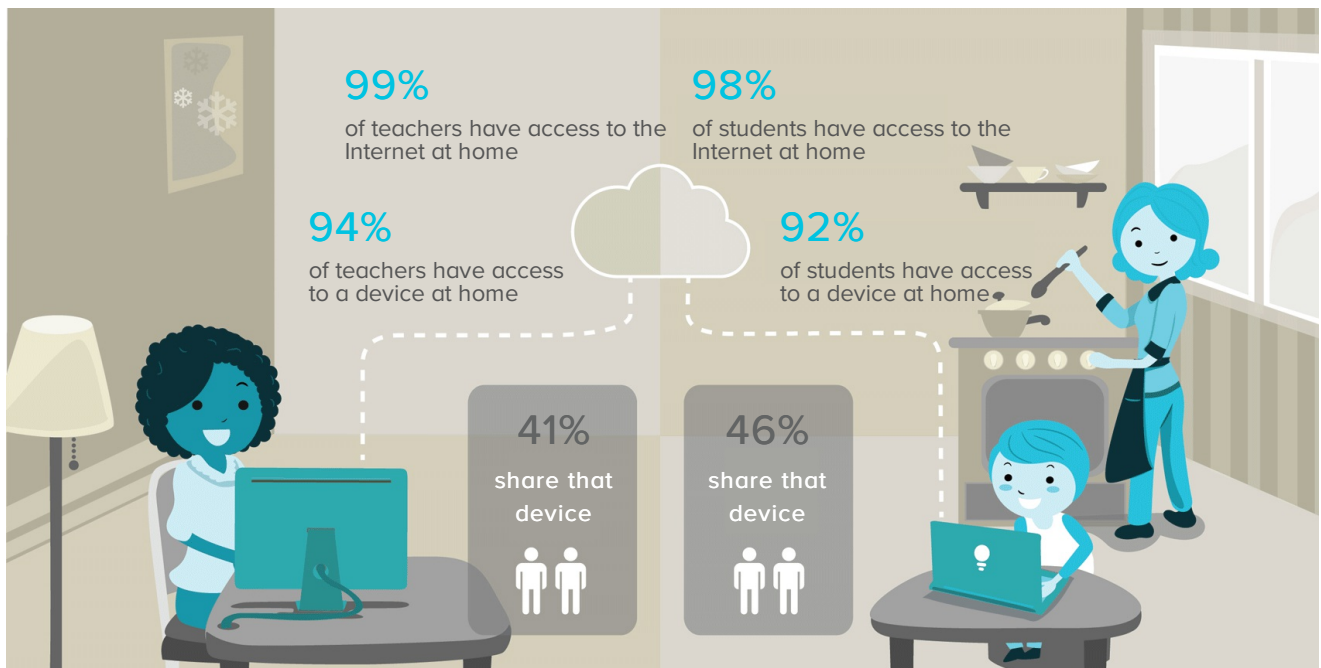
A recent *Pew* report states that 92% of teachers believe that access to technology and the Internet has had a major impact on instruction.

Teachers' and students' access to technology both at home and at school deeply affects the learning environment. Specifically, a recent *Pew* report states that 92% of teachers believe that access to technology and the Internet has had a major impact on instruction.

Students who are able to access technology at home can engage in anytime, anywhere learning. However, gaps in technology access often exist. While almost all teens have access to a digital device at home, the number of people with whom the device is shared is important. Devices shared between multiple people may not always be available for learning. According to *Pew*, although 93% of teens have a computer or have access to one at home, 71% share that access with other family members.

Teachers who are able to access technology at home can better plan transformative instruction. Teachers who have access to computers at home are more likely to use technology frequently and thus have better technology skills. These skills are a prerequisite to the use of digital creativity, digital collaboration, digital communication, and critical thinking in the classroom. According to the 2011 *US Census*, close to 80% of Americans have access to a home computer, and 98% of all American homes are capable of receiving high speed Internet.

Schools and districts should create and support policies that increase access to technology at home for teachers and students. Anytime, anywhere access to technology fosters anytime, anywhere access to connected learning.



INFRASTRUCTURE AT HOME REPORT

NANUET UNION FREE SCHOOL DISTRICT

CLASSROOM

ACCESS

SKILLS

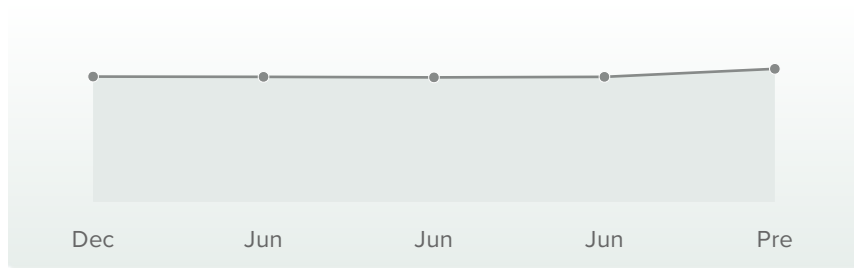
ENVIRONMENT

Contributing Factors

The factors that most contribute to the success of your organization include ...

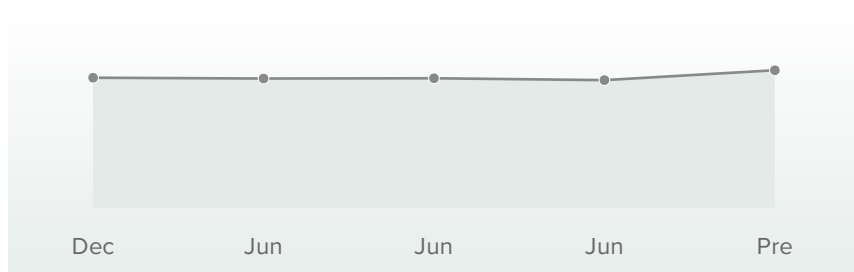
STUDENT TECHNOLOGY
ACCESS AT HOME

EXEMPLARY



TEACHER TECHNOLOGY
ACCESS AT HOME

EXEMPLARY



CASE™ Score Legend

● Beginning
800-899

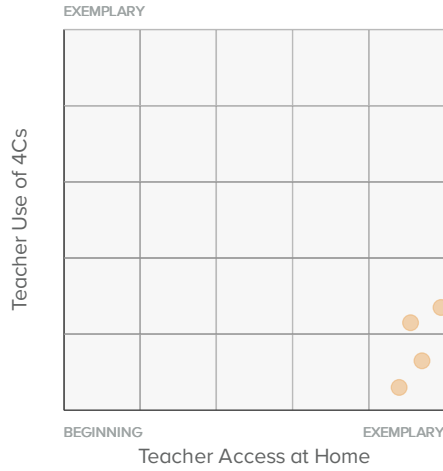
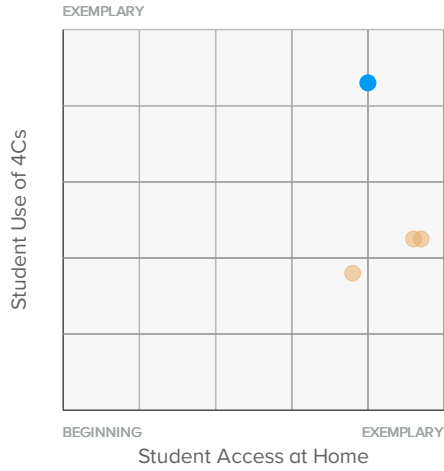
● Emerging
900-999

● Proficient
1000-1099

● Advanced
1100-1199

● Exemplary
1200-1300

Scatterplots



CASE™ Score Legend

- Beginning**
800-899
- Emerging**
900-999
- Proficient**
1000-1099
- Advanced**
1100-1199
- Exemplary**
1200-1300

SCHOOL SCORECARD

Schools	Date Range	Student Access at Home	Teacher Access at Home
A Macarthur Barr Middle School	Mar 25, 2019 - Apr 29, 2019		
George W Miller Elementary School	Mar 25, 2019 - Apr 29, 2019		
Highview Elementary School	Mar 25, 2019 - Apr 29, 2019		
Nanuet Senior High School	Mar 25, 2019 - Apr 29, 2019		

CASE™ Score Legend

Beginning
800-899

Emerging
900-999

Proficient
1000-1099

Advanced
1100-1199

Exemplary
1200-1300