



Why YOU should fill out the 2020 Census?



YOUR IDENTITY IS SAFE AND 100% CONFIDENTIAL



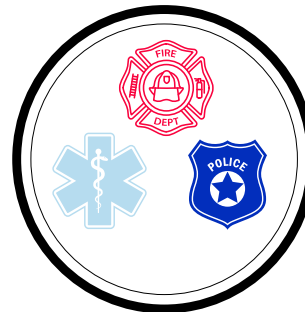
The 2020 Census provides data that determines house representation and village funding for Port Chester for the next decade.

YOUR data gives you the power to decide!



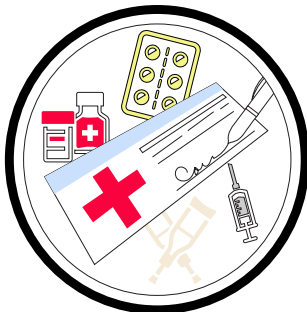
PC School Funding For:

- Special Education
- Head Start Programs
- After School Programs



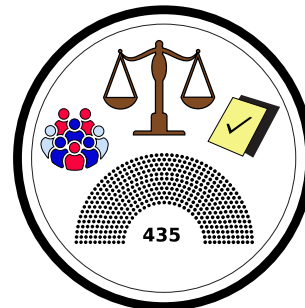
- EMT
- Firefighters
- Police

First Responders



Medicaid

Open Door, Family Services of Westchester



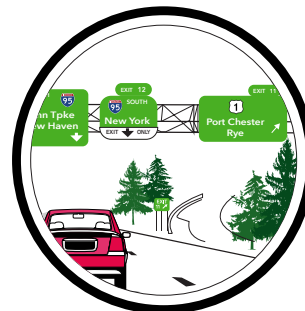
Congress/Washington D.C
County/White Plains

Congressional Representation



Food Security

Free School Breakfast and Lunch Program



Highway Planning & Construction

I-95
 Post Road

To fill out your 2020 Census today:

English 844-330-2020 (open 7am-2am EST) Visit: www.my2020census.gov
Spanish 844-468-2020

