

REOPENING



PORT CHESTER
PUBLIC SCHOOLS



Guiding Principles of the District's Reopening Plan

- 1** The safety and wellness of the school community (students, faculty, staff, administration, partners)
- 2** High quality instruction to students, regardless of the mode of instruction

REOPENING PLAN

AN ENORMOUS UNDERTAKING

- **Health and Safety**
- **Facilities**
- **Nutrition**
- **Transportation**
- **Social-Emotional Well-Being**
- **School Schedules**
- **Budget and Fiscal Matters**
- **Attendance**
- **Technology and Connectivity**
- **Teaching and Learning**
- **Special Education**
- **Bilingual Education and World Languages**
- **Staffing and Human Resources**

The district's number one priority is a safe learning environment that protects both the student's health and wellness as well as allowing them to effectively learn.



Face Masks



Face Shields



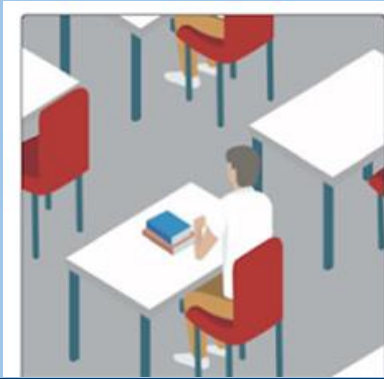
Transparent Shields



Nitrile Gloves



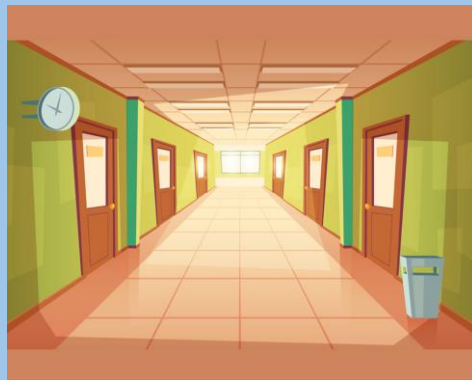
Daily Health Screenings and Temperature Checks



Reduced and Socially-distanced Classroom Seating



Social Distancing in Hallways and Stairwells



Where Possible, Fewer Classroom Changes

Please wear a cloth face covering.

6 ft

Maintain a distance of 6 feet whenever possible.

Symptoms of Coronavirus (COVID-19)

Know the symptoms of COVID-19, which can include the following:

- Cough
- Fever
- Chills
- Shortness of breath
- Loss of taste or smell
- Sore throat
- Nausea or vomiting

Symptoms can range from mild to severe illness, and appear 2-14 days after you are exposed to the virus that causes COVID-19.

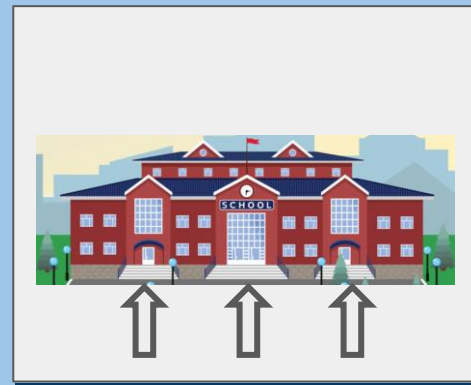
*Seek medical care immediately if someone has emergency warning signs of COVID-19.

- Trouble breathing
- Persistent pain or pressure in the chest
- New confusion
- Inability to walk or stay awake
- Bluish lips or face

This is not a list of possible symptoms. Please call your medical provider for any other symptoms that are new or concerning for you.

[cdc.gov/coronavirus](https://www.cdc.gov/coronavirus)

Signage to Promote Health and Safety



Multiple Points of Entry to Minimize Congestion



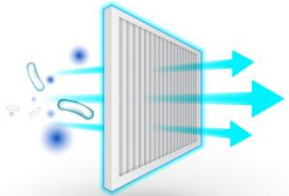
Sanitation Stations
Throughout the Building



Avoiding the Sharing of
Equipment and Supplies



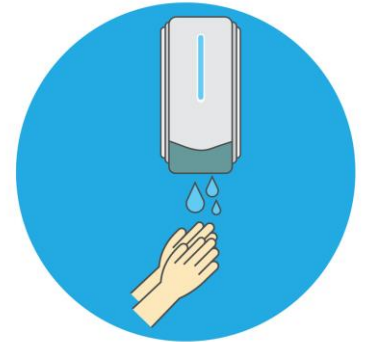
Increased Cleaning and
Sanitation



Increased Air Filtration to
Meet Required Standards



Disinfecting Equipment
and Supplies



Sanitizer Dispensers and
Refills On-hand

CLASSROOM INSTRUCTIONAL MODELS



REMOTE LEARNING

“HYBRID LEARNING”



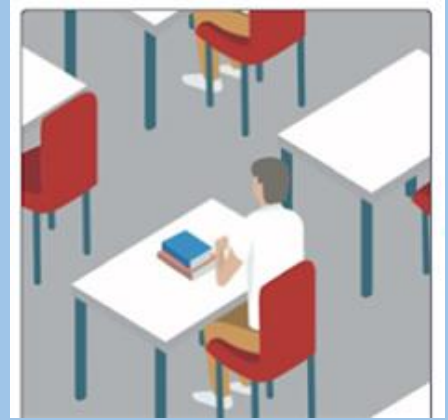
IN-PERSON LEARNING



“REMOTE LEARNING”

HYBRID LEARNING

- Students attend school in person on some days and remotely on others.
- Class sizes reduced to facilitate social distancing.
- Attendance taken daily whether students are in school or home.
- Schools will implement social distancing measures to meet established thresholds wherever possible.
- Masks are required with mask breaks occurring during the day.
- Students attending school in person do so during regular school hours following a standard school schedule, which may be adjusted from the traditional schedule.
- Students attending school remotely will be provided substantively similar opportunities to students in school.
- Remote tele-health and tele-therapy options will be available.
- Teachers meet with remote students daily utilizing Google Classroom and its Meet tool.
- Synchronous learning is a goal for remote instructional days.



HYBRID LEARNING--ALTERNATING DAY MODEL

Students attend school on alternating days with Wednesdays reserved for additional in-person learning for a limited number of priority students and with remote learning for all others. Students will be placed into groups. Some groups will attend school for in-person learning while other groups will remain home for remote learning.

ADVANTAGES

- Students receive live interactive instruction each week.
- Smaller class sizes enable greater attention to students in school.
- Progress monitoring is enabled via face-to-face interactions.
- Students are not always on devices.
- ENL and Special Education students have the opportunity for more interaction with peers.
- Counselors and other professionals get the chance to see students and make stronger connections with them.
- Provides an academic support system for needy students and those for whom virtual learning is difficult.

DISADVANTAGES

- Creates a need for creative scheduling and arduous lesson planning for teachers unless remote learning and in-person learning are synchronous.
- Continuity established during in-person learning will be disrupted by days of remote learning.
- Routines would suffer when the weeks do not follow a neat pattern because of a holiday.
- Need for very flexible daycare, which could create a hardship for some parents.

ELEMENTARY SCHEDULE

“HYBRID LEARNING”



REMOTE LEARNING

MONDAY & TUESDAY/
THURSDAY & FRIDAY
MODEL



IN-PERSON LEARNING

MONDAY

TUESDAY

WEDNESDAY

THURSDAY

FRIDAY

COHORT
A

--



COHORT
B

--



ELEMENTARY SCHEDULE

“HYBRID LEARNING”



REMOTE LEARNING

**AM/PM
MODEL**



IN-PERSON LEARNING

SCHOOL DAYS 8:30-10:55

SCHOOL DAYS 12:30-2:55

COHORT --
AM



Class Meeting
Guided Reading
Reading Workshop
Writing
Mathematics



Rotation of Specials:
Physical Education
Music
Science
& Supports

COHORT --
PM



Rotation of Specials:
Physical Education
Music
Science
& Supports



Class Meeting
Guided Reading
Reading Workshop
Writing
Mathematics

ELEMENTARY HYBRID PLANS



REMOTE LEARNING

“HYBRID LEARNING”



IN-PERSON LEARNING

**MONDAY & TUESDAY/
THURSDAY & FRIDAY
MODEL**

VS.

**AM/
PM
MODEL**

**The most semblance of a real school day
A teacher in front of students every single day
No live broadcasting by teachers to part of their class that is at home**

Hybrid Model: In-Person Learning Days by Cohort

Port Chester Elementary Schools

Hybrid Elementary Schedules:

**AM Session
8:30-10:55**

**PM Session
12:30-2:55**



October 2020

Monday	Tuesday	Wednesday	Thursday	Friday
			1 REMOTE LEARNING	2 REMOTE LEARNING
5 REMOTE LEARNING	6 REMOTE LEARNING	7 REMOTE LEARNING	8 REMOTE LEARNING	9 REMOTE LEARNING
12 COLUMBUS DAY	13 AM PM	14 AM PM	15 AM PM	16 AM PM
19 AM PM	20 AM PM	21 AM PM	22 AM PM	23 AM PM
26 AM PM	27 AM PM	28 AM PM	29 AM PM	30 AM PM

TIMELINE

September 11-18

Complete gathering data from latest parent surveys

September 21-30

Disaggregate, scrub, and analyze the data; look at models that could best fit the data; restructure elementary classes

October 1-12

Create Student Schedules, reassign personnel and students as needed

October 13

Elementary Hybrid Opening, in-person for all who want it

HYBRID OPENING PLANS

1. Listened to the community and to parents
2. Studied and considered alternative models
3. Made the best educational decisions with the information we've had at the time
4. Are transitioning to a hybrid model in the hopes of full in-person learning in the future
5. Are providing families this information in advance so that they can plan for childcare options
6. Need more time to consider how to pull off hybrid instruction at the middle and high school levels



We look forward to welcoming students back into buildings in October!

REOPENING



PORT CHESTER
PUBLIC SCHOOLS

UPDATE

