

**Monday**
**Tuesday**
**Wednesday**
**Thursday**
**Friday**

**Condiments Offered Daily**
**Ketchup, Mustard**
**Ranch, Relish**
**Salad Dressing, Salsa**

**Grilled Ham & Cheese 1**  
 Sandwich  
 Carrot Coins  
 Coleslaw  
 Mixed Fruit Cup  
 Milk

**4**  
**Cheeseburger**  
 Seasoned Fries  
 Tossed Salad  
 Orange  
 Milk

**5**  
**Turkey & Cheese**  
 Sandwich  
 Steamed Broccoli w/ Cheese  
 Julienne Mixed Vegetables  
 Peach, canned  
 Milk

**6**  
**Pulled Pork Sandwich**  
 Mexican Zucchini  
 Tomato Wedges  
 Granny Smith Apple  
 Milk

**7**  
**Breaded Chicken**  
 Sandwich  
 Baby Carrots  
 Celery Sticks  
 Mixed Fruit Cup  
 Milk

**8**  
**Hot Dog**  
 Baked Beans  
 Mexicali Corn  
 Banana  
 Milk

**11**  
**Meatball Sub**  
 Mixed Vegetables  
 Cucumber Slices  
 Fruit Salad  
 Milk

**12**  
**Beef Gordita**  
 Mashed Potatoes  
 Green Beans  
 Mandarin Orange Cup  
 Milk

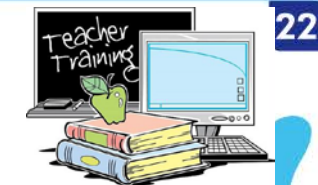
**13**  
**Meatloaf Sandwich**  
 Sweet Potato Fries  
 Lettuce, Tomato  
 Grapes  
 Milk

**14**  
**BBQ Rib Sandwich**  
 Charro Beans  
 Celery Sticks  
 Juice Rush  
 Milk

**15**  
**Sub Sandwich**  
 Tossed Salad  
 Carrot Coins  
 Applesauce Cup  
 Milk

**18**
**19**  
**Sloppy Joe**  
 Broccoli  
 Lettuce w/Tomato  
 Grapes  
 Milk

**20**  
**Patty Melt**  
 Baby Carrots  
 Sweet Corn  
 Orange  
 Milk

**21**

**22**
**25**  
**Pulled Pork Sandwich**  
 Broccoli/Cauliflower  
 Carrot Raisin Salad  
 Rosati Ice  
 Milk

**26**  
**Breaded Chicken**  
 Sandwich  
 Baked Beans  
 Tossed Salad  
 Peach Cup  
 Milk

**27**  
**Tuna Sandwich**  
 Steamed Broccoli  
 Celery Sticks  
 Pineapple, Canned  
 Milk

**28**  
**Turkey & Cheese**  
 Sandwich  
 Corn on Cob  
 Cucumbers Slices  
 Grapes  
 Milk

**Non Discrimination Statement**

The US Department of Agriculture (USDA) prohibits discrimination against its customers, employees, and applicants for employment on the bases of race, color, national origin, age, disability, sex, gender identity, religion, reprisal and, where applicable, political beliefs, marital status, familial or parental status, sexual orientation, or if all or part of an individual's income is derived from any public assistance program, or protected genetic information in employment or in any program or activity conducted or funded by the Department.