

Highview Elementary School 3rd Grade Supply List 2020 - 2021



Please take note of which supplies are needed in school and which should be kept at home for virtual (at-home) learning.

Total to be Purchased	Sent to School	Kept at Home
4 dozen Ticonderoga # 2 pencils (sharpened)	2 dozen	2 dozen
5 two-pocket plastic folders (horizontal pockets)	5 folders	
3 Marble notebooks	3 notebooks	
1 package (12 or 24) of thin markers OR crayons		1 package
2 block erasers	1 eraser	1 eraser
2 boxes of tissues (family size)	2 boxes	
1 12 box of colored pencils (sharpened)	1 box	
1 zipper pencil case (no pencil boxes please!)	1 zipper pencil case	
2 large Elmer glue sticks	1 glue stick	1 glue stick
2 pads of 3 x 3 Post-Its	1 pad	1 pad
1 pair blunt tip scissors	1 pair	
2 pairs of earbuds (labeled with name and in a sealed Ziploc bag)	1 pair	1 pair
1 box of Ziploc bags	Girls- 1 quart size Boys- 1 gallon size	
1 handheld pencil sharpener (with attachment to hold shavings)	1 sharpener	
2 highlighters	1 highlighter	1 highlighter
1-12 inch ruler with cm side		1 ruler

5 Face Masks *(reusable masks are recommended) - 3 to be worn interchangeably to school and 2 additional masks to be sent to school in a sealed, labeled Ziploc bag to be kept in the classroom.

**3rd Grade lista de útiles escolares
2020 -2021**



Tome nota de qué suministros se necesitan en la escuela y cuáles deben mantenerse en casa para el aprendizaje virtual (en casa).

Total para comprar	Enviar a la escuela	Mantener en casa
4 docenas de lápices Ticonderoga # 2 (afilados)	2 docena	2 docena
5 carpetas de plástico de dos bolsillos horizontales	5 carpetas	
3 cuadernos de mármol	3 cuadernos	
1 paquete (12 o 24) de marcadores delgados o crayones		1 paquete
2 gomas de borrar grandes	1 goma	1 goma
2 cajas de pañuelos Kleenex	2 cajas	
1 caja de 12 lápices de colores (afilados)	1 caja	
1 estuche de lápices con cremallera (que no sean cajas por favor)	1 estuche	
2 barras de pegamento Elmer grandes	1 barra	1 barra
2 paquetes de Post-Its 3x3	1 paquete	1 paquete
1 par de tijeras de punta redonda	1 par	
2 pares de auriculares (etiquetados con nombre y en una bolsa Ziploc sellada)	1 par	1 par
1 caja de bolsas Ziploc	Chicas- tamaño de 1 cuarto Chicos- tamaño de 1 gal	
1 sacapuntas de mano (con accesorio para sujetar virutas)	1 sacapuntas	
2 marcadores resaltadores	1 marcador	1 marcador
1 regla de 12" con lado de cm		1 regla
3 5 máscaras faciales * (se recomiendan máscaras reutilizables): 3 para usar indistintamente a la escuela y 2 máscaras adicionales para enviar a la escuela en una bolsa Ziploc sellada y etiquetada para guardar en el aula.		

Highview Elementary School

4th Grade Supply List

2020 - 2021



Please take note of which supplies are needed in school and which should be kept at home for virtual (at-home) learning.

Total to be Purchased	Sent to School	Kept at Home
4 dozen Ticonderoga # 2 pencils (sharpened)	2 dozen	2 dozen
5 pack two-pocket folder without clasp	5 folders (Red, Blue, Yellow, Green, Purple)	
2 packages Index cards ruled white 100 count – 3 X 5	1 package	1 package
2 block erasers	1 eraser	1 eraser
2 Kleenex Tissues large boxes	2 boxes	
1 Prang 7" colored pencils 12 count	1 box	
1 pencil pouch zippered heavy canvas with grommets, see through front, exterior mess pocket with zipper	1 zipper pencil pouch (no pencil boxes please!)	
2 large Elmer glue sticks washable	1 glue stick	1 glue stick
2 3 x 3 Post-It pads 100 count	1 pad	1 pad
1 5" stainless steel blunt scissors	1 pair	
2 pairs of Stereo earbuds **Can be purchased at Dollar Store	1 pair Labeled with name in sealed Ziploc bag	1 pair
1 box of Ziploc bags	Girls- 1 quart size Boys- 1 gallon size	
2 highlighters	1 highlighter	1 highlighter
1-12" ruler plastic standard/metric		1 ruler
5 Face Masks *(reusable masks are recommended) - 3 to be worn interchangeably to school and 2 additional masks to be sent to school in a sealed, labeled Ziploc bag to be kept in the classroom.		

**4th Grade lista de útiles escolares
2020 - 2021**



Tome nota de qué suministros se necesitan en la escuela y cuáles deben mantenerse en casa para el aprendizaje virtual (en casa).

Total para comprar	Enviar a la escuela	Mantener en casa
4 docenas de lápices Ticonderoga # 2 (afilados)	2 docenas	2 docenas
Paquete de 5 carpetas de dos bolsillos sin cierre	5 carpetas (rojo, azul, amarillo, verde, morado)	
2 paquetes de fichas index en blanco 100 total - 3 X 5	1 paquete	1 paquete
2 gomas de borrar (grandes)	1 goma	1 goma
2 cajas grandes de Kleenex	2 cajas	
1 Prang 7" lápices de colores 12 total	1 caja	
1 estuche de lápices de lona con cremallera, bolsillo exterior transparente con cremallera	1 estuche de lápices con cremallera (¡no comprar cajas de lápices por favor!)	
2 barras de pegamento Elmer grandes lavables	1 barra	1 barra
2 3 x 3 Post-It de 100 cuenta cada uno	1 paquete	1 paquete
1 tijera con punta redonda de acero inoxidable de 5 "	1	
2 pares de auriculares estéreo ** Se puede comprar en Dollar Store	1 par con su nombre en una bolsa Ziploc	1 par
1 caja de bolsas Ziploc	Chicas- tamaño de 1 cuarto Chicos- tamaño de 1 gal	
2 marcadores resaltadores	1 marcador	1 marcador
1 regla de 12"		1 regla
3 5 máscaras faciales * (se recomiendan máscaras reutilizables): 3 para usar indistintamente a la escuela y 2 máscaras adicionales para enviar a la escuela en una bolsa Ziploc sellada y etiquetada para guardar en el aula.		

NANUET PUBLIC SCHOOLS 2020-21 Calendar - Revised 7/28/20

S	M	T	W	TH	F	S	
		1	2	3	4	5	SEPTEMBER 7 Labor Day 8, 9, 10 SCD 11 Staff Dev Day <i>14 Schools Open</i> 28 Yom Kippur 16 (staff) 12 (students)
6	7	8	9	10	11	12	
13	14	15	16	17	18	19	
20	21	22	23	24	25	26	
27	28	29	30				

S	M	T	W	TH	F	S	
	1	2	3	4	5	6	FEBRUARY 15 Washington's Birthday 15-19 Mid-Winter Recess 15 (staff) 15 (students)
7	8	9	10	11	12	13	
14	15	16	17	18	19	20	
21	22	23	24	25	26	27	
28							

S	M	T	W	TH	F	S	
				1	2	3	OCTOBER 12 Columbus Day 21 (staff) 21 (students)
4	5	6	7	8	9	10	
11	12	13	14	15	16	17	
18	19	20	21	22	23	24	
25	26	27	28	29	30	31	

S	M	T	W	TH	F	S	
	1	2	3	4	5	6	MARCH 19 Rapid Dismissal Day 27 Passover begins 29-31 Spring Recess 20 (staff) 20 (students)
7	8	9	10	11	12	13	
14	15	16	17	18	19	20	
21	22	23	24	25	26	27	
28	29	30	31				

S	M	T	W	TH	F	S	
1	2	3	4	5	6	7	NOVEMBER 3 Election Day 11 Veterans Day (observed) 25 Half Day for Students & Staff 26-27 Thanksgiving 18 (staff) 18 (students)
8	9	10	11	12	13	14	
15	16	17	18	19	20	21	
22	23	24	25	26	27	28	
29	30						

S	M	T	W	TH	F	S	
				1	2	3	APRIL 1-5 Spring Recess 4 Easter 19 (staff) 19 (students)
4	5	6	7	8	9	10	
11	12	13	14	15	16	17	
18	19	20	21	22	23	24	
25	26	27	28	29	30		

S	M	T	W	TH	F	S	
		1	2	3	4	5	DECEMBER 24-31 Holiday Recess 17 (staff) 17 (students)
6	7	8	9	10	11	12	
13	14	15	16	17	18	19	
20	21	22	23	24	25	26	
27	28	29	30	31			

S	M	T	W	TH	F	S	
						1	MAY 31 Memorial Day 20 (staff) 20 (students)
2	3	4	5	6	7	8	
9	10	11	12	13	14	15	
16	17	18	19	20	21	22	
23	24	25	26	27	28	29	
30	31						

S	M	T	W	TH	F	S	
					1	2	JANUARY 1 New Year's Day 18 Martin Luther King, Jr. Day 26-29 Regents 19 (staff) 19 (students)
3	4	5	6	7	8	9	
10	11	12	13	14	15	16	
17	18	19	20	21	22	23	
24	25	26	27	28	29	30	
31							

S	M	T	W	TH	F	S	
		1	2	3	4	5	JUNE 16 - 24 Regents 24 & 25 Half Day for Students Only <i>25 Last Day of School for Students</i> 19 (staff) 19 (students)
6	7	8	9	10	11	12	
13	14	15	16	17	18	19	
20	21	22	23	24	25	26	
27	28	29	30				

Totals:

91 (staff) 87 (students)

Totals:

93 (staff) 93 (students)



No Student or Staff Attendance

Supt Conference or Staff Dev Day - Staff Attendance Only

Half Day (for Students Only or Students & Staff as indicated)

180 Student Days - 184 Staff Days (3 Sup. Conf. Days, plus 1 Staff Dev. Day)

Emergency Closing Policy:

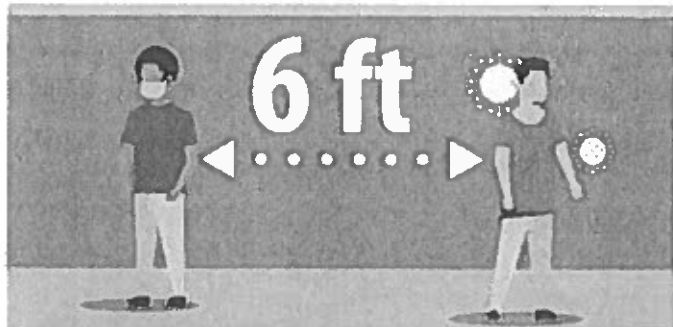
Four (4) snow days are built into the school calendar in the event schools must be closed for hazardous conditions or inclement weather. If closings exceed four days before Mid-Winter recess, the following will be used as school days in this order:

Friday, February 19, Thursday, February 18, Wednesday, February 17.

Any additional days and order of days to be determined by the Superintendent. The District will not consider travel costs as a reason to approve personal days if emergency conditions restore days to the school calendar.

Stop the Spread of Germs

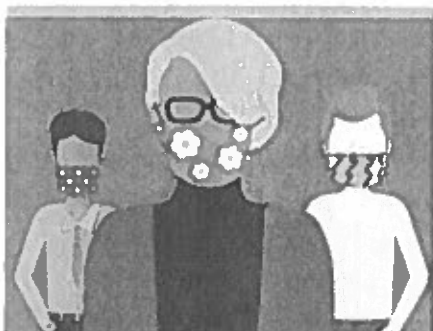
Help prevent the spread of respiratory diseases like COVID-19.



Stay at least 6 feet
(about 2 arms' length)
from other people.



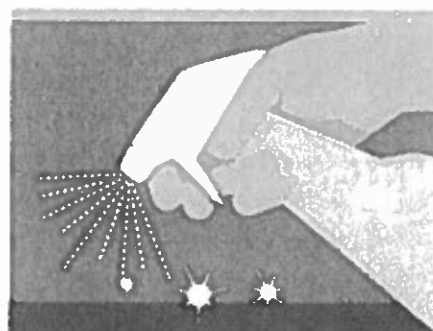
Cover your cough or sneeze with a
tissue, then throw the tissue in the
trash and wash your hands.



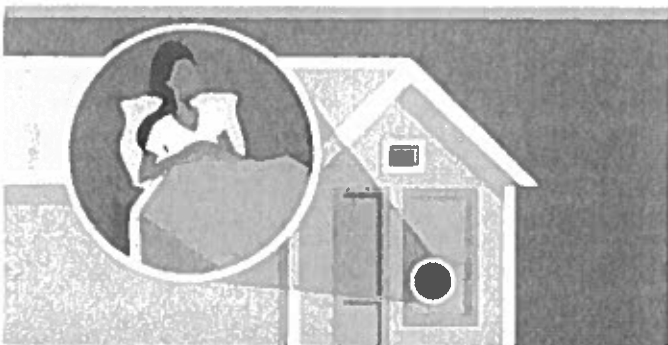
When in public, wear a
cloth face covering over
your nose and mouth.



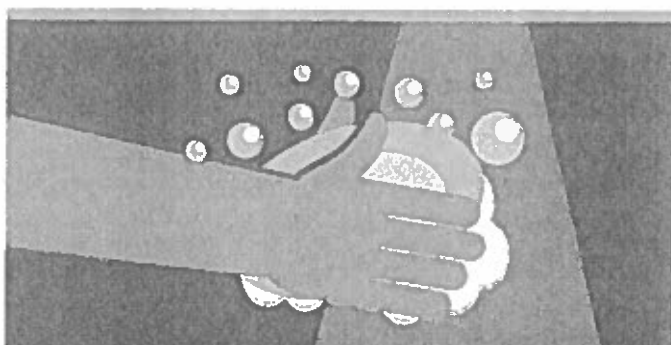
Do not touch your
eyes, nose, and mouth.



Clean and disinfect
frequently touched
objects and surfaces.



Stay home when you are sick,
except to get medical care.



Wash your hands often with soap
and water for at least 20 seconds.



[cdc.gov/coronavirus](https://www.cdc.gov/coronavirus)