

Incoming Fourth Grade Reading/Writing Assignment

A peaceful man, Mahatma Gandhi, believed that we should be the change we want to see in the world. This was well demonstrated when he helped India gain its independence without starting a revolution. Gandhi said, "In a gentle way you can shake the world."

Significant change throughout history has occurred as the result of the courage and commitment of individuals. Your summer assignment is to read one of the *Who Was*....books about Joan of Arc, Albert Einstein, Harriet Tubman, Abraham Lincoln, Thomas Edison, Rosa Parks, Mahatma Gandhi or any of the other of these books about people who have made a contribution to society.

After reading about this individual you are to write three paragraphs.

DIRECTIONS:

Paragraph 1: Explain who this person was and what time period in history they lived in.

Paragraph 2: Tell about the change they made and explain why this change took courage and commitment on their part.

Paragraph 3: If you could bring about one change in the world what would it be and how might you go about it?

Type your assignment using *Times New Roman*/14. Put a full heading at the top of the page as follows:

Name	Date
Sts. John & Paul	4 th Grade Summer Assignment

TIPS:

Indent each paragraph.

Write a minimum of 4 to 6 sentences for each paragraph.

Write in full sentences – no fragments allowed.

Use proper punctuation.

Edit your written work to make sure your spelling is correct and that your sentences make sense.

I CAN'T WAIT TO READ YOUR ASSIGNMENT!



You can do it!

Text Collections And Visual References

WANT LIST:

- ✓ Book Sets
- ✓ Reference Posters
- ✓ Flip Charts

Inspiring, Illustrated Biographies Introduce The Lives And Achievements Of 30 Historical Personalities

Each biography is complete with facts, interesting anecdotes, and compelling black and white illustrations. Sidebars on related topics, a timeline, and a bibliography enhance readers' understanding of each person. Perfect for readers who are beyond easy-to-read but not quite ready for long, detailed nonfiction.

• Three sets of softcover books.

• 10 books in each set, 544 by 7 1/2" x 10 1/2" pages each.

• Grades 3-7.

WHO WAS? BIOGRAPHY 30-BOOK SET

303460BGZ

Volume discount \$479.97



Name _____

Choose the best answer.

1. 9×5

- a. 35
- b. 40
- c. 45
- d. not given

6. $14 \div 2$

- a. 7
- b. 6
- c. 8
- d. 9

2. $18 \div 3$

- a. 4
- b. 6
- c. 8
- d. 9

7. Choose the standard form.
five thousand three

- a. 503
- b. 5030
- c. 5300
- d. 5003

3. Add mentally.

$46 + 8$

- a. 50
- b. 52
- c. 54
- d. 56

8. 6×7

- a. 36
- b. 48
- c. 42
- d. 54

4. In what place is the underlined digit?

289,057

- a. hundreds
- b. thousands
- c. ten thousands
- d. hundred thousands

9. What numerator would make this fraction equal to 1?

$\frac{?}{8} = 1$

- a. 1
- b. 2
- c. 4
- d. 8

5. 4×7

- a. 14
- b. 21
- c. 28
- d. 32

10. $36 \div 4$

- a. 6
- b. 8
- c. 9
- d. not given

Choose the best answer.

11. 8×6

- a. 32
- b. 46
- c. 54
- d. not given

16. $24 \div 4$

- a. 8
- b. 6
- c. 9
- d. 7

12. $35 \div 5$

- a. 6
- b. 7
- c. 8
- d. 9

17. Choose the fraction equal to 1.

- a. $\frac{1}{10}$
- b. $\frac{5}{10}$
- c. $\frac{10}{10}$
- d. not given

13. Choose the standard form.
seven thousand sixty

- a. 7006
- b. 7600
- c. 7060
- d. not given

18. Add mentally.

$57 + 7$

- a. 64
- b. 63
- c. 74
- d. 65

14. $63 \div 4$

- a. 13 R 1
- b. 15
- c. 14 R 7
- d. 15 R 3

19. 6×5

- a. 30
- b. 35
- c. 40
- d. 45

15. 7×9

- a. 56
- b. 54
- c. 63
- d. not given

20. $16 \div 8$

- a. 4
- b. 2
- c. 3
- d. not given

Choose the best answer.

21. 9×6

- a. 45
- b. 54
- c. 68
- d. 72

26. $63 \div 7$

- a. 8
- b. 9
- c. 6
- d. 7

22. Choose the range of this data.

9, 12, 12, 14, 18

- a. 9
- b. 12
- c. 13
- d. not given

27. 60.24

-17.28

- a. 42.06
- b. 53.96
- c. 42.96
- d. 52.96

23. $8 \div 8$

- a. 1
- b. 0
- c. 8
- d. not given

28. 7×8

- a. 42
- b. 56
- c. 62
- d. 64

24. 7×0

- a. 0
- b. 7
- c. 70
- d. not given

29. Which is greater than 6 meters?

- a. 500 mm
- b. 600 cm
- c. 60 dm
- d. 65 dm

25. Choose the angle shown.



- a. right
- b. acute
- c. obtuse
- d. not given

30. $81 \div 9$

- a. 9
- b. 8
- c. 7
- d. 6

Choose the best answer.

31. 4×8

- a. 32
- b. 36
- c. 42
- d. not given

36. $56 \div 7$

- a. 6
- b. 9
- c. 7
- d. 8

32. $36 \div 6$

- a. 8
- b. 7
- c. 6
- d. 4

37. 8×9

- a. 56
- b. 64
- c. 72
- d. 82

33. $74 \div 5$

- a. 12 R 4
- b. 15
- c. 14 R 4
- d. 1448

38. $40 \div 4 + 6 - 2$

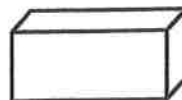
- a. 14
- b. 5
- c. 2
- d. not given

34. Choose the operation that should be done first.

$7 + 6 \times 6 - 3$

- a. add
- b. subtract
- c. multiply

39. How many vertices does this figure have?



- a. 6
- b. 8
- c. 10
- d. 12

35. A lunch package sells for \$5. How much would 8 lunch packages cost?

- a. \$35
- b. \$30
- c. \$45
- d. \$40

40. **Write/Draw**

Solve. Explain how you solved the problem.

A set of 9 books costs \$54. If each book costs the same amount, how much does one book cost?

Name _____

Incoming
4th Graders

Mark the best answer.

1. Which number means the same as $80,000 + 5,000 + 600 + 20 + 5$?

A 8,005,625
B 850,625
C 805,625
D 85,625

2. Look at the fraction model below.



Which choice gives the unit fraction for each part of the whole and the fraction of the whole that is shaded?

- A $\frac{3}{4}$
B $\frac{1}{8}, \frac{3}{8}$
C $\frac{1}{6}, \frac{3}{6}$
D $\frac{1}{4}, \frac{2}{4}$
3. Which list shows the numbers in order from least to greatest?
- A 3,546; 3,654; 3,564
B 3,564; 3,654; 3,546
C 3,546; 3,564; 3,654
D 3,654; 3,564; 3,546

4. Which shows 296 rounded to the nearest ten?

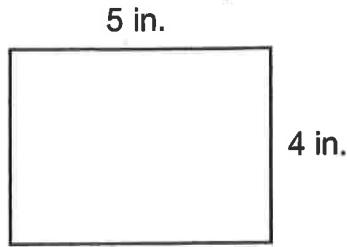
A 200
B 290
C 300
D 310

5. What fraction is shown on the number line?



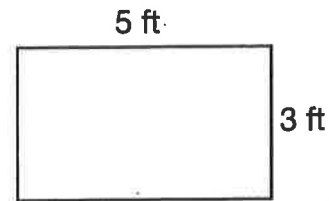
- A $\frac{1}{4}$
B $\frac{1}{2}$
C $\frac{3}{4}$
D $1\frac{1}{4}$
6. The cafeteria sold 128 ham sandwiches, 36 cheese sandwiches, and 45 salads. About how many sandwiches were sold?
- A 220
B 190
C 170
D 130

7. What is the perimeter of this shape?



- A 18 inches
B 18 square inches
C 20 inches
D 20 square inches
8. Last Saturday, Marge drove to the mountains. She drove 238 miles in the morning and 154 miles in the afternoon. How many more miles did she drive in the morning than in the afternoon?
- A 392 miles
B 328 miles
C 124 miles
D 84 miles
9. Which is the best estimate of the mass of a small dog?
- A 40 kilograms
B 4 kilograms
C 400 grams
D 40 grams

10. What is the area of this shape?



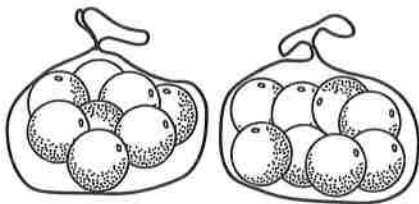
- A 16 square feet
B 16 feet
C 15 square feet
D 15 feet
11. Which number sentence describes the stamps below?



- A $3 + 4 = 7$
B $4 + 4 = 8$
C $3 \times 5 = 15$
D $3 \times 4 = 12$
12. Which fraction is equivalent to $\frac{6}{8}$?
- A $\frac{4}{5}$
B $\frac{3}{4}$
C $\frac{2}{3}$
D $\frac{1}{2}$

13. Miguel bought 2 bags of oranges. There are 8 oranges in each bag. Which number sentence shows how many oranges Miguel bought?

- A $8 - 2 = 6$
- B $8 + 2 = 10$
- C $2 \times 8 = 16$
- D $8 \div 2 = 4$



14. Carla is putting some pictures in an album. If she puts 6 pictures on each page, how many pictures are on 8 pages?

- A 48 pictures
- B 40 pictures
- C 15 pictures
- D 8 pictures

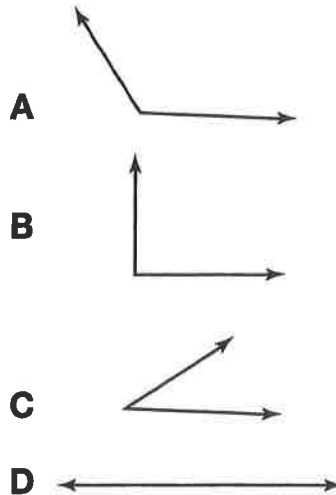
15. Look at the pictograph below. How many more students chose dogs as their favorite pets than cats?

Students' Favorite Pets	
Pets	Number of Votes
Cat	
Dog	
Fish	
Hamster	

KEY: Each equals 3 students

- A 4
- B 6
- C 12
- D 18

16. Which of the following is a right angle?



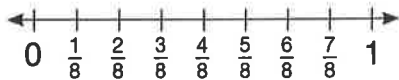
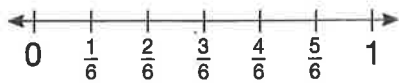
17. Which shape has four right angles and all sides equal in length?

- A Rectangle C Square
B Rhombus D Trapezoid

18. Which of the following number sentences does **NOT** belong in the same fact family?

- A $4 + 8 = 12$ C $32 \div 4 = 8$
B $4 \times 8 = 32$ D $32 \div 8 = 4$

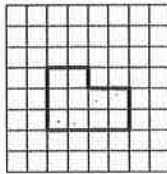
19. Look at the number lines below.



Which is a correct statement?

- A $\frac{3}{6} = \frac{5}{8}$ C $\frac{3}{6} < \frac{5}{8}$
B $\frac{3}{6} > \frac{5}{8}$ D $\frac{3}{6} < \frac{3}{8}$

20. What is the area of the irregular figure?



- A 20 square units
B 14 square units
C 12 square units
D 10 square units

21. How many wheels are on 4 wagons?

Wagons	Wheels
1	4
2	8
3	12
4	?

- A 20 C 16
B 18 D 14

22. Which division sentence is shown by the repeated subtraction?

$$27 - 9 = 18$$

$$18 - 9 = 9$$

$$9 - 9 = 0$$

- A $27 \div 9 = 4$
B $27 \div 9 = 3$
C $18 \div 2 = 9$
D $36 \div 4 = 6$

23. Which value for b will make the equation true?

$$15 + b = 22$$

- A $b = 2$ C $b = 7$
B $b = 6$ D $b = 9$

24. Tom arrived for a meeting at 8:55 A.M. He was 25 minutes late for the start of the meeting. At what time did the meeting start?

- A 8:45 A.M. C 8:25 A.M.
B 8:30 A.M. D 8:20 A.M.