

**City School District of New Rochelle  
District-wide School Safety Plan**

**Introduction:**

On July 24, 2000, Governor George E. Pataki signed into law the most comprehensive legislative plan in the nation, entitled Project SAVE (Safe Schools Against Violence in Education), to promote a safer and more effective learning environment within New York State's schools. Project SAVE is a comprehensive planning effort that addresses prevention, response, and recovery with respect to a variety of emergencies in each school district and its schools. Districts are required to develop a district-wide school safety plan designed to prevent or minimize the effects of serious violent incidents and emergencies and to facilitate the coordination of the district with local and county resources in the event of such incidents or emergencies. The district-wide plan is responsive to the needs of all schools within the district and is consistent with the more detailed emergency response plans required at the school building level.

**Purpose:**

The New Rochelle City School District has developed this District-Wide School Safety Plan to prevent and/or minimize the effects of serious violent incidents and emergencies, to respond effectively to crises and to facilitate coordination with local resources in the event of such incidents or emergencies. This District Safety/Emergency Response Plan was developed pursuant to NYS Education Law §2801-a and 8 NYCRR §155.17. The District-wide School Safety Team was charged with the initial development of this District-Wide School Safety Plan and the ongoing review and revision of the plan.

**Identification of the District-Wide School Safety Team**

The City School District of New Rochelle has created a District-wide School Safety Team consisting of, but not limited to, representatives of the School Board, teachers, administrators, parent organizations, school safety personnel, and other school personnel. The team members are:

Richard E. Organisciak	Superintendent
Dr. Diane Massimo, or designee	Assistant Superintendent, Curriculum, Instructional Support & Funded Programs
Bruce Daniele	Director of Security
John Gallagher	Director Environmental Services
Ellen Garcia	Safe Schools
Joseph Williams	School Administrator- A & S President
Joseph Starvaggi, AP, New Rochelle HS	School Administrator-Secondary Level
Martin Daly, or his teacher designee	Teacher, FUSE President
Victor Cristiano	Carpenter, FUSE
Adrienne Weiss-Harrison	Director of Health Services
Linda Manley	PTA Representative
Deirdre Polow; Rachel Relkin	Board of Education Representatives
Emma Gardephe	Student Representative
Commissioner Patrick Carroll, or his designee	NRPD Representative
Commissioner Louis Demeglio, or his designee	NRFD Representative

## **Identification of School Building Safety Teams**

Each building principal shall appoint members of the building safety team which should include but not be limited to representatives of teacher, administrator, school safety and other school personnel, community members, and local first responders.

## **Operational Concepts**

The District-wide School Safety Plan shall be directly linked to the individual Building-level Emergency Response Plans for each school building. Protocols reflected in the District-wide School Safety Plan will guide the development and implementation of individual Building-level Emergency Response Plans.

In the event of an emergency or violent incident, the initial response to all emergencies at the individual school will be coordinated by the School Building Safety Team.

Upon the activation of the School Building Safety Team, the Superintendent of Schools or his/her designee and the Director of Security will be notified and, where appropriate, local emergency officials will also be notified.

Efforts may be supplemented by County and State resources through existing protocols.

## **Plan review and public comment:**

This plan shall be reviewed and maintained by the District-wide School Safety Team and reviewed on an annual basis on or before July 1 of each year.

Pursuant to Commissioner's Regulation 155.17 (e)(3), this plan will be made available for public comment 30 days prior to its adoption. The district-wide and building-level plans may be adopted by the School Board only after at least one public hearing that provides for the participation of school personnel, parents, students, and any other interested parties. The plan must be formally adopted by the Board of Education.

While linked to the District-wide School Safety Plan, School Building Emergency Response Plans shall be confidential and shall not be subject to disclosure under Article 6 of the Public Officers Law or any other provision of law, in accordance with Education Law Section 2801-a.

Full copies of the District-wide School Safety Plan and any amendments will be submitted to the New York State Education Department within 30 days of adoption. Building-level Emergency Response Plans will be supplied to both local and State Police within 30 days of adoption.

**Vital Educational Agency Information**

Student enrollment in New Rochelle City Schools: 10,835  
 Superintendent can be reached at 576-4200/4201  
 School Security Director can be reached at 576-4186  
 Director of Pupil Personnel can be reached at 576-4274

School and street address	Principal	Telephone Contact	Student Enrollment	Number of staff
New Rochelle High School, 265 Clove Road	Donald Conetta Principal	914-576- 4502,4503	2862 408 Extended Day	510
Campus School 50 Washington Ave.	Joel Fridovich Program Administrator	576- 4393,4397	84	18
Albert Leonard Middle School, 25 Gerada Lane	Dr. Velma Whiteside, Principal	576- 4339,4340	1223	173
Isaac Young Middle School, 270 Centre Street	Dr. Anthony Bongo, Principal	576-4360	1158	176
Barnard Early Childhood Center, 129 Barnard Road	Patricia Lambert Principal	576-4386	568	95
Columbus Elementary School, 275 Washington Ave.	Ms. Sonia Nuñez Principal	576-4400	841	124
George B. Davis Elem. School, 80 Iselin Drive	Mr. William Harrell, Principal	576-4420	667	113
Jefferson Elementary School, 131 Weyman Avenue	Ms. Kim Nieves, Principal	576-4430	650	105
Trinity Elementary School, 180 Pelham Road	Mr. Anthony DiCarlo, Principal	576- 4440/4441	850	143
William B. Ward Elem. School, 311 Broadfield Rd.	Mr. Franco Miele, Principal	576-4450	1011	150
Daniel Webster Elem. School, 95 Glenmore Drive	Mr. Joseph Williams, Principal	576-4460	543	74
Board of Education City Hall 515 North Avenue	Richard Organisciak, Superintendent	576-4200	0	92
Cliff Street-Grounds	Mr. John Gallagher	576-4352	0	9
Grove Street-Mechanics	Mr. Anthony Rigos	576-4475	0	11

**Identification of potentially dangerous/hazardous sites**

1. District personnel have identified and located areas of potential emergencies in and around each building .These sites have been mapped or outlined for each building.
2. Fire inspection done annually by New Rochelle Fire Department with District staff
3. Individual School Safety Plans have identified information such as electrical panels, gas lines, and water supply lines.
4. Potentially dangerous sites are checked regularly by district staff. An annual visual inspection is done by an outside facilities management group with a comprehensive inspection done every five years. These include but are not limited to:
  - a. Systems Sites (Work order system used to schedule repairs & address deficiencies)
  - b. Environmental Problem Sites ( potential flooding areas, roof leaks, sidewalks, heating and cooling systems, sidewalks, mold, and roof top units)
  - c. Site considerations-New Rochelle High School
    1. List of chemicals used in Science labs updated each year
    2. Fine Arts Department-kilns
    3. Pool-chlorine storage
    4. Kitchen-cooking, grease storage
  - d. Site consideration-Cliff Street
    1. Storage and removal of used oil and other hazardous materials
5. In the case of Central Administration, the following are identified as potential issues that would impair normal operations:
  - a. Power failure/loss of utilities
  - b. Very busy street: North Avenue
  - c. Location next to police station and municipal offices
  - d. Off-site considerations-reliance on City of New Rochelle officials

**District Resources**

District resources which may be available for use during an emergency:

School security	576-4186
District Physician/Health Services	576-4264/4265
Environmental Services	576-4222/4223
Pupil Personnel Services	576-4274/4275

AED trained staff located in City Hall:  
Dr. Adrienne Weiss-Harrison, Medical Director/School Physician  
Barbara Ehrenreich, Nurse Practioner  
Derrick Buford, Custodian

**Prevention/Intervention**

The City School District of New Rochelle has implemented strategies for prevention of violent incidents and for identifying and reducing risks, as well as anticipating and responding to emergencies including weather or loss of utilities or services

1. Training will be provided during Superintendent’s Conference days, faculty meetings, and other after school or summer periods.

2. All security staff and general school aides are required to annually participate in 8 hours of approved professional training related to their job to maintain their NYS Security license. Other training topics include:
  - a) Non-violent crisis intervention training
  - b) Bullying prevention
  - c) Incident reporting
3. School building safety and security equipment
  - a) All district schools have alarm systems
  - b) Surveillance cameras are used in the secondary school buildings
  - c) All school buildings have safety equipment to assist in the event of an weather emergency or evacuation-- hand- held stop signs, reflective vests, flashlights, LED lanterns, weather radio
  - d) All elementary school buildings have keyless entry and buzzer/camera systems on the main door.
  - e) Evacuation of students/staff with mobility issues.
4. All schools have a range of programs to promote a positive school climate and positive youth development. Principles of civility and responsible citizenship are also integrated throughout the pre-k-Grade 12 curriculum. The following programs are a sample of the programs implemented to address behaviors and risk factors that can lead to violence.
  - a) RtI (Response to Intervention) and PBIS (Positive Behavioral Interventions & Supports)
  - b) Olweus Bullying Prevention Program
  - c) Peer Mediation
  - d) Child Lures
  - e) BEST Buddies
  - f) Character Education
  - g) SADD (Students Against Destructive Decisions)
5. All schools have at least one AED with locations posted at entrances to buildings. Nurses, Physical Education teachers, coaches and select custodians are trained in CPR/AED.
6. Staff members wear identification badges so they can readily be identified. Entrance to the Board of Education/administrative offices is secured by a trained security guard and written visitors records are kept.
7. Each school building uses a sign in/sign out process with name tags for visitors to control the access to buildings.
8. The following proactive security measures have been implemented:
  - a) All schools have monitored entrances
  - b) Visitors are required to carry Identification, and to sign in and out.
  - c) All schools will educate students, staff and parents about the importance of school safety.
  - d) All schools will hold drills that help promote school safety.
    - Fire-12/year
    - Lock Down (Intruder)-minimum of 3/year
    - Lock Out (Environmental Danger)-once/year
    - Evacuation (minimum of 1 per year)
    - Early Dismissal-once/year
    - Tabletop Exercises
    - Shelter in Place
  - e) Each school will maintain records of all School Safety Team Meetings and building drills and report this information annually to the District Safety Team.
  - f) All schools will develop and operate reporting, referral and counseling procedures designed to identify and work with potentially aggressive and violent students.

**Training, Drills, and Exercises**

1. All security staff and general school aides hold NYS Security Guard licenses. State law requires training, fingerprinting and background checks for all licensed Security Guards.
2. All security personnel are hired through the civil service process with job descriptions and acceptable training and experience outlined in the employment postings. Job descriptions are included in **Appendix 1**.
3. As required by Section 807 of the Education Law, each school principal must instruct and train their students on how to exit the building in the shortest possible time without confusion or panic. The instruction must include drills or rapid dismissals. Twelve (12) fire drills must be held each school year, eight of which shall be held prior to December 1. Instruction must be given to pupils in the procedure to follow in the event that a fire occurs during the lunch period, unless at least one drill is held during the lunch period. Summer schools must hold at least two drills, one of which must be held during the first week of the summer session.
4. As required by SAVE legislation (155.17), each school district shall, at least once every school year, conduct one test of its emergency plans, including sheltering or early dismissal, not to occur more than 15 minutes earlier than the regular dismissal.

**Responding to Threats and Acts of Violence**

- A. The district has developed the following safety and security procedures to protect students, staff and visitors from indirect and direct threats and acts of violence.
  1. Reporting of threats and acts of violence to school authorities
    - a. Students are required to inform school staff about any threat or acts of violence to themselves, others or property.
    - b. Staff are required to inform administration of any threat of violence to students, themselves, others or property.
    - c. Building principals are required to notify the Superintendent's office and Director of Security.
    - d. Parents and visitors are encouraged to tell school staff about any indirect or direct threats and acts of violence towards students, themselves, others or property.
    - e. Students, staff, parents and others will be educated about the importance of reporting threats and the procedures of reporting.
  2. Investigating threats and acts of violence
    - a. The building administrator will investigate reported threats and acts of violence and will make the determination of disciplinary measures consistent with the Code of Conduct.
    - b. Serious acts will require the involvement of police personnel. (violent offenses in accordance with SAVE requirements)
    - c. Chronic offenders may require a behavior intervention plan, close monitoring, and police involvement.
    - d. Threats placing students, staff and others in imminent danger require an immediate call to the police.
    - e. Allegations of bullying, harassment, and discrimination should be reported to the Dignity Act Coordinator at the building level for investigation.

- f. All schools will develop and operate reporting, referral and counseling procedures designed to identify and work with potentially aggressive and violent students through Pupil Personnel Services staff and/or building based teams.
3. Report Incidents
- a. School administrators must keep record of serious threats and acts of violence and report them annually to the state through the VADIR system.
  - b. Incidents of violence, serious threats, intimidation, etc., may require involvement of the police.
  - c. Ordinarily district and building administrators are authorized to call the police to respond to the threat or acts of violence. In case of imminent danger, any staff member is authorized to call 911.
  - d. Public Information office will handle all contacts with media.
  - e. Public Information office will provide information to building staff that can be given to parents and concerned others.
  - f. As required by SAVE legislation and the Dignity for All Students Act, incidents of violence as well as material cases of bullying, harassment, and discrimination will be reported to New York State on an annual basis through the VADIR( Violent and Disruptive Incident Report) and Report of incidents concerning school Safety and the Educational Climate.
4. Removing Violent Individuals
- a. Aggressively dangerous and violent students should only be restrained by qualified staff (SCIP-Therapeutic Crisis Intervention certified). Police or Crisis Team (Saint Vincent’s Hospital Behavioral Health Evaluation & Referral Services) should be called to remove the student.
  - b. Violent adults are to be reported immediately, the authorities called and only removed by police.
  - c. Schools should be in **lock down** mode when violent people are in the school.
  - d. Schools should be in **lock out** when violent/dangerous people or situations occur around the school.
5. Identification of appropriate responses to emergencies
- a. The Procedures Manual has been developed to provide consistent responses to emergencies across the school district. This manual includes guidance as to when to contact the police or other emergency services.(**Appendix 2**) The following emergency procedures are outlined:
    - 1. Abduction/Kidnapping
    - 2. Bomb Threat
    - 3. Bus Accident
    - 4. Criminal Offenses (Suspected/Potential)
    - 5. Death of Student or Staff
    - 6. Evacuation
    - 7. Fire/Explosion in the Building
    - 8. HAZMAT-Hazardous Materials
    - 9. Intruder/Dangerous Person

10. Medical Emergencies (injuries and illness)
11. Severe Weather-Shelter in Place
12. Suicide
13. Violent Behavior-Student
14. Violent Behavior-Large Group Altercation
15. Terrorism

- b. The School Health Services Department has developed and distributed the following resources: Health Services Manual; Procedures for Administration of Medication in School and Nursing Procedures and Tasks Performed in School; First Aid Manual; and the Emergency “To Go” Bag. The NYSED School Health Guidelines binder is also available as a resource and located in the Health Services Department and in each School Health Office.

Descriptions of these materials as well as a current list of Health Services Department staff and a listing of staff who have received CPR/AED trained staff are presented in **Appendix 3**.

- c. The Pupil Services department revised and distributed the **Crisis Intervention Manual** in 2010 which provides a guide for school administrators and pupil services personnel who are responsible for direct and indirect provision of supports and services in times of crisis. A description of this manual as well as a current list of District Social Workers and School Psychologists can be found in **Appendix 4**.

### **Communication with Others**

- A. Arrangements for obtaining assistance during emergencies from local emergency organization, agencies and local government agencies.
  1. City School District of New Rochelle has worked with police, fire, EMS, and governmental agencies to obtain assistance during emergencies. Providers have given approval to the City School District of New Rochelle to rely on local personnel, resources and facilities in emergency situations. Our plan provides for accessing emergency mental health services in the event of an emergency or violent incident from Southern Westchester BOCES, Westchester County, and regional mental health agencies.
  2. Local list of governmental agencies and community services:
    - City of New Rochelle- Noam Bramson, (914) 654-2150
    - New Rochelle Fire Chief-Louis DiMeglio, (914) 654-2212
    - New Rochelle Police Commissioner, Patrick J. Carroll, (914) 654-2300
    - New York State Police Troop K, (845) 677-7300
    - Westchester Disaster/Emergency Services (914) 231-1900
    - Westchester County Health Department (914) 813-5000



- Westchester Co. Dept. of Community Mental Health (914) 995-7485
- American Red Cross/Westchester (914) 946-6500
- Con Ed emergency: (800) 752-6633
- Poison Control Center: (800) 222-1222
- BOCES Health, Safety and Risk Management: (914)345-8500 Isabel Burk
- New Rochelle Youth Bureau (914) 654-2045
- St. Vincent's Hospital Behavioral Health Evaluation & Referral Services (888) 689-1684 or (914) 925-5320

**B. Obtaining Advice and Assistance from Government Officials**

1. The arrangements for obtaining assistance during emergencies from local emergency organizations, agencies and officials responsible for implementation of Article 2-B of the Executive law have been made.
2. Key officials in local government that can help to develop plans and assist in emergency situations are listed above.

**C. System for informing all educational agencies of a disaster or emergency; certain information about each educational agency located within the City School District of New Rochelle's boundaries.**

1. The Superintendent or his designee shall inform all educational agencies within the City School District of New Rochelle's boundaries of disaster.
2. The list of educational institutions located within the district, the school population and staff numbers, their transportation needs and cell phone, home phone and personal e-mail address numbers of key officials of each school will be kept updated annually.
3. The procedure to inform each school in the event of an emergency situation is, the superintendent will authorize emergency calls to each educational agency.

**D. Procedures for contacting parents, guardians and persons in parental relation to the students of the district in event of a violent incident or early dismissal.**

1. The district procedure for early dismissal is as follows:
  - a. Superintendent or his/her designee decides on an early dismissal.
  - b. Transportation Director is notified to supply busses.
  - c. Central and building administrators are informed.
  - d. Staff and students are informed of closing.
  - e. Parents are notified of the planned early dismissal through multiple contacts (District Calendar, Blackboard ConnectEd message alert system, District and School web sites, Emergency Outreach messages, text messages)
  - f. Parents are notified about unplanned early dismissal or violent incident through the ConnectEd message alert system, parents of all students will receive a phone call to regular and emergency phone numbers. When phone calls fail to contact the parent or emergency number, the elementary

and middle school student will remain under the supervision of school personnel until parents are notified and pick up the student, or the regular end of the school day, whichever comes first.

- g. Parents of high school students are notified through ConnectEd message alert system and then students are dismissed from school.
  - 2. Parents will receive information about the threat or act of violence that determined an early dismissal in their child’s school as soon as is practical. This information is limited to information the school is legally permitted to disclose.
- E.** Procedures for contacting parents, guardians and persons in parental relation to the students of the district in event of a school cancellation due to weather or other emergency prior to the school opening.
- 1. Parents are notified through multiple contacts (Blackboard ConnectEd message alert system-phone/email messages; District and School web sites; messages posted on District Twitter and Facebook page; announcements through local media; and NRED-TV).

**Leadership: Incident Command**

Effective teams require clear leadership and chain of command. Congruent with the federal Incident Command System the District has designated the Superintendent as the Incident Commander. This leadership role can be delegated when necessary, to a “designee.”

**Incident Command Post**

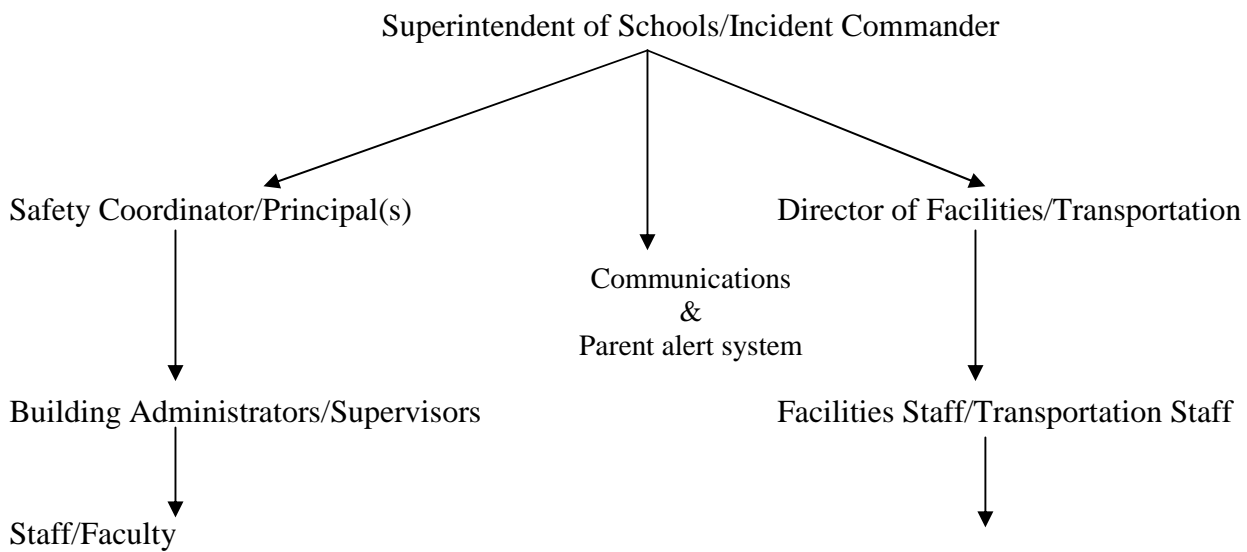
**Primary:** Superintendent/designee                      **Secondary:** Director of Security  
 (Command Post should have access to multiple telephone lines, electric power, water, PA system if possible, maps/plans, portable 2 way radios, megaphones, etc.)

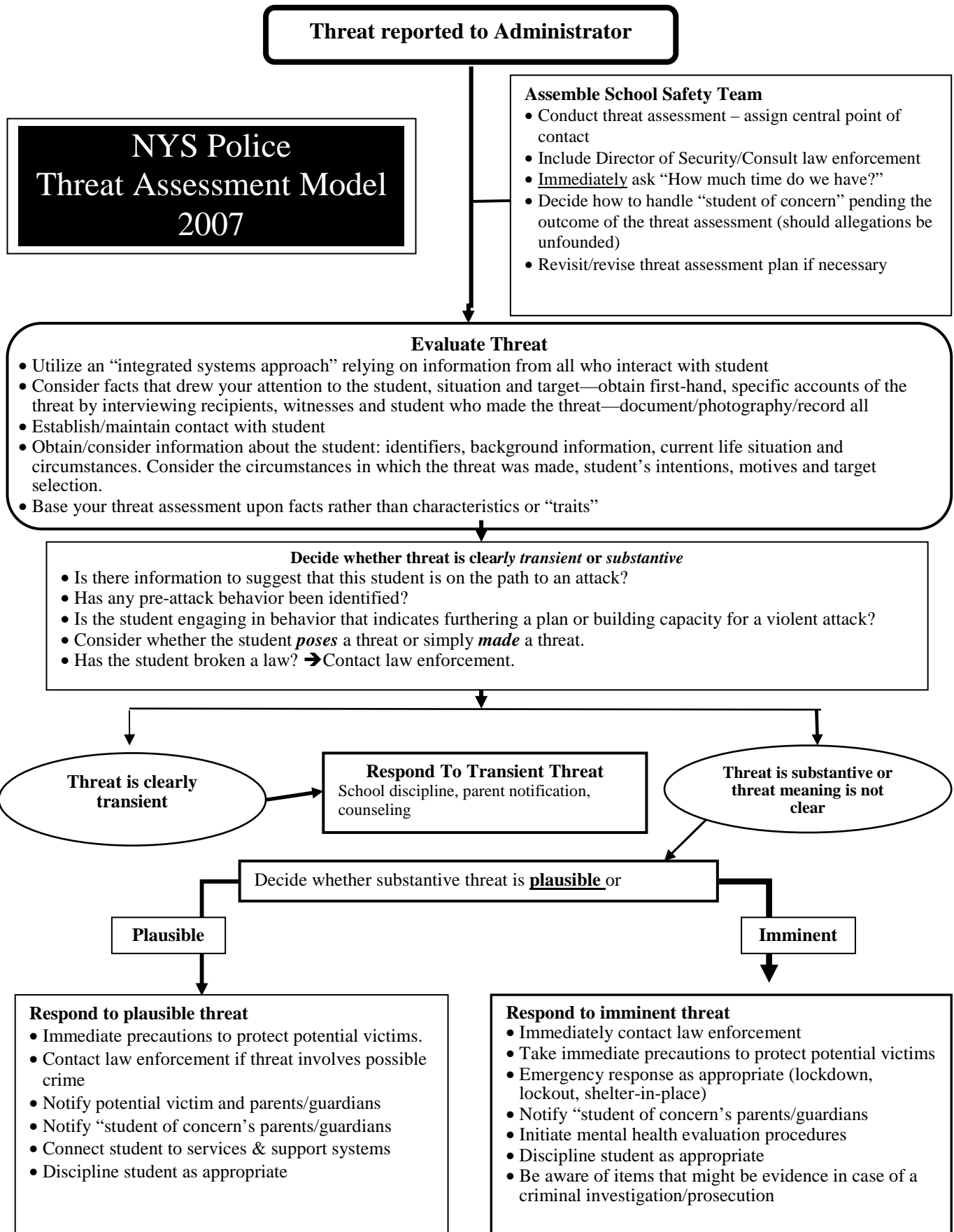
**Incident Command System: Roles/Responsibilities**

Incident Commander	Superintendent of Schools/Building Principal/Assistant Principal
Safety Officer	Director of Security
Deputy Incident Commander	Cabinet Members
Public Information Officer	District Communications & Media Specialist
Planning and Intelligence	Principals and Director of Curriculum/Instruction
Operations	Assistant Superintendent of Business or designee
Recorder	District Clerk/Administrator’s clerical
Logistics	Director of Environmental Services & Grounds/Transportation Coordinator
Administration/Finance	Assistant Superintendent of Business or designee
Local Law Enforcement	New Rochelle Police Department
Emergency Response	Fire Department/ Sound Shore Hospital

**Incident Commander (IC):** Sets the incident objectives, strategies, and priorities; has overall responsibility for the incident response; and coordinates and manages all ICS functions.

**Decision Making Process**





Appendix 1 Job Descriptions for Security Department

Appendix 2 Emergency Procedures Manual

Appendix 3 Health Services Department Resources- Information, list of Medical Department staff & list of CPR/AED trained staff

Appendix 4 Pupil Services Resources-Description of Crisis Intervention Manual & list of District Social Workers and School Psychologists

## Appendix 1-Job Descriptions for Security Department

### DIRECTOR OF SECURITY City School District

**DISTINGUISHING FEATURES OF THE CLASS:** This work involves responsibility for directing, planning and implementing a comprehensive security program for a school district. Work is performed under the administrative direction of a higher ranking employee with considerable leeway allowed for the exercise of independent judgment in implementing the general policies and objectives of the security program. General supervision is exercised over the work of security employees; does related work as required.

**EXAMPLES OF WORK:** (Illustrative only)

Develops and administers organizational and administrative procedures designed to maintain program activities in an efficient and effective manner;

Trains security personnel in conducting surveillance and investigations;

Responsible for the recruiting, training and evaluation of subordinate employees; i.e., general school aides; Conducts all in-house investigations relative to larcenies, burglaries, assaults, drugs, etc;

Oversees the investigation of all incidents on school property involving school personnel, students or general public;

Oversees, coordinates and directs the planning, development and implementation of a security program for the City School District;

Plans and directs a regular program of safety and loss prevention, inspections of school property;

Reviews and keeps abreast of federal, state and local policies, rules and regulations which may affect the security program;

Ensures compliance with federal, state and local laws, rules and regulations regarding school property and facilities;

Prepares reports in matters relating to security, safety, and drug usage and loss prevention, as needed;

Establishes and interprets policies and procedures for all activities undertaken by school security personnel;

Will assume other duties as directed by the Board, Superintendent and/or Assistant Superintendents.

**REQUIRED KNOWLEDGES, SKILLS AND ABILITIES:** Thorough knowledge of modern principles and practices of security, law enforcement, drug awareness and prevention, safety and loss prevention; thorough knowledge of laws, rules and regulations governing actions on school property; good knowledge of scientific methods of crime detection and criminal identification; good knowledge of the proper methods and procedures used in making investigations, analyzing, find and implementing corrective action; good knowledge of modern principles of supervision and management; ability to establish and maintain an effective relationship with the public, employees, department heads, school personnel; law enforcement agencies; ability to instruct and direct subordinates in security, loss prevention and safety procedures; ability to express oneself clearly and concisely both orally and in writing; ability to deal courteously and tactfully with the public in enforcing laws or rules; resourcefulness; . initiative; integrity; neatness of appearance and physical condition commensurate with the demands of the position.

**ACCEPTABLE TRAINING AND EXPERIENCE:**

A) Graduation from a regionally accredited New York State college or university with a Bachelor's degree in criminal justice, police science of a closely related field of study structured to prepare individuals for work in the field of law enforcement;

**AND** four years of work experience in law enforcement, two of which shall have been in a supervisory capacity; **OR**

B) Graduation from a regionally accredited New York State college with an Associate's degree as described in (A) above;

**AND** six years of work experience in law enforcement, three of which shall have been in a supervisory capacity; **OR**

C) Graduation from high school or possession of an equivalency diploma issued by the State Education Department of New York; **AND**, Eight years of the experience noted in (A) above, four of which shall have been in a supervisory capacity.

Amended 1/28/97

**SCHOOL SECURITY OFFICER**  
**CITY SCHOOL DISTRICT**

**DISTINGUISHING FEATURES OF THE CLASS:** Under the direct supervision of the Director of Security performs various duties related to the safety, health and welfare of the students and the security of the school building. This is responsible work calling for the exercise of good judgment and exceptional ability to relate well with children. A School Security Officer must be firm yet courteous and congenial in exercising his/her influence on students. The work is performed in accordance with the regulations set by the Director of Security. May be designated to assume the responsibilities of the Director of Security in his/her absence; does related work as required.

**EXAMPLES OF WORK: (Illustrative only)**

Assists the Director of Security in all in-house investigations relative to larcenies, burglaries, assaults, drugs, etc.;

Assists in the investigations of all incidents on school property involving school personnel, students, or general public;

Instructs regularly scheduled programs of safety and loss prevention inspections of school property set forth by the Director of Security;

Maintains effective working relationships with the school personnel, law enforcement agencies and the public;

Reviews and keeps abreast of federal, state, and local policies, rules and laws which may affect the security program;

Enforces school regulations relating to student behavior as established by the school principal;

Checks school building before students report to school and at the end of the day to ensure that no unauthorized individual is on the premises;

Assists in supervision of cafeterias and corridors;

Participates in conference with parents when necessary;

Participates in meetings with law enforcement agents and represents school district when required at hearings;

Assists school staff in all matters relating to discipline;

Prevents the admittance of unauthorized persons.

**REQUIRED KNOWLEDGES, SKILLS, AND ABILITIES:** Ability to be firm yet courteous with children; ability to relate well with children; through knowledge of modern principles and practices of security, law enforcement, drug awareness and prevention, safety and loss prevention; through knowledge of law, rules and regulations governing actions on school property; good knowledge of scientific methods of crime detection and criminal identification; good knowledge of the proper methods and procedures used in making investigations, analyzing, finding and implementing corrective action; ability to carry out directives from the Director of Security in security, loss prevention and safety procedures; physical condition commensurate with the demands of the position.

**ACCEPTABLE TRAINING AND EXPERIENCE:**

Completion of high school or possession of an equivalency diploma issued by the State Education Department of New York plus two (2) years of experience in a public or private law enforcement agency and some experience working with children

**Amended 8/27/96**

**GENERAL SCHOOL AIDE**  
**CITY SCHOOL DISTRICT**

**DISTINGUISHING FEATURES OF THE CLASS:** Under the direct supervision of the School Security Officer and a building principal, performs various duties related to the safety and welfare of the students and the school building. This is responsible work calling for the exercise of good judgment and ability to relate well with children. A General School Aide must be firm yet courteous and congenial in exercising his/her influence on students. The work is performed in accordance with the regulations set by the principal of the school; does related duties as required.

**EXAMPLES OF WORK:** (Illustrative only)

Assists in promoting regular class attendance by checking on students reported not in class, but on the school premises;

Controls entry in and out of the building and maintains entry and exit log;

Assists in keeping order in cafeterias, corridors and common areas of the school premises;

Participates in meetings with school officials and local government agencies and at related hearings;

Tours school building and grounds, including lavatories and parking areas, to prevent misuse of school property by students;

Provides security at sporting events and other extracurricular events;

Assists the police department when needed to maintain order outside the building.

**REQUIRED KNOWLEDGES, SKILLS AND ABILITIES:** Good general intelligence; ability to be firm yet courteous with children; ability to relate well with children; command of the English language; alertness; tact and courtesy; good judgment; honesty and integrity; sense of responsibility; neatness of appearance and physical condition commensurate with the demands of the position.

**ACCEPTABLE TRAINING AND EXPERIENCE:** Graduation from high school or possession of an equivalency diploma issued by the State Education Department of New York; **AND** Two years of full time paid experience working with children in a public or private facility; **OR** Two years of full time paid experience 'as a security guard.

**SPECIAL REQUIREMENTS:** Possession of a New York State Security Guard License prior to appointment.

**Amended 5/24/05**



**Appendix 2: Emergency Procedures Manual-** This District developed template provides an outline of procedures to be used at each School Building. The introduction section and evacuation directions are specific to each school building.

Specific emergency procedures including plans for internal and external communication for handling the following situations:

- Abduction
- Bomb threat
- Bus Accident
- Criminal Offenses (suspected/potential)
- Death of a student/staff
- Evacuation procedures
- Fire/Explosion in the building
- Hazardous Materials
- Intruder-Dangerous Individual in school building/school environment
- Medical Emergencies
- Severe Weather-shelter in place
- Suicide (threats and/or attempts)
- Terrorism
- Violent Behavior of a Student
- Violent Behavior-Large Group Altercation

## **Appendix 3- Health Services Department Resources**

### **Health Services Manual**

This manual, published in 2008, serves as a resource for School Nurses. The manual developed by a committee consisting of the Medical Director, Nurse Practitioner, School Nurses, and the Principal Clerk. Each section has a white page with text describing Department, District and State Procedures and blue attachments consisting of forms and other resources. The manual was distributed to the Superintendent and Cabinet; PPS Leadership Team, Public and Private School Principals; and to Public and Private School Health Offices. The Table of Contents is found on **page 20** .

### **“Procedures for Administration of Medication in School and Nursing Procedures and Tasks Performed in School”**

This manual, published in 1997, revised and redistributed most recently in 2011, serves as a resource for School Nurses. The manual was developed by a committee consisting of the Medical Director, Pediatric Nurse Practitioner, and School Nurses. It outlines the guidelines necessary for students to receive health practitioner prescribed prescription and over the counter medications in school. In addition, it outlines the guidelines for non-patient specific medication administration of oxygen and epinephrine for emergency situations. This manual is an extension of the guidelines mandated by the New York State Education Department. The manual was distributed to the Superintendent and Cabinet, PPS Leadership Team, Public and Private School Principals, and to Public and Private School Health Offices. The Table of Contents is found on **page 21**.

### **First Aid Manual**

This manual, initially published in 2002, and updated in 2009, serves as a resource for Teachers and Staff. The manual was developed by a committee consisting of the Medical Director, Nurse Practitioner, School Nurses, and the Principal Clerk. The information includes guidelines for a variety of medical conditions, emergencies, acute and chronic injuries and illnesses.

The manual is located in each School Health Office, Main Office, classroom, and on the eChalk District Resources/Health Services Department web page. The manual is distributed to new teaching staff at the beginning of each school year. Staff members are informed that the 2009 updated information is published on the web page. The Table of Contents for the manual is found on **page 22** and is arranged in alphabetical order for easy access.

### **Emergency “To Go” Bag**

The Emergency “To Go” Bag is located in each School Health Office and the Health Services Office. The bags were developed in 2007. The bag contains first aid supplies and emergency medications that may be needed in case an emergency occurs outside of the school building. The School Nurse is responsible for taking the bag out of the building during fire drills, emergency drills, and any school emergency in which students and staff are evacuated.

The School Nurse is responsible for making sure all supplies are in the bag and that the expiration dates have not been reached. The Health Services Offices resupplies the Health Offices as needed. The contents of the Emergency “To Go” Bags are outlined on **page 23**.

## **NYSED School Health Guidelines Binder**

This binder was assembled in July 2003 by the Health Services Office and serves as a resource for the Health Services Department and School Health Offices. It outlines the policies, procedures, and guidelines that the New York State Education Department requires of school districts and their Health Offices. The information is categorized for easy access to the information.

The manual is located in the Health Services Department and each School Health Office. The Table of Contents for the manual follows:

- Health Appraisals
- Pre-Kindergarten Resource Manual
- Hearing Screening
- Vision Screening
- Scoliosis Screening
- Immunizations
- Communicable Diseases
- Communicable Diseases Child Care
- Medications in Schools
- Non-Patient Specific Orders
- Emergency Procedures
- Selection Classification
- AEDs
- Nursing Tasks
- Health Service Personnel
- Records Retention
- Diabetes/Glucagon

**HEALTH SERVICES MANUAL**

SCHOOL HEALTH SERVICES  
AED'S - AUTOMATIC DEFIBRILLATORS  
ANNUAL REPORT  
ASSESSMENT / TRIAGE / NURSING TREATMENT OF STUDENTS AND STAFF  
ASTHMA  
BOARD OF EDUCATION POLICIES AND PROCEDURES  
BUDGET / EQUIPMENT / SUPPLIES  
CARE PLANS / INDIVIDUAL HEALTH CARE PLANS / MEDICAL MANAGEMENT PLANS  
CHILD STUDY TEAM / PUPIL PERSONNEL SERVICES TEAM / INSTRUCTIONAL SUPPORT TEAM  
COMMUNICABLE DISEASES / OUTBREAK NOTICES  
CONFIDENTIAL LIST  
CPS – CHILD PROTECTIVE SERVICES  
CRISIS MANUAL  
DENTAL  
DEPARTMENT MEETINGS / FACULTY MEETINGS / CASE CONFERENCES  
DIABETES  
EATING DISORDERS  
EDUCATION LAW – ARTICLE 19, §900  
EMERGENCY “TO GO” BAGS  
FIRST AID MANUAL  
FOOD ALLERGIES/BEE STING ALLERGIES/EPIPEN®  
FORMS  
FUNCTIONAL BEHAVIORAL ASSESSMENT (FBA) / BEHAVIORAL INTERVENTION PLAN (BIP)  
HEALTH SCREENINGS  
HIPAA  
HIV/AIDS  
HOME INSTRUCTION  
IMMUNIZATIONS  
INCIDENT REPORTS, BITING INCIDENTS, WORKER’S COMPENSATION  
JOB DESCRIPTIONS  
KINDERGARTEN REGISTRATION / INTAKE PROCEDURES  
LICE  
MEDICAID  
MEDICAL TRANSPORTATION  
MEDICATION ADMINISTRATION IN SCHOOL  
MOBILITY AIDES  
NEWSLETTER ARTICLES  
NURSING STUDENTS  
NYS ED GUIDELINES  
NY STATEWIDE SCHOOL HEALTH SERVICES CENTER  
ORIENTATION  
OSHA BLOODBORNE PATHOGENS STANDARD EXPOSURE CONTROL PLAN AND PROCEDURES  
OXYGEN TANKS  
PERSONNEL PROCEDURES  
PHYSICAL EDUCATION  
PHYSICAL EXAMINATIONS/MEDICAL CLEARANCE FOR INTERSCHOLASTIC SPORTS  
PROFESSIONAL LICENSES  
PUBERTY EDUCATION  
REFERRALS  
RESIDENCY FORMS  
SEIZURES/SEIZURE DISORDERS  
SOURCES OF HEALTH CARE  
SPECIAL EDUCATION / CSE /§504 PROCEDURES  
STANDING ORDERS - STANDING MEDICATION ORDERS  
TECHNOLOGY, IEP DIRECT, ESCHOOL, ECHALK, ED DATA  
TRIPS  
WORK PLAN – SAMPLE HEALTH OFFICE YEARLY WORK PLAN

**Procedures for Administration of Medication in School and Nursing Procedures and  
Tasks Performed in School**

Introduction

Requirements for Administration of Medication in School

Requirements for Nursing Procedure Tasks in School

Storage of Medication

Change/Discontinuation/Addition of Medications

Documentation of Medication Administration

Medication Error

Self-Administration of Medication

Self-Directed Medication Under Supervision

Controlled Substances

Disposal of Medication

Emergency Medication/Non-Patient Specific Medication Orders

Non-FDA Sanctioned Requests, Herbal Remedies, Dietary Supplements and Natural Products

Emergency Building Evacuation and Medication

School Trips

Record Retention

Attachments:

CSD Documents:

Board of Education Policy 5500-Medication Administration

Superintendent's regulation 550-Medication Administration/Nursing Procedures

Authorization for Administration of Medication in School (form H42A)

Self-Medication Release (form H42B)

Physical Examination Report (form H1)

Standing Medication List

NYSED Documents:

Administration of Medication in the School Setting (April 2002)

Provision of Nursing Tasks (along with FAQ) (March 1995)

Non-patient Specific Orders (February 2001)

Medication Disposal Recommendations (October 2008)

New Policy for Stocking Albuterol Metered Doses Inhalers (MDIs)

**Written and Online:**

Guidelines for Use of the First Aid Manual  
How to Call 911 – “Active the EMS System”  
School Health Offices  
Principles of First Aid  
Abdominal Pain  
Abrasions, Cuts & Scratches  
Amputations of Fingers, Toes or Parts of Limbs  
Anaphylactic Shock – Severe allergic reaction  
Asthma  
Automobile Accidents  
Bee Sting  
Bleeding (Internal)  
Bleeding (Severe)  
Blisters  
Bruises or Contusions  
Burns  
Chest Injuries  
Open Chest Injuries  
Closed Chest Injuries  
Choking  
Common Cold  
Concussion in Young Athletes  
Conjunctivitis  
Dental Emergencies  
Diabetes  
Dislocated Joints  
Drug Intoxication  
Earache  
Electric Shock  
Epilepsy and Seizure Disorders  
Eye Injuries  
Fainting  
Fractures  
Headache  
Head Injury  
Heart Attack  
Heat Exhaustion  
Heat Stroke  
Impaled Object  
Insect Bites  
Menstrual Cramps (Dysmenorrhea)  
Mouth Injuries  
Nausea and Vomiting  
Nosebleed

Poisoning  
Poison Ivy, Oak and Sumac  
Shock  
Spinal Injuries  
Splinters  
Sprains & Strains  
Suicide  
Tick Removal  
Transporting the Injured Victim  
Unconsciousness  
Appendix- Good Samaritan Law

**Online Version Only:**

AED  
Alcohol Intoxication  
MRSA  
Substance Abuse  
Vomiting

**Emergency “To Go” Bags Checklist**

<b>Item</b>	<b>Required Quantity</b>	<b>Quantity on Hand</b>
Abdominal Surgical Pads	3	
Adhesive Bandage Strips – Assorted Sizes	1 box	
Albuterol Metered Dose Inhaler	1	
Alcohol Pads	12	
Antiseptic Wipes	12	
Ammonia Inhalant Ampules	4	
Bacitracin Ointment	12	
Bandage Scissors	1	
Blanket (Silver, Emergency)	1	
Cake Mate Gel	1	
Cloth Tape, 1”	1 roll	
Cold Packs (Instant, Disposable)	2	
Confidential List	1	
Conforming Stretch Gauze, 2”	3 rolls	
Drapes, 2-ply	2	
Drinking Cups, Plastic	6	
Elastic Bandage Rolls, 3”	2	
Emergency Cards		
Emesis Basin	1	
EpiPen	1	
EpiPen, Jr.	1 – Elementary Only	
Eye Pads	2	
Face Mask	2	
Face Shield	2	
First Aid Manual	1	
Forms (Daily Log, Incident Report, Epinephrine Administration)	2 of each	
Gauze Pads, 3”x3”	12	
Gloves, Vinyl, Latex-free, Disposable	6 pairs / 12 each	
Ocular Irrigation Solution	1	
Pen	1	
Pencil	1	
Penlight	2	
Red Hazardous Waste Bags	2	
Safety Goggles	1	
Saline Solution, 250 ml.	1	
SAM Splint	1	
Slings	Elementary – 1 Small, 1 Medium	
Slings	Secondary – 1 Medium, 1 Large	
Steri-Strips, 1/4”	2 packages	
Stethoscope, Latex-free	1	
Tongue Depressors	6	
Tooth Saver	1	
Tourniquets, Latex-free	2	
Tweezers	1	
Water	1 bottle	
Whistle on Lanyard	1	
Yearbook(s)	1	

**HEALTH SERVICES DEPARTMENT**

**OBTAINING ASSISTANCE DURING AN EMERGENCY**

**HOW TO CALL 911 – “ACTIVATE THE EMS SYSTEM”**

[For Cardiac emergencies, a trained staff member should remove the closest AED from the cabinet, and bring it to the side of the victim.]

1. From Public School telephones: **Dial 9 – 911**  
From cell phones: **Dial 911**
2. When speaking with the EMS operator:
  - a. Identify yourself, state the name of your school.
  - b. Calmly state the problem, general age, and gender of the victim.
  - c. If there is more than one victim, give an estimated number.
  - d. Give the school address and location(s) within the school of victim(s) and your telephone number.
3. If one or more of the victims is unconscious, not breathing, or bleeding profusely, state that you have a life-threatening situation and need EMS URGENTLY.

**DO NOT HANG UP** until the operator has repeated your location to you and told you that EMS has been dispatched.

4. A responsible person should remain at this telephone, in the event that the EMS operator needs to call back or EMS arrives and needs assistance finding the victim(s).
5. If possible and it is safe to do so, send a staff member to the door to let EMS in and bring the EMS rescuers to the site of the emergency.
6. Alert the Main Office/Principal and Health Office when 911/EMS has been called. Once the situation is under control, call the Health Services Office at 576-4264 to alert the Medical Director of the emergency.

*AWH/mmi*



**HEALTH SERVICES DEPARTMENT**

**AED (ADVANCED EXTERNAL DEFIBRILLATOR)**

An AED is a portable electronic device that can detect a life threatening heart rhythm and attempt to correct them. They are designed for easy use so a layperson can use them.

**\*\* Always call 911 and tell the EMS operator you have a “Cardiac emergency.” \*\*  
From a school telephone, dial 9-911. From a cell phone, dial 911.**

**Never leave the patient** – one person remain with the victim; another person goes for help.

**All schools have at least one AED.**

- AED locations are posted at entrances to the school buildings.
- AED locations are listed in each School Building Safety Plan.

**Staff trained in CPR/AED** include School Nurses, P.E. Teachers, Coaches, and select Custodians.

- Trained staff are listed in each School Building Safety Plan.

**Use of AED:**

- When the AED case opens, it alarms so that other staff members are alerted to go to the scene of the emergency.
- The staff member who finds the victim should send someone to the Health Office and/or the Gym to get one of the Nurses or P.E. teachers, or, after school hours, a Custodian.
- Anyone else who arrives at the scene and is certified in CPR/AED (i.e., a visitor to the building who is an EMT or other health care provider) may also utilize the AED.
- When turned on or opened, **the machine will instruct the user on what to do.** Follow the voice prompts.
- All supplies needed are stored within the AED case.

# Draft of City of New Rochelle School District Safety Plan | 2013

New Rochelle School District  
Health Services Department

2012-2013  
Adrienne Weiss-Harrison, M.D.  
Barbara Ehrenreich, CPNP

914-576-4264  
632-3371 Fax

<b><u>PUBLIC SCHOOLS</u></b>	<b><u>NURSES</u></b>	<b><u>E-MAIL</u></b>	<b><u>HEALTH OFFICE</u></b>	<b><u>FAX</u></b>
			<b><u>914/576-</u></b>	<b><u>914/576-</u></b>
Barnard	Summa, Anna	<a href="mailto:asumma@nred.org">asumma@nred.org</a>	4391	4625
	Marino, Nina	<a href="mailto:nmarino@nred.org">nmarino@nred.org</a>	8058	
Columbus	Petrescu, Liora	<a href="mailto:lpetrescu@nred.org">lpetrescu@nred.org</a>	4410	8291
	Lockwood, Ginny	<a href="mailto:vlockwood@nred.org">vlockwood@nred.org</a>	4410	
Davis	Pritz, Nancy	<a href="mailto:npritz@nred.org">npritz@nred.org</a>	4422	4225
	Seltzer, Andrea		4422	
Jefferson	Archer, Susan	<a href="mailto:sarcher@nred.org">sarcher@nred.org</a>	4429	4631
	Yacker, Rhonda			
Trinity	DeGeorge, Sharon	<a href="mailto:sdegeorge@nred.org">sdegeorge@nred.org</a>	4663/4671	4266
	Klion-Wolloch, Nora	<a href="mailto:nwolloch@nred.org">nwolloch@nred.org</a>	4663/4671	
Ward	Murphy, Margaret	<a href="mailto:mmurphy1@nred.org">mmurphy1@nred.org</a>	4453	4263
	Murphy, Karla	<a href="mailto:kmurphy@nred.org">kmurphy@nred.org</a>	4453	
Webster	Kaphan, Robin	<a href="mailto:rkaphan@nred.org">rkaphan@nred.org</a>	8411	4479
	Mellusi, Janet	<a href="mailto:jmellusi@nred.org">jmellusi@nred.org</a>	8411	
ALMS	Fricke, Alison	<a href="mailto:africke@nred.org">africke@nred.org</a>	4331	4784
	Martin, Maureen	<a href="mailto:mmartin@nred.org">mmartin@nred.org</a>	4331	
IEYMS	Lawrence, Kate	<a href="mailto:klawrence@nred.org">klawrence@nred.org</a>	4368	633-3962
	Schepp, Elise	<a href="mailto:eschepp@nred.org">eschepp@nred.org</a>	4369	
NRHS	Cowan, MaryEllen	<a href="mailto:mcowan@nred.org">mcowan@nred.org</a>	4575	632-4232
	Freeman, Tara	<a href="mailto:tfreeman@nred.org">tfreeman@nred.org</a>	4575	
	Vetrano, Diane	<a href="mailto:dvetrano@nred.org">dvetrano@nred.org</a>	4292	
Campus	Mellusi, Janet	<a href="mailto:jmellusi@nred.org">jmellusi@nred.org</a>	4397/4393	4647

<b>CPR/AED Trained Staff</b>						
<b>Building</b>	<b>Employee Location in Bldg.</b>	<b>Last Name</b>	<b>First Name</b>	<b>School Years Trained</b>	<b>Renewal Year</b>	<b>Date of Training</b>
Administration	Custodian	Burford	Derrick	1213	2014	10/16/12
Administration	Health Office	Ehrenreich	Barbara	1213	2014	10/17/12
Administration	Health Office	Weiss-Harrison	Adrienne	1213	2014	10/17/12
ALMS	Assist. Custodian	DiBuono	Dennis	1213	2014	11/28/12
ALMS	Health Office	Fricke	Alison	1213	2014	10/17/12
ALMS	Health Office	Yacker	Rhonda	1213	2014	10/17/12
ALMS	Phys Ed	Binenbaum	Corey	1213	2014	10/10/12
ALMS	Phys Ed	DeLuke	Anthony	1213	2014	10/10/12
ALMS	Phys Ed	Giordano	Brenda	1213	2014	11/28/12
ALMS	Phys Ed	Violante	Brian	1213	2014	10/10/12
ALMS	Phys Ed	Washington	Theo	1213	2014	10/10/12
ALMS	Plant Supervisor	Umbro	Michael	1213	2014	10/15/12
Barnard	Assistant Custodian	Johnson	Quniten	1213	2014	10/16/12
Barnard	Custodian	Tozzo	Michael	1213	2014	11/28/12
Barnard	Health Office	Marino	Nina	1213	2014	10/17/12
Barnard	Health Office	Summa	Anna	1213	2014	10/17/12
Barnard	Phys Ed	Cohen	Marc	1213	2014	10/10/12
BOCES	Health Office	Trozzi	Kim	1213	2014	10/10/12
Campus	Custodian	Mills	David	1213	2014	11/28/12
Campus	Health Office	Mellusi	Janet	1213	2014	10/17/12
Campus	Phys Ed	Tassello	Richard	1213	2014	10/10/12
Columbus	Assistant Custodian	Summa	Paul	1213	2014	10/16/12
Columbus	Custodian	Mills	George	1213	2014	10/15/12
Columbus	Health Office	Lockwood	Virginia	1213	2014	10/17/12
Columbus	Health Office	Ortiz-Petrescu	Liora	1213	2014	10/17/12
Columbus	Phys Ed	Brown	Natalia	1213	2014	10/10/12
Columbus	Phys Ed	Schnaufer	James	1213	2014	10/10/12
Davis	Assist. Custodian	Annunziata	Andrew	1213	2014	10/16/12
Davis	Custodian	Sinkfield	Tony	1213	2014	10/15/12
Davis	Health Office	Pritz	Nancy	1213	2014	10/17/12
Davis	Health Office	Seltzer	Andrea	1213	2014	10/16/12
Davis	Phys Ed	Chapman	Mary	1213	2014	10/10/12
Davis	Phys Ed	Williams	Paul	1213	2014	10/10/12
IEYMS	Custodian	Groves	Charles	1213	2014	11/28/12
IEYMS	Health Office	Lawrence	Kate	1213	2014	

# Draft of City of New Rochelle School District Safety Plan | 2013

10/17/12						
<b>CPR/AED Trained Staff</b>						
Building	Employee Location in Bldg.	Last Name	First Name	School Years Trained	Renewal Year	Date of Training
IEYMS	Phys Ed	Costa	Tony	1213	2014	11/28/12
IEYMS	Phys Ed	Howell-Benitez	Annie	1213	2014	10/10/12
IEYMS	Phys Ed	Logan	Rhonda	1213	2014	10/10/12
IEYMS	Phys Ed	Monaco	Valerie	1213	2014	10/15/12
IEYMS	Phys Ed	Rodrigues	Anthony	1213	2014	10/15/12
IEYMS	Phys Ed	Washington	Garrett	1213	2014	10/15/12
IEYMS	Plant Supervisor	Coleman	William	1213	2014	11/28/12
Jefferson	Assistant Custodian	Christensen	Dean	1213	2014	11/28/12
Jefferson	Custodian	Bruno	Richard	1213	2014	10/15/12
Jefferson	Health Office	Archer	Susan	1213	2014	10/17/12
Jefferson	Health Office	Civita	Fran	1213	2014	10/16/12
Jefferson	Phys. Ed.	Murphy	John William	1213	2014	9/10/12
Jefferson	Phys. Ed.	Ortiz	Edward	1213	2014	10/10/12
NRHS	Assistant Custodian	Benge	Jim	1213	2014	11/28/12
NRHS	Custodian	LePore	Doug	1213	2014	11/28/12
NRHS	Health Office	Cowan	Mary Ellen	1213	2014	10/17/12
NRHS	Health Office	Vetrano	Diane	1213	2014	10/17/12
NRHS	Health Office	Freeman	Tara	1213	2014	10/17/12
NRHS	HVACC	Mergliano	Frank	1213	2014	11/28/12
NRHS	Phys Ed	Anderson	Dianna	1213	2013	
NRHS	Phys Ed	Carboni	Carol	1213	2014	10/10/12
NRHS	Phys Ed	Ciamei	Mary	1213	2014	10/10/12
NRHS	Phys Ed	DiRienzo	Louis	1213	2014	10/15/12
NRHS	Phys Ed	Fuller	Timothy	1213	2014	10/15/12
NRHS	Phys Ed	Guccione	James	1213	2014	10/16/12
NRHS	Phys Ed	Luciana	Kevin	1213	2014	10/10/12
NRHS	Phys Ed	Lynn	Lisbeth	1213	2014	10/16/12
NRHS	Phys Ed	Rhett	Raymond	1213	2014	10/15/12
NRHS	Phys Ed	Valez	Ryan	1213	2012	10/15/12
NRHS	Phys Ed	Williams	Joseph	1213	2013	08/08/11
NRHS	Plant Supervisor	Carew	Michael	1213	2014	11/28/12
Trinity	Assist. Custodian	Spady	Steve	1213	2014	11/28/12
Trinity	Health Office	Klion-Wolloch	Nora	1213	2014	10/17/12
Trinity	Phys Ed	Chambers	Gordon	1213	2014	06/21/12

CPR/AED Trained Staff						
Building	Employee Location in Bldg.	Last Name	First Name	School Years Trained	Renewal Year	Date of Training
Ward	Assit. Custodian	Freiman	Martin	1213	2014	10/16/12
Ward	Custodian	Bonacci	William	1213	2014	10/15/12
Ward	Health Office	Murphy	Margaret	1213	2014	10/17/12
Ward	Health Office	Murphy	Karla	1213	2014	10/17/12
Ward	Phys Ed	Apoldo	James	1213	2014	10/10/12
Ward	Phys Ed	Oliveira	Armando	1213	2014	10/10/12
Ward	Phys Ed	Sgobbo	Michael	1213	2013	06/09/11
Webster	Assistant Custodian	Dixon	Todd	1213	2014	10/16/12
Webster	Custodian	Freiman	Virginia	1213	2014	10/15/12
Webster	Health Office	Kaphan	Robin	1213	2014	10/17/12
Webster	Phys Ed	Collins	William	1213	2013	02/10/11

**Appendix 4-Pupil Services Resources**

The **Crisis Intervention Manual** was revised in 2010 by members of the School Psychology and School Social Work staff of the Department of Pupil Services to serve as a guide for school administrators and personnel who are responsible for direct and indirect provision of supports and services in times of crisis. This manual provides important resource information related to various crises and the appropriate responses our schools provide in such instances. Each school has been provided with copies of this manual.

Remember – there are different kinds of crises. Not all require mobilization of entire teams, and not all affect entire school buildings.

The chapters outlined in the Table of Contents below provide a ready reference for specific types of crises and appropriate interventions. Materials have been developed, adapted or “adopted” by the team. Much has been gathered over time from a variety of professional sources and represents current best practices in crisis intervention. With overlap in some categories, staff should select appropriate materials in a given situation.

**CITY SCHOOL DISTRICT OF NEW ROCHELLE**  
**CRISIS INTERVENTION MANUAL**  
**A RESOURCE GUIDE TO CRISIS INTERVENTION IN THE SCHOOLS**  
***TABLE OF CONTENTS***

**INTRODUCTION**

**SECTION I – Checklist/Team List**

**SECTION II – Sample Letters**

**SECTION III – Reactions to Crisis/Coping Skills**

**SECTION IV – Classroom Activities and Resources**

**SECTION V – Resources for Parents**

**SECTION VI – Suicide**

**SECTION VII – Follow Up Materials**

**SECTION VIII – Natural Disasters**

**SECTION VIV – Referrals**

**SECTION X – Interview Questions**

**SECTION XI – Bibliographies**

**Department of Pupil Services  
School Social Worker's Schedule  
2012-2013**

Revised  
9/13/2012

	<i>Monday</i>	<i>Tuesday</i>	<i>Wednesday</i>	<i>Thursday</i>	<i>Friday</i>
<b>Lianne Archer</b> WARD #4450 BARNARD #4386	<b>WARD</b> 8023	<b>BARNARD</b> 4385	<b>BARNARD</b> 4385	<b>WARD</b> 8023	<b>WARD</b> 8023
<b>Julienne Berry</b> MAIN #4430	<b>JEFF</b> 4433	<b>JEFF</b> 4433	<b>JEFF</b> 4433	<b>JEFF</b> 4433	<b>JEFF</b> 4433
<b>Dick Boddie - 1/2 time</b> MAIN #4280	<b>ADMIN</b> 4261	<b>ADMIN</b> 4261	<b>ADMIN</b> 4261	<b>ADMIN</b> 4261	<b>ADMIN</b> 4261
<b>Heather Cayanan</b> MAIN #4420	<b>DAVIS</b> 4416	<b>DAVIS</b> 4416	<b>DAVIS</b> 4416	<b>DAVIS</b> 4416	<b>DAVIS</b> 4416
<b>Michael Chianelli</b> MAIN WEB#4460 COL#4401	<b>WEBS</b> 4467	<b>Col/AM-Web/PM</b> 4407/4467	<b>Col/AM-Web/PM</b> 4407/4467	<b>Col/AM-Web/PM</b> 4407/4467	<b>WEBS</b> 4467
<b>Caryn Da'Loia</b> MAIN #4401	<b>COLUM</b> 4407	<b>COLUM</b> 4407	<b>COLUM</b> 4407	<b>COLUM</b> 4407	<b>COLUM</b> 4407
<b>Carmen Diaz</b> MAIN #4339	<b>ALMS</b> 8086	<b>ALMS</b> 8086	<b>ALMS</b> 8086	<b>ALMS</b> 8086	<b>ALMS</b> 8086
<b>Nelsie Febles</b> MAIN #4440	<b>TRINITY</b> 4226	<b>TRINITY</b> 4226	<b>TRINITY</b> 4226	<b>TRINITY</b> 4226	<b>TRINITY</b> 4226
<b>Almarie Fridovich</b> MAIN #4339	<b>ALMS</b> 4310	<b>ALMS</b> 4310	<b>ALMS</b> 4310	<b>ALMS</b> 4310	<b>ALMS</b> 4310
<b>Joanne Goldman</b> MAIN #4280	<b>ADMIN</b> 4256	<b>ADMIN</b> 4256	<b>ADMIN</b> 4256	<b>ADMIN</b> 4256	<b>ADMIN</b> 4256
<b>Angelica Guel</b> MAIN#4360	<b>IEYMS</b> 4346	<b>IEYMS</b> 4346	<b>IEYMS</b> 4346	<b>IEYMS</b> 4346	<b>IEYMS</b> 4346
<b>Charise Littlejohn</b> MAIN #4360	<b>IEYMS</b> 4377	<b>IEYMS</b> 4377	<b>IEYMS</b> 4377	<b>IEYMS</b> 4377	<b>IEYMS</b> 4377
<b>Jeanette Martinez</b> MAIN #4280	<b>ADMIN/CREATE</b> 4682	<b>ADMIN/CREATE</b> 4682	<b>ADMIN/CREATE</b> 4682	<b>ADMIN/CREATE</b> 4682	<b>ADMIN</b> 4682
<b>Maria Morris</b> MAIN #4500/HOUSE 2 #4525	<b>NRHS</b> 3071	<b>NRHS</b> 3071	<b>NRHS</b> 3071	<b>NRHS</b> 3071	<b>NRHS</b> 3071
<b>Gail Polsky</b> MAIN#4500/HOUSE 4 #5093	<b>NRHS</b> 5427	<b>NRHS</b> 5427	<b>NRHS</b> 5427	<b>NRHS</b> 5427	<b>NRHS</b> 5427
<b>Grisella Ramos-Santiago</b> MAIN#4500/HOUSE 3 #4530	<b>NRHS</b> 4287	<b>NRHS</b> 4287	<b>NRHS</b> 4287	<b>NRHS</b> 4287	<b>NRHS</b> 4287
<b>Victoria Rashbaum</b> MAIN #4386	<b>BARN</b> 4394	<b>BARN</b> 4394	<b>BARN</b> 4394	<b>BARN</b> 4394	<b>BARN</b> 4394
<b>Janet Rodriguez</b> MAIN #4500/HOUSE 1 #4516	<b>NRHS</b> 4512	<b>NRHS</b> 4512	<b>NRHS</b> 4512	<b>NRHS</b> 4512	<b>NRHS</b> 4512
<b>Judy Shulman</b> MAIN #4450	<b>WARD</b> 4478	<b>WARD</b> 4478	<b>WARD</b> 4478	<b>WARD</b> 4478	<b>WARD</b> 4478

<p><b>Rhonda G. Jones, Ph.D., DIRECTOR OF PUPIL SERVICES Ext. 4274/4275</b>  <b>Judy Amato, Sr. Typist - Social Work Ext. 4280 FAX# 576-4295</b></p>
--

**Department of Pupil Services Psychologist  
Schedule 2012-2013**

	<u>Monday</u>	<u>Tuesday</u>	<u>Wednesday</u>	<u>Thursday</u>	<u>Friday</u>
<b>Evelyn Aponte, Psy.D.</b> MAIN # 4500/5093	NRHS 576-7468	NRHS 576-7468	NRHS 576-7468	NRHS 576-7468	NRHS 576-7468
<b>Frank Barile, Ph.D.</b> MAIN # 4276	Admin 4282	Admin 4282	Admin 4282	Admin 4282	Admin 4282
<b>Daniel Billups, Psy.D.</b> MAIN # 4276	Admin (CSE) 4277	Admin (CSE) 4277	Admin (CSE) 4277	Admin (CSE) 4277	Admin (CSE) 4277
<b>Merryl Bushansky, Psy.D.</b> MAIN # 4420	DAVIS 4415	DAVIS 4415	DAVIS 4415	DAVIS 4415	DAVIS 4415
<b>Michael DeJesus</b> TRINITY #4440 IEY #4360	Trinity 5679	Trinity 5679	IEYMS 4360	IEYMS 4360	TRINITY/IEY 5679\4360
<b>Francine Fersko</b> MAIN # 4440	Trinity 4435	Trinity 4435	Trinity 4435	Trinity 4435	Trinity 4435
<b>Elana Gershon</b> MAIN # 4276		Admin 4276	Admin 4276		
<b>Deborah Gomez, Psy.D.</b> MAIN# 4500/4530	NRHS 4539	NRHS 4539	NRHS 4539	NRHS 4539	NRHS 4539
<b>Karen Gongora,</b> MAIN # 4339	ALMS 4311	ALMS 4311	ALMS 4311	ALMS 4311	ALMS 4311
<b>Alison Guiney</b> MAIN #4500/4520	NRHS 4499	NRHS 4499	NRHS 4499	NRHS 4499	NRHS 4499
<b>Melissa Kaye-Swift, Psy.D.</b> MAIN # 4450	WARD 4454	WARD 4454	WARD 4454	WARD 4454	WARD 4454
<b>Joshua Logan, Ph.D.</b> MAIN # 4500/4516	NRHS 8092	NRHS 8092	NRHS 8092	NRHS 8092	NRHS 8092
<b>Lynda Malgieri</b> MAIN #4339	ALMS 4311	ALMS 4311	ALMS 4311	ALMS 4311	ALMS 4311
<b>Francis McCarthy</b> MAIN #4500	NRHS 738-2308	NRHS 738-2308	NRHS 738-2308	NRHS 738-2308	NRHS 738-2308
<b>Eva Nicolosi, Psy.D.</b> MAIN # 4430	JEFFERSON 4428	JEFFERSON 4428	JEFFERSON 4428	JEFFERSON 4428	JEFFERSON 4428
<b>Linda Oliverio</b> MAIN # 4339	ALMS 4318	ALMS 4318	ALMS 4318	ALMS 4318	ALMS 4318
<b>Susan Owens-Billups, Psy. D.</b> MAIN #4360	IEYMS 4366	IEYMS 4366	IEYMS 4366	IEYMS 4366	IEYMS 4366
<b>Diana Planells-Bloom, Ph.D.</b> MAIN # 4386	BARNARD 4385	BARNARD 4385	BARNARD 4385	BARNARD 4385	BARNARD 4385
<b>Aida Salcedo-Kelly</b> MAIN#4390	BARNARD 4384	CPSE 4497	CPSE 4497	CPSE 4497	BARNARD 4384
<b>Sheryl Senna, Psy.D.</b> MAIN # 4450	WARD 4448	WARD 4448	WARD 4448	WARD 4448	WARD 4448
<b>Elizabeth Stanton, Psy.D.</b> MAIN # 4401	COLUMBUS 4408	COLUMBUS 4408	COLUMBUS 4408	COLUMBUS 4408	COLUMBUS 4408
<b>Karina Villalona-Martial</b> MAIN # 4360	IEYMS 4359	IEYMS 4359	IEYMS 4359	IEYMS 4359	IEYMS 4359
<b>Cean Villamena</b> MAIN # 4460	WEBSTER 4466	WEBSTER 4466	Admin 4276	WEBSTER 4466	WEBSTER 4466
<b>Sandra Zupicich, Ph.D.</b> MAIN #4393	CAMPUS 4393	CAMPUS 4393	CAMPUS 4393	CAMPUS 4393	Admin 4393