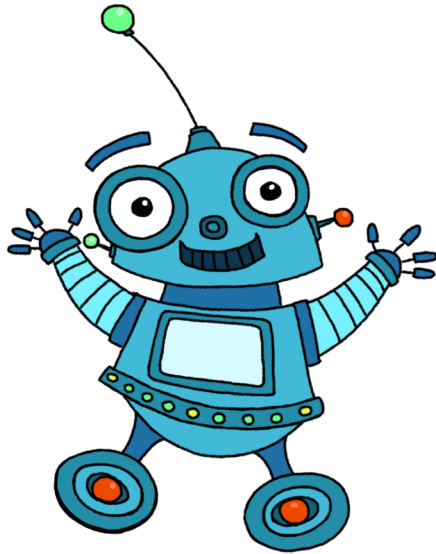


PASSPORT TO ENL: A MONTHLY NEWSLETTER

Imagine Learning Usage



The NYS Office of Bilingual Education and Foreign Language Studies lists a collection of principles to ensure all students, including ELLs, attain the highest level of language proficiency and language success. This document is entitled “The Blueprint for English Language Learners (ELLs) success.” The first principle states that **all teachers are teachers of ELLs and need to plan accordingly.**

In this month’s newsletter, we provide an Imagine Learning usage tracker.

Issue 19, October 2018

Newsstand



Imagine learning is back!

New site code: NYC

Weekly usage: 60 minutes

Coming soon: Imagine Learning access in the library!

Reminder: All classrooms that average 240+ minutes on Imagine Learning between September 9 and November 30 could win a \$50 PIZZA PARTY E- GIFT CARD!

Proficiency Levels of English Language Learners

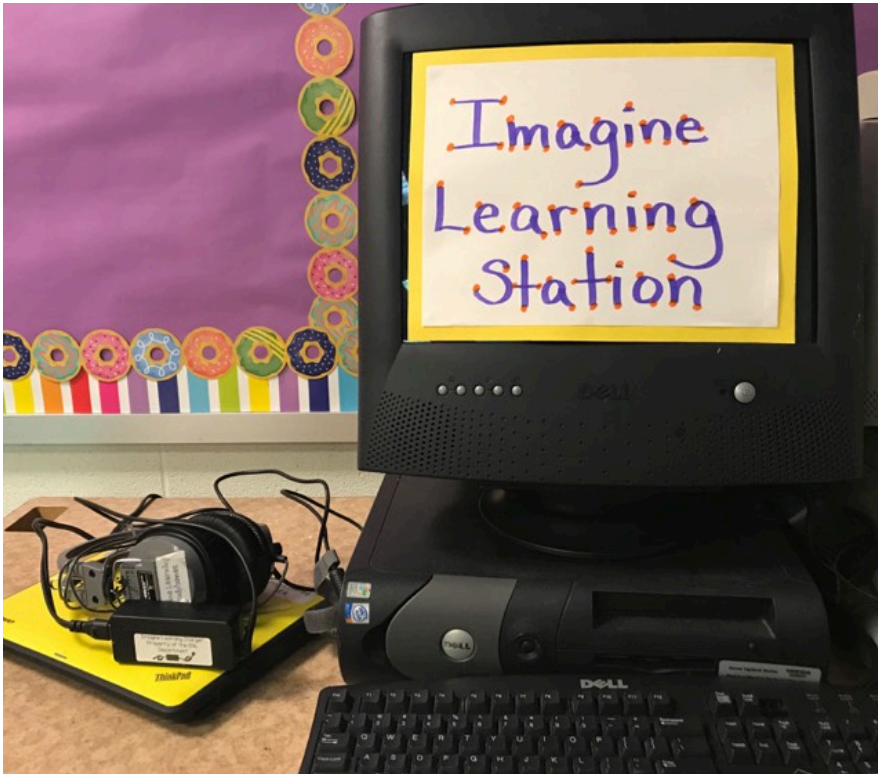
1. Entering

2. Emerging

3. Transitioning

4. Expanding

5. Commanding



Kudos to Ms. Mcgruder and Ms. Tsapelas for creating an Imagine Learning station in their classroom!

Imagine learning is back and we're off to a great start! This year's rollout was accomplished earlier than any other school year. Devices, login in cards, and home access information have all been distributed to classrooms with English language learners.

As in previous years, we will continue to strive for a weekly usage target of 60 minutes per student, which is

equivalent to three sessions on the program. To achieve this goal, we have created a usage tracker for students (see next page). This tracker can be posted near the Imagine Learning device(s), and students can be taught to monitor their own usage. After completing a session, students will simply locate their name on the tracker and place a check under the corresponding session. Students will continue to receive incentives for using the program.

Teachers are also encouraged to use the Teacher Resources section on my.imaginelearning.com to download lesson plans. Lesson plans are aligned to the Common Core State Standards. Moreover, they feature materials, differentiation strategies, and assessment tools. In addition to this, Imagine Learning allows teachers to replay instructional videos and download printouts of all texts featured on the program. If you would like to explore these features and need support, please feel free to reach out to the ENL teachers.

