



ROBERT TREAT ACADEMY CHARTER SCHOOL

2017-2018

County: CHARTERS
 District: ROBERT TREAT ACADEMY CS
 Principal: MS. ADUBATO
 443 CLIFTON AVENUE
 NEWARK, NJ 07104-1339
<http://www.roberttreatacademy.org>
 (973)482-8811

Total students: **673**

- Economically Disadvantaged: **72.1%**
- Students with Disabilities: **6.7%**
- English Learners: **0.7%**
- Grades offered: **KG-08**
- Student to Teacher Ratio: **15:1**
- Teacher Average Experience (years): **10.3**

School Highlights Reported by the District

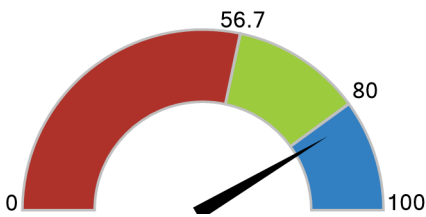
- In 2008 Robert Treat Academy was named a NCLB Blue Ribbon School of Distinction.
- Our High School Placement Program matches students with high schools that meet their academic and social needs. These schools include private day, boarding, parochial, vocational and public schools.
- For the past 15 years our 6th and 7th grade students have attended a week long sailing school in Belmar, NJ.

How did students perform on assessments?

Students that met or exceeded expectations on statewide assessments

English Language Arts

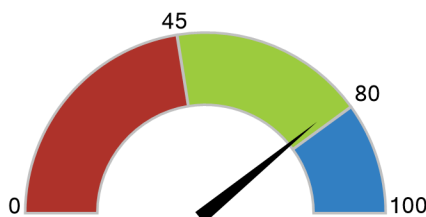
83%



Below State: 0 - 56.6%
 Met State: 56.7 - 79.9%
 Met Goal: 80 - 100%

Math

78.2%

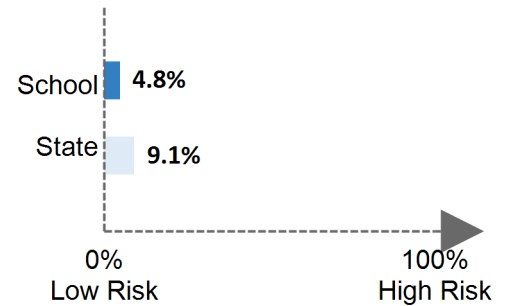


Below State: 0 - 44.9%
 Met State: 45 - 79.9%
 Met Goal: 80 - 100%

Are students at risk?

Students that were absent for 10% or more of days enrolled

Chronic Absenteeism



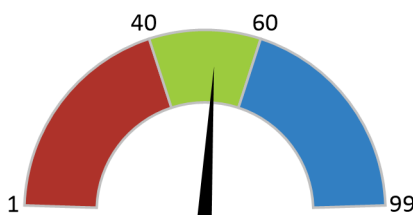
How does student growth compare to other students?

Median Student Growth Percentile

Each student gets a **student growth percentile** from 1 to 99 for English (4th to 8th grade) and Math (4th to 7th grade) that explains their progress compared to students who had similar test scores in the past. If the student growth percentiles for all students in the school are ordered from smallest to largest, the **median student growth percentile** is the percentile in the middle of that list.

English Language Arts

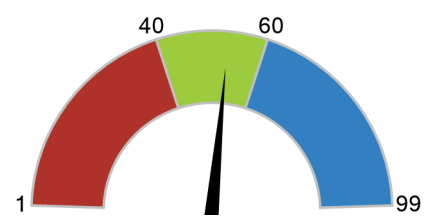
52



Below Standard: 1 - 39.5
 Met Standard: 40 - 59.5
 Exceeds Standard: 60 - 99

Math

53



Below Standard: 1 - 39.5
 Met Standard: 40 - 59.5
 Exceeds Standard: 60 - 99

How to use this report?

- Learn More about this school by viewing the [detailed report](#).
- Start Conversations with school community members and ask questions.
- Engage with your school communities to identify where schools are doing well and where they can improve.