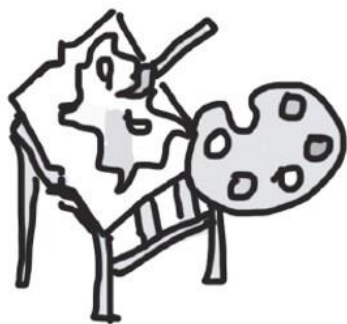


Welcome to

Middle School Admissions

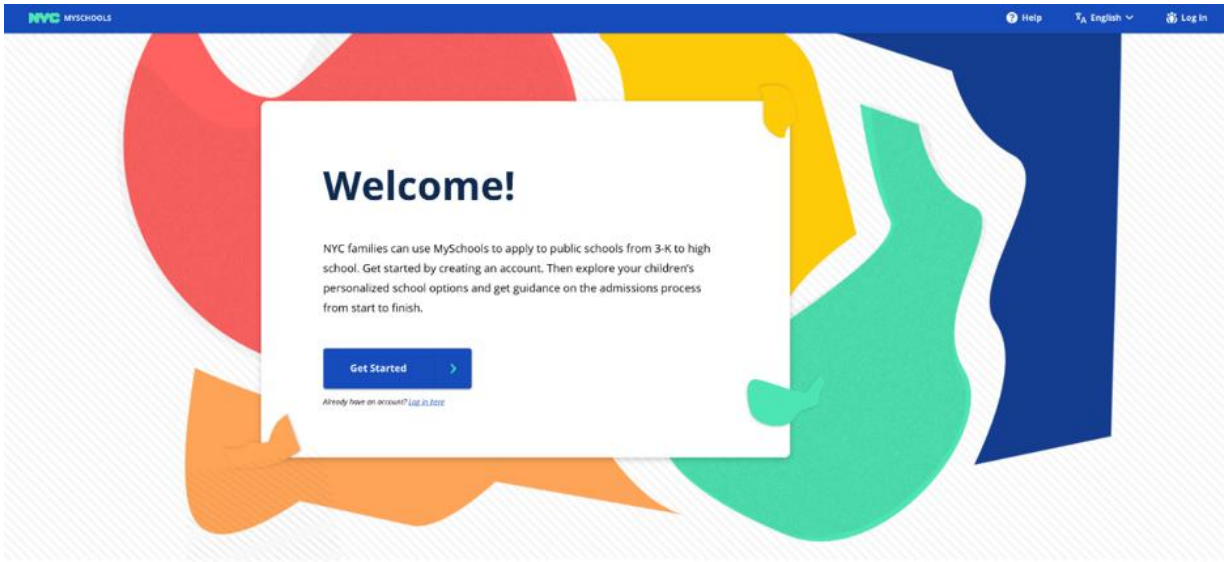


How do you apply?

- October
 - Access your child's personalized middle school application in MySchools*
 - MySchools is both an online directory and your child's personalized application. It will include as options every middle school that your child is eligible to attend
- December 3
 - Add up to 12 programs to the application and place them in your true order of preference
- April
 - 1 offer

How do you apply? (continued)

- This fall, parents can complete their child's middle school application online at **myschools.nyc**.



- Parents create an account with their personal email addresses.
- To add a student to their account, they will need:
 - Student ID (OSIS)
 - Account Creation Code (invitation letters mailed home; also can be received at current school)

The online application will be mobile device friendly, and available in the nine languages* translated by the NYCDOE (Arabic, Bengali, Chinese, French, Haitian Creole, Korean, Russian, Spanish and Urdu)

Access and review your child's application

When you access the application, **be sure to review all information about your child:**

- ✓ Make sure all personal information, including your child's address, is correct.
- ✓ Make sure your child's academic record is accurate.

Need help?

- Talk to your school counselor
- Visit a Family Welcome Center
- Call us at **718-935-2009**

If you see anything on your application that is inaccurate, contact your child's current elementary school as soon as possible.

What schools can I apply to?

When you log into MySchools, you will have a personalized list of schools to choose from. All the DOE public schools that your child can apply to will be included:

- Your Zoned School
 - Learn if you have a zoned middle school at schools.nyc.gov/Find-a-School
 - (Not all students have a zoned middle school)
- District Schools
 - Open to all students who live and/or attend public elementary school in the district.
 - If your child lives in one district and goes to school in another, they are eligible to apply to district schools in both districts.
- Boroughwide Schools
- Citywide Schools

Charter schools have a separate admissions process and are not part of the middle school application.

Choose schools for your child's application

Explore your middle school options in MySchools and add programs to your application. **How do you choose where to apply?** Consider the following:

- Travel
 - How will your child get from home to school each day?
 - How long is the commute?
 - Visiting the school is a good way to see what this trip is like!
- Programs and courses offered
 - Are there specific academic courses, clubs, activities, or sports that appeal to you and your child?
- School size
 - How many students go to the school?
- Mission and vision
 - What makes the school special?

How do students get middle school offers?

- **Choices on the Application**

- The programs you include in your child's application AND the order in which they are placed.

- **Admissions Priorities**

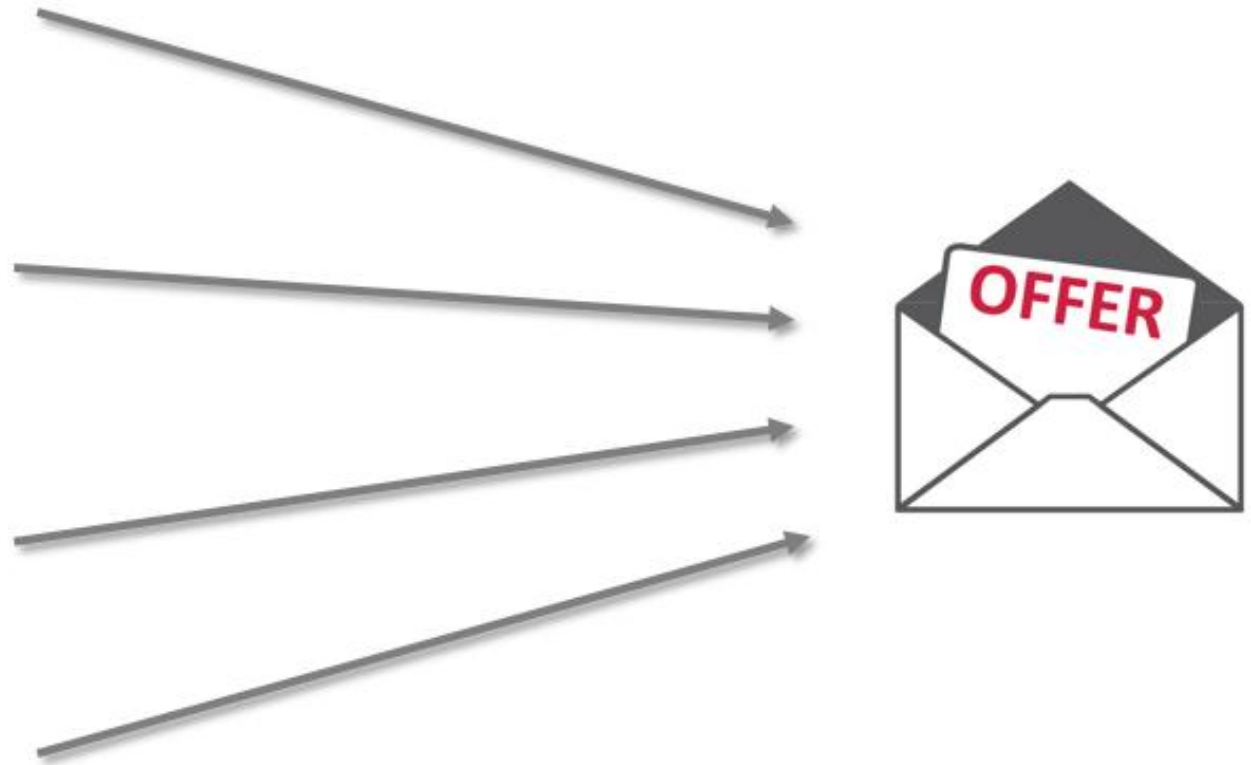
- The order in which groups of applicants are considered

- **Admissions Methods**

- How students are matched to seats.

- **Seat Availability**

- The number of seats available for applicants.



Complete your child's application

- Add up to 12 program choices to your child's application. If a school has multiple programs, you may apply to one program, or more than one program at that school.
- Be sure to place them into your true order of preference, with your favorite program as #1.
- Submit the application by **December 3, 2018.**
- TIP | After adding your favorite programs, consider adding more choices to your application.
- TIP | Rank programs you'd prefer to your zoned or continuing school ahead of your zoned or continuing school.
- Remember, if you do not get an offer to a program from your application, you will be matched to a program with availability in your district.

Admissions Priorities

At some schools, students are considered in groups. All students in the first priority group will be considered first. If seats are available, students in the second priority group will be considered next, and so on.

Admissions Priorities

1. Priority to students and residents of the District
2. Then to students and residents of Brooklyn

*This means that **All students who live or go to school in the District** that list this program on their application will be considered before **other Brooklyn students** who list this program on their application.*

Admissions Methods

An admissions method is the way a school program considers and matches with applicants. These admissions methods **do not** see any academic information:

- Zoned
 - Based on address
- Open
 - Random Selection
- Limited Unscreened
 - Random selection, but students will move into a higher priority group by signing in at a school event

TIP | If applying to a “Limited Unscreened” program, visit and sign in!

Admissions Methods (continued)

An admissions method is the way a school program considers and matches with applicants. These admissions methods do see academic information:


- Screened
 - School ranks students based on fourth-grade attendance, state tests, and grades. Additional requirements may exist
- Screened for Language
 - Based on students' English language skills
- Composite Score
 - Students are admitted based on a score that's calculated using fourth grade report cards, state ELA and math exams, attendance, and behavior

Selection Criteria

- Programs with **Screened**, **Screened: Language**, or **Composite Score** Admissions Methods use specific Selection Criteria to admit students.
- For most up-to-date information, please contact middle schools directly.

PROGRAMS OFFERED

(I.S. 123) Academic Honors Program Program Code: A123S

Admissions Method:  Screened

Program Eligibility: Open to students and residents of Brooklyn

| Prior Year Admissions | Applicants | Seats | Applicants Per Seat | Seats Filled |
|----------------------------|------------|-------|---------------------|--------------|
| General Education | 225 | 55 | 4 | Yes |
| Students with Disabilities | 75 | 18 | 4 | Yes |

Admissions Priorities: Priority to students and residents of the District Then to students and residents of Brooklyn. *Last year, this program admitted students from all priority groups.*

Selection Criteria: Academic and Personal Behaviors - Attendance - Final 4th Grade Report Card - Punctuality - 4th Grade New York State ELA and Math Exams

Key Dates

| | |
|---------------------|---|
| Fall | Attend open houses and middle school fairs Contact schools directly to learn when to visit. |
| Late October | Access the middle school application in MySchools |
| December 3 | Apply to middle school by December 3, 2018 |
| April | Get your child's middle school offer |
| May | Appeals Round – Only for seats that remain after the main round. |

Resources

Learn more

- 2019 NYC Middle School Directory
| schools.nyc.gov/Middle
- Middle school admissions email newsletter
| schools.nyc.gov/Connect
- Your zoned school
| schools.nyc.gov/Find-a-School

Get help with your application

- Your school counselor
- Visit a Family Welcome Center
| schools.nyc.gov/WelcomeCenters
- Office of Student Enrollment
| 718-935-2009